

Classic Coastal Collection





SUPREME MODULAR



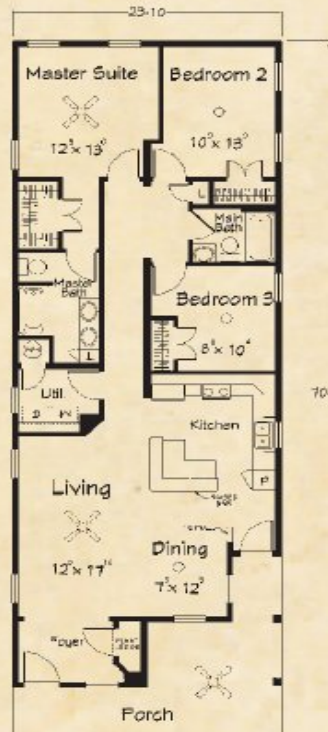
the Arabella Ranch

This charming cottage offers an open plan design that is gracious as well as spacious. The unique, front porch "seating square" is like having an additional outdoor room and is the perfect spot for visiting with family, friends and neighbors.

Arabella Ranch Plan A

1421 sq. ft. Living
246 sq. ft. Porch

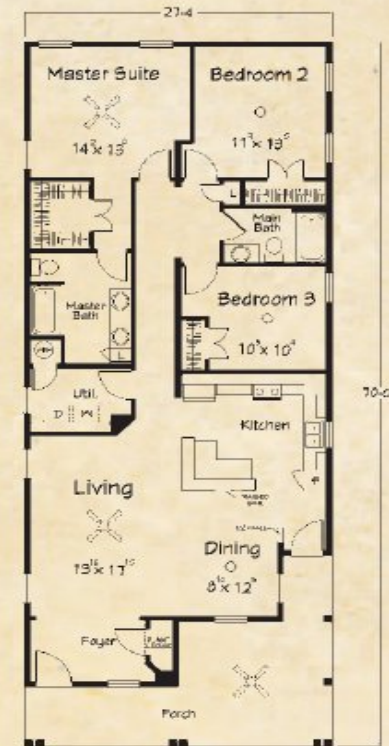
1667 Total



Arabella Ranch Plan B

1634 sq. ft. Living
278 sq. ft. Porch

1912 Total





SUPREME MODULAR



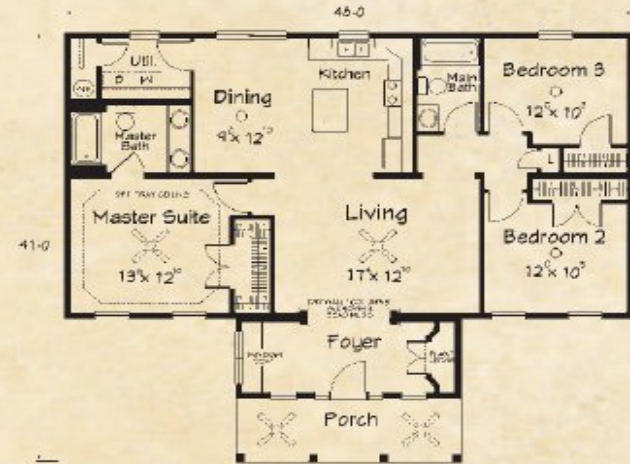
the Acadian Ranch

Classic lines and balance make the Acadian style home a timeless family favorite. The charming front porch greets all who approach your door. The elegant foyer with its classic window seat and entry columns will welcome you home.

Acadian Ranch Plan A

1457 sq. ft. Living
114 sq. ft. Porch

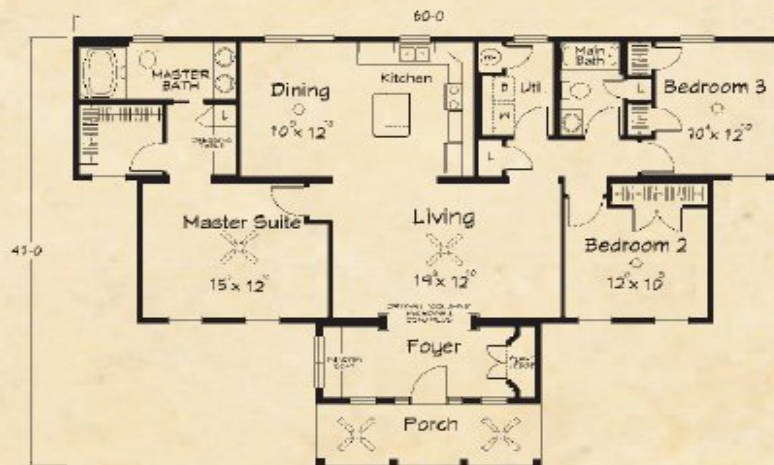
1571 Total



Acadian Ranch Plan B

1621 sq. ft. Living
114 sq. ft. Porch

1735 Total





SUPREME MODULAR



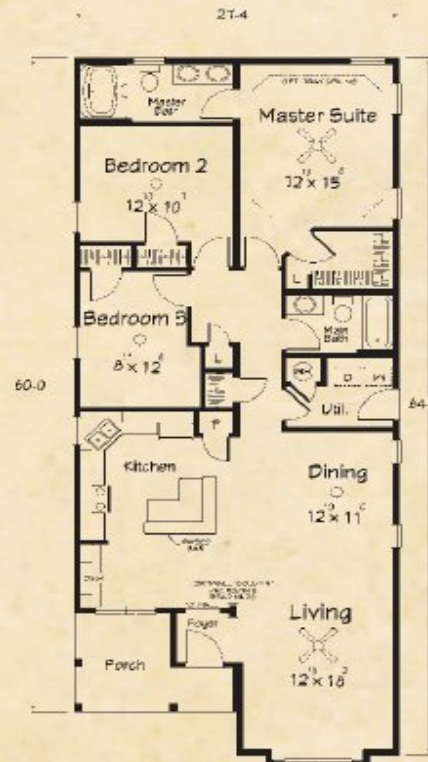
the Bayview Cottage

The traditional "shotgun" design meets the modern family's lifestyle. Large, combination-rooms provide connected open spaces for plenty of "together time" while the elegant master suite offers a welcome retreat.

Bayview Cottage Plan A

1609 sq. ft. Living
94 sq. ft. Porch

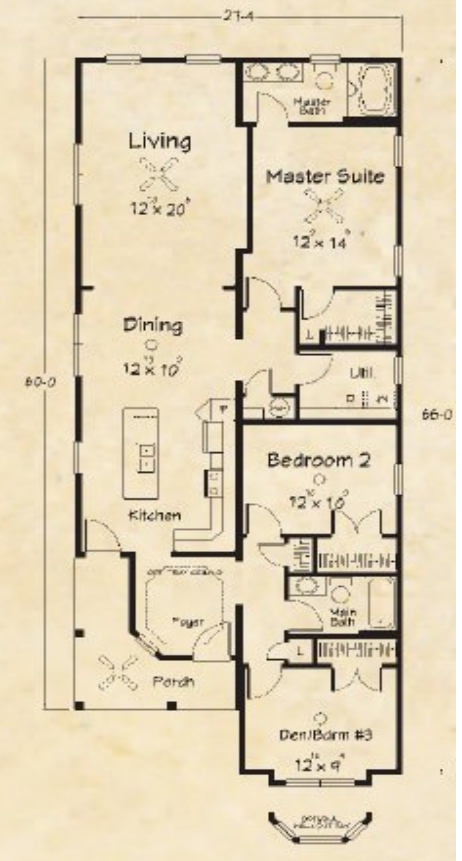
1703 Total



Bayview Cottage Plan B

1624 sq. ft. Living
106 sq. ft. Porch

1730 Total





SUPREME MODULAR



the Bonita Bungalow

The Bonita's unique three-tiered, front gable provides a special "ginger bread house" appeal with lots of opportunity for exterior design "expression". The covered front entry and "sitting" porch lead to an elegant foyer and grand entryway. An open and inviting central living area make this a great plan for relaxation and entertaining.

Bonita Bungalow Plan B

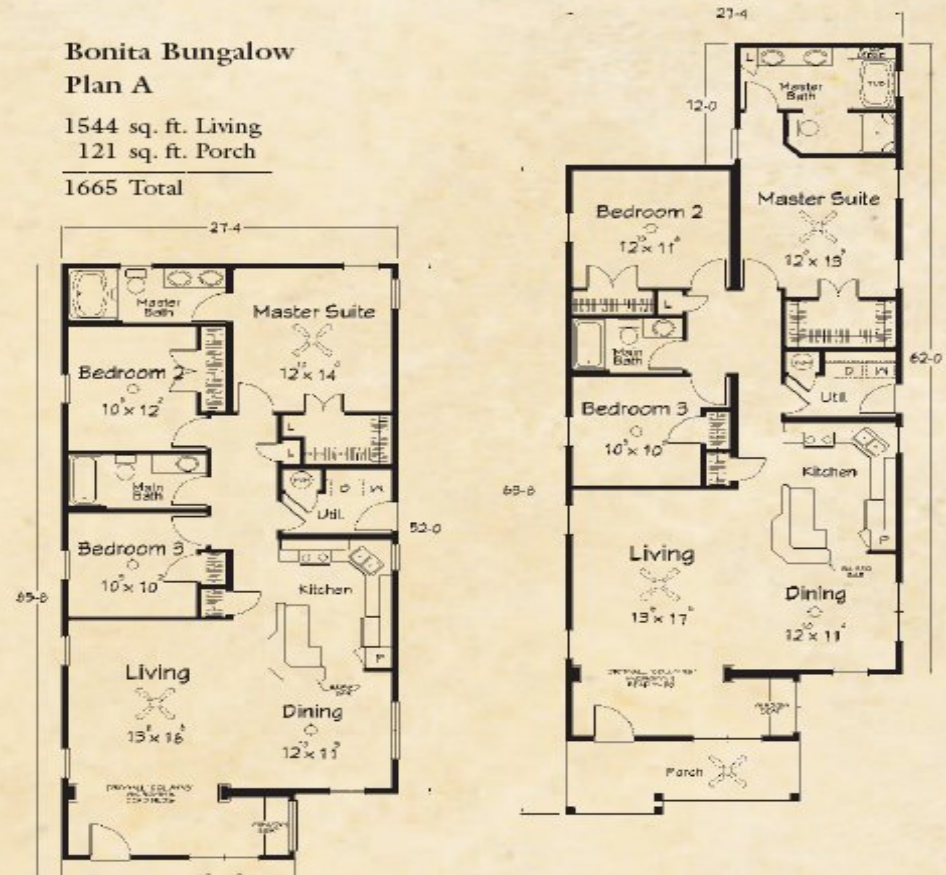
1653 sq. ft. Living
121 sq. ft. Porch

1774 Total

Bonita Bungalow Plan A

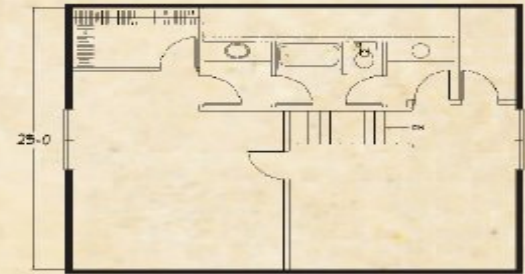
1544 sq. ft. Living
121 sq. ft. Porch

1665 Total





SUPREME MODULAR



Cute Cottage Upper Level

**Please note that the upper level area is designed for economical completion on-site. Refer to Ritz-Craft's Coastal Lifestyle specifications for included materials and discuss all aspects of completion with your homebuilder.*

**Cute Cottage
Main Level**

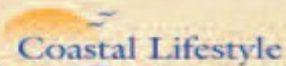
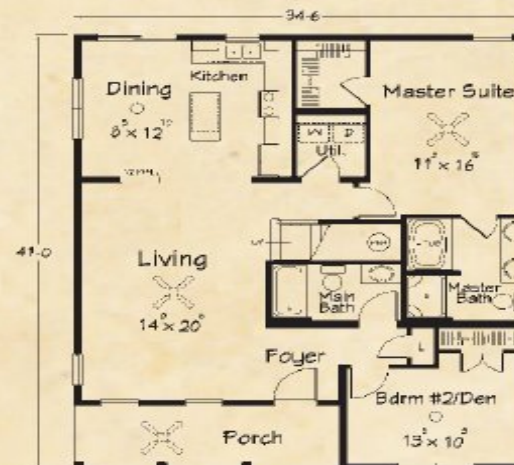
1294 sq. ft. Living
120 sq. ft. Porch

1414 Total

*Plus 809 sq. ft.
available at upper level

the **Cute Cottage**

The name says it all and "cute works". This open floor plan home can provide plenty of family living space or start out small and expand later. The Cute Cottage combines exterior curb appeal and interior livability within a "small footprint" design.



www.ritz-craft.com



SUPREME MODULAR

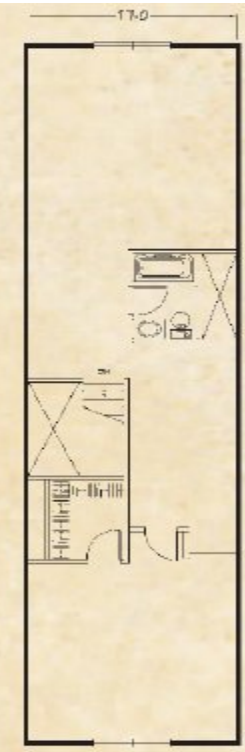


the Belle Chasse Cottage

This "village-style" cottage house is at home in town or in the country. The gracious full width front porch and elegant entry door leads to a surprisingly large and open interior. The huge "cook's kitchen" opens to the rear facing dining nook and patio door. Completion of the upper level adds one or two additional bedrooms—or perhaps, that home theatre you've always wanted.

**Belle Chasse Cottage
Main Level**
 1610 sq. ft. Living
 194 sq. ft. Porch
 1804 Total

*Plus 1122 sq. ft.
 available at upper level



Belle Chasse Cottage Upper Level

**Please note that the upper level area is designed for economical completion on-site. Refer to Ritz-Craft's Coastal Lifestyle specifications for included materials and discuss all aspects of completion with your homebuilder.*



SUPREME MODULAR



the Chandeleur Cape

This large family home's proud exterior blends Acadian and Craftsman elements for a unique transitional style all its own. The grand front porch leads to an elegant entry foyer with broad views of the open plan.

The plan includes a special "bearth kitchen" and the adjacent morning room includes a huge built-in desk area. The center-hall stairwell location provides a "harmony and flow" between the first and second floor living areas.

Chandeleur Cape Main Level

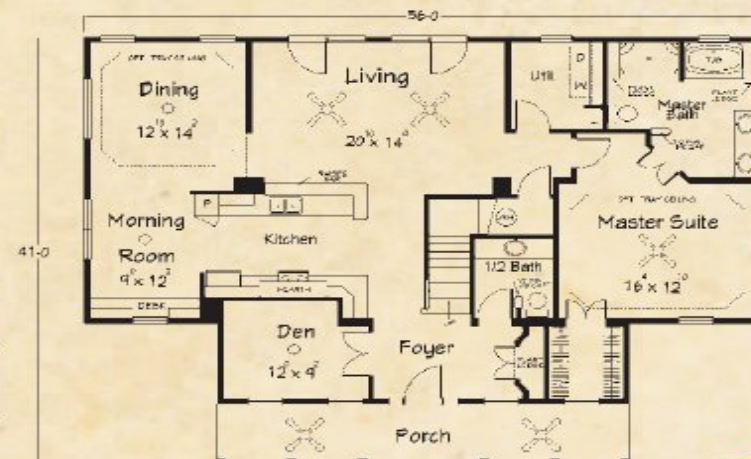
1790 sq. ft. Living
204 sq. ft. Porch
1994 Total

*Plus 1087 sq. ft.
available at upper level



Chandeleur Cape Upper Level

**Please note that the upper level area is designed for economical completion on-site. Refer to Ritz-Craft's Coastal Lifestyle specifications for included materials and discuss all aspects of completion with your homebuilder.*





SUPREME MODULAR



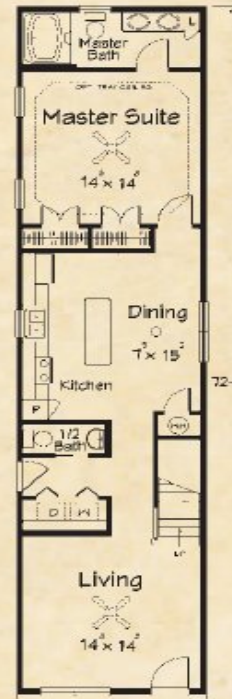
the Camelot Two Story

The classic "camel-back" style home has long been considered the gold standard for form and function in a compact and efficient plan. A double gable front porch provides entry to this classic shotgun style floor plan which features a big kitchen with pantry and island cabinetry and a stately, first floor master's suite complete with his and hers closets.

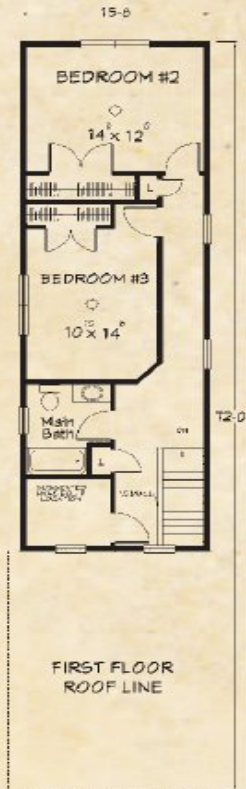
Camelot Two Story First Floor

1034 sq. ft. 1st Floor Living
767 sq. ft. 2nd Floor Living
84 sq. ft. Porch

1885 Total



Camelot Two Story Second Floor





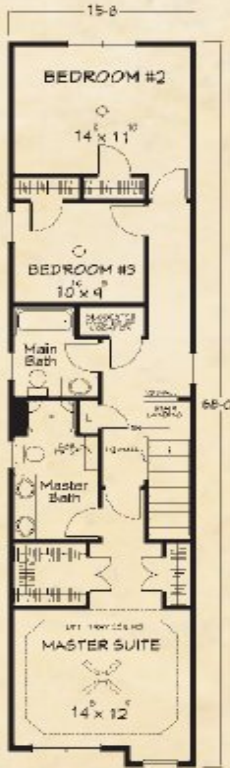
SUPREME MODULAR

Garden City Two Story First Floor A

1002 sq. ft. 1st Floor Living
1050 sq. ft. 2nd Floor Living
94 sq. ft. Porch

2146 Total

Garden City Two Story Second Floor A

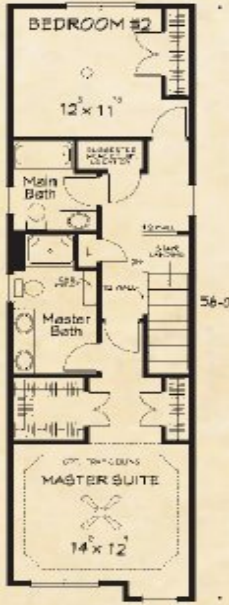



Garden City Two Story First Floor B

762 sq. ft. 1st Floor Living
862 sq. ft. 2nd Floor Living
94 sq. ft. Porch

1718 Total

Garden City Two Story Second Floor B





the **Garden City Two Story**

The charming, narrow lot friendly, Garden City plans provide large house square footage in a small frontage design. Stylishly appointed, both inside and out, these two story plans can make the most of your home site. Choose either plan and you'll enjoy a large workable kitchen with a walk-in pantry and a private master's suite with a large bath and his and hers closets.



SUPREME MODULAR



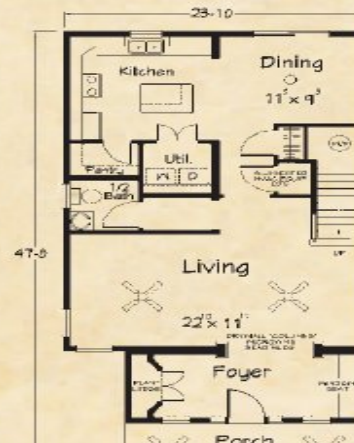
the Gravier Two Story

This New Orleans style jewel is the elegant answer for a smaller, upscale home site. The classic gable roofed, porch-over-porch at the front of the home provides a beckoning entry for the first floor and a grand, private veranda extending from the second floor master suite. Upscale interior features including built-in window seats and entry foyer columns compliment the home's comfortable floor plan.

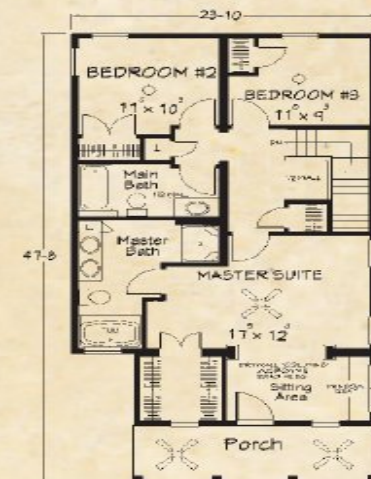
Gravier Two Story First Floor

956 sq. ft. 1st Floor Living
956 sq. ft. 2nd Floor Living
228 sq. ft. Porch

2140 Total



Gravier Two Story Second Floor





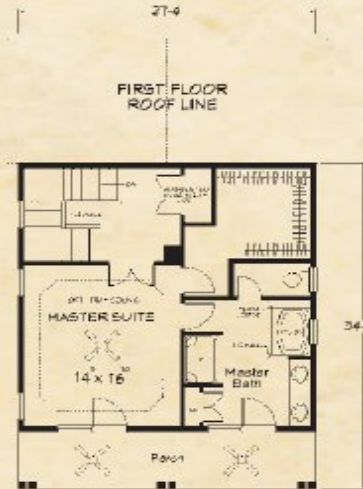
SUPREME MODULAR



the **Bayou Breeze**
Two Story

The "Breeze" is everybody's favorite two story water view house. The double stacked porches let you drink in the fresh air and that special view. Step out onto the porches from the wide open Great Room or greet the day as you step out from your beautiful master suite.

Bayou Breeze Two Story
Second Floor
Plan A

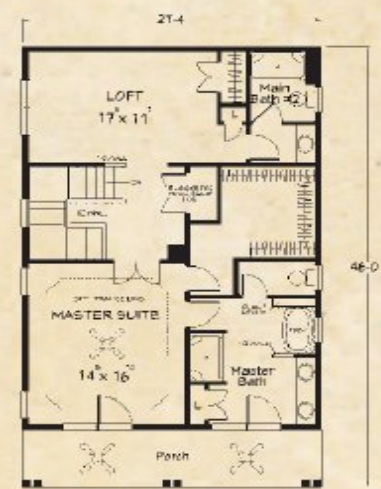


Bayou Breeze Two Story
Plan A

1857 sq. ft. Living
328 sq. ft. Porch

2185 Total

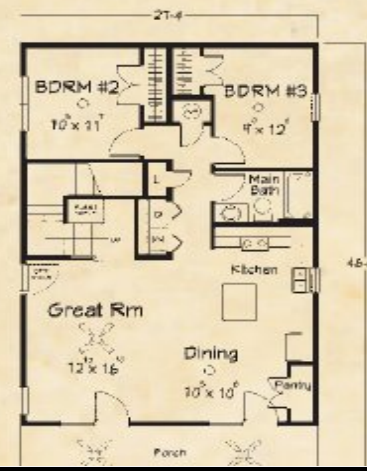
Bayou Breeze Two Story
Second Floor
Plan B



Bayou Breeze Two Story
Plan B

2185 sq. ft. Living
328 sq. ft. Porch

2513 Total





SUPREME MODULAR



Back Porch View



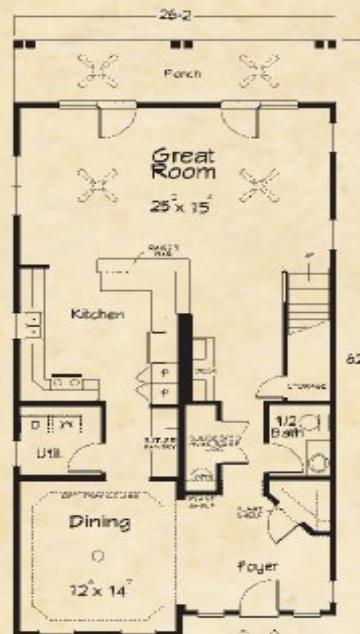
the Buena Vista Two Story

The true beauty of this home grows as it unfolds itself upon your entry. As you pass from the elegant foyer and move toward the impressive, rear facing Great Room, you can then begin to appreciate the spectacular views available from the gathering spaces and broad rear porch. That same view awaits the owners each day as they enjoy their own private, second story porch spanning the full width of the master suite.

Buena Vista Two Story First Floor

1335 sq. ft. 1st Floor Living
1385 sq. ft. 2nd Floor Living
414 sq. ft. Porch

3134 Total



Buena Vista Two Story Second Floor

