



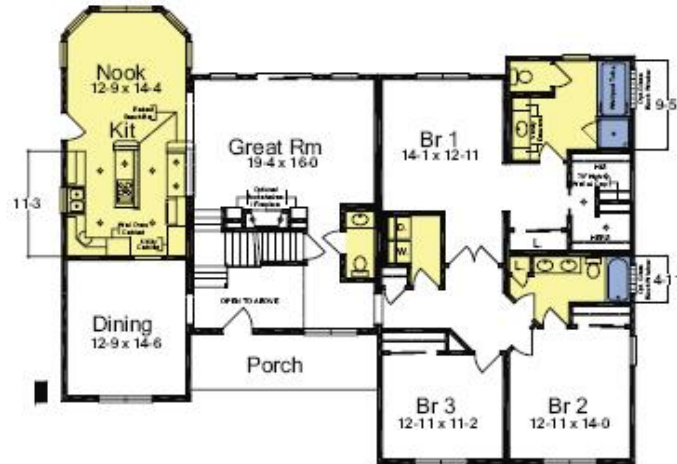
SUPREME MODULAR



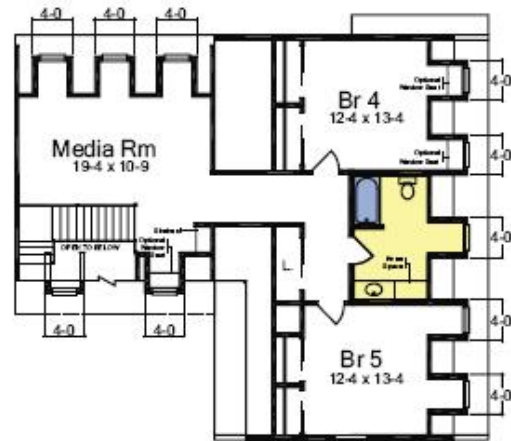
Supreme Modular Homes Custom Select Series Cape

(T) 856-652-2382 (F) 856-652-2489
www.suprememodular.com

SUPREME MODULAR



Biltmore 1st Floor 61'-3" x 43'-6", 3450 sq ft



Biltmore 2nd Floor

SUPREME MODULAR

SIGNATURE SERIES



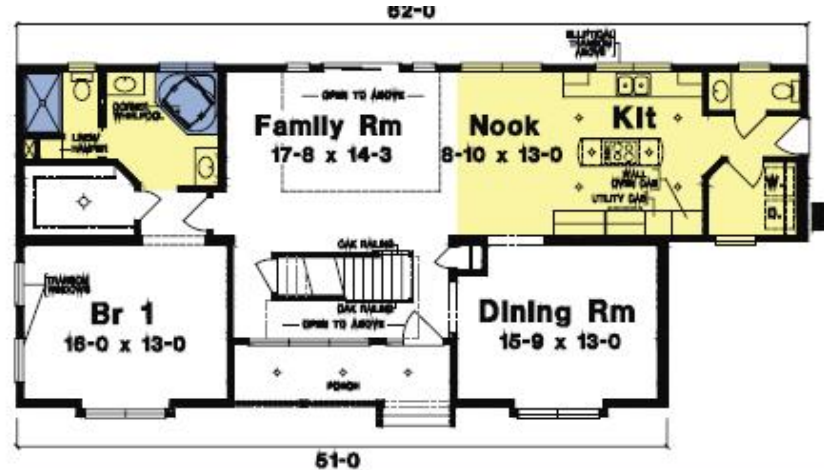
Berkshire 1st Floor 3075 sqft

Berkshire 2nd Floor



SUPREME MODULAR

**SIGNATURE
SERIES**



Cambridge II 26'-9"/27'-6" x 51'-0"/62'-0", 2590 sq ft

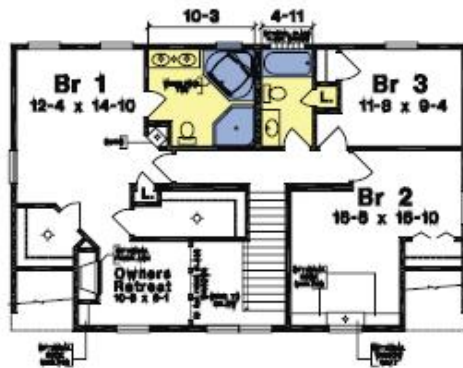


Cambridge II 2nd Floor

SUPREME MODULAR



Hyannis 1st Floor 33'-9"/27'-6" x 44'-0", 2626 sq ft

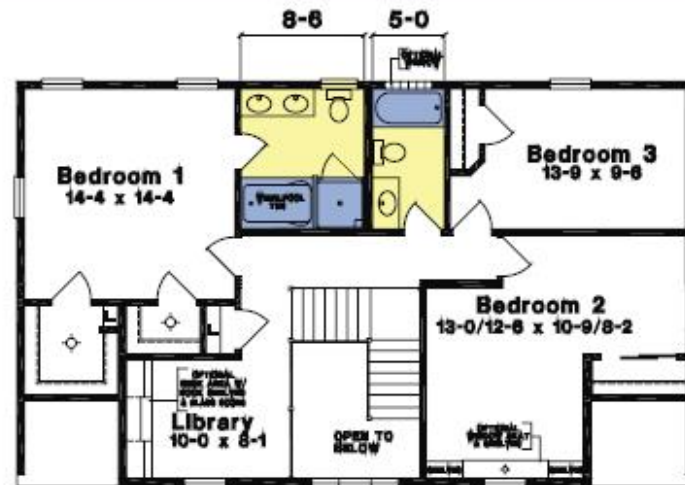


Hyannis 2nd Floor

SUPREME MODULAR

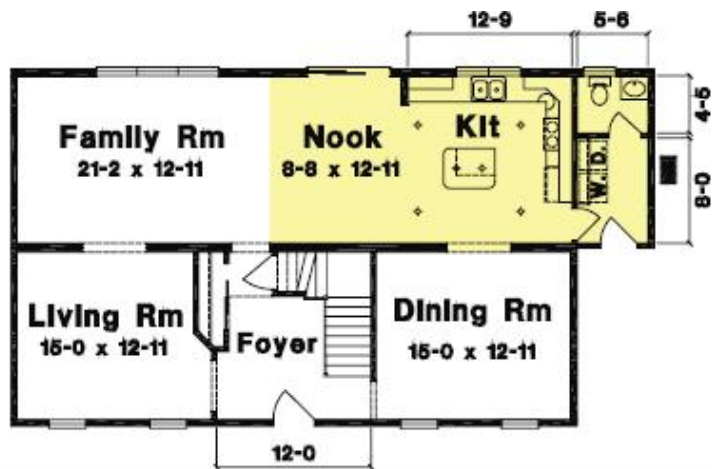


Sturbridge 1st Floor 27'-6" x 46'-0", 2450 sq ft

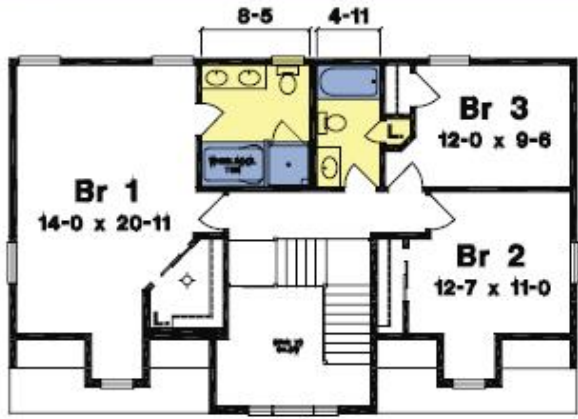


Sturbridge 2nd Floor

SUPREME MODULAR

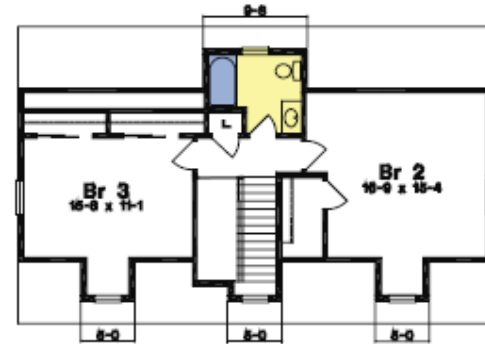
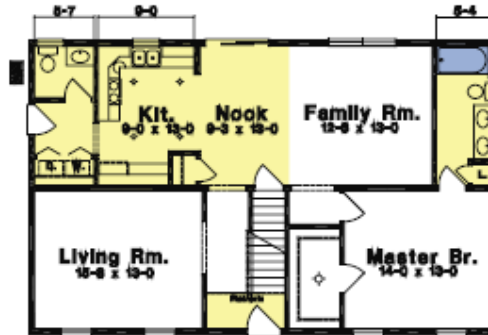


Westport 1st Floor 27'-6" x 44'-0" / 50'-0", 2360 sq ft

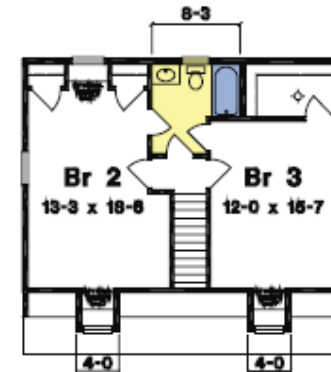


Westport 2nd Floor

SUPREME MODULAR



Southport 27'-6" x 44', 1870 sq ft

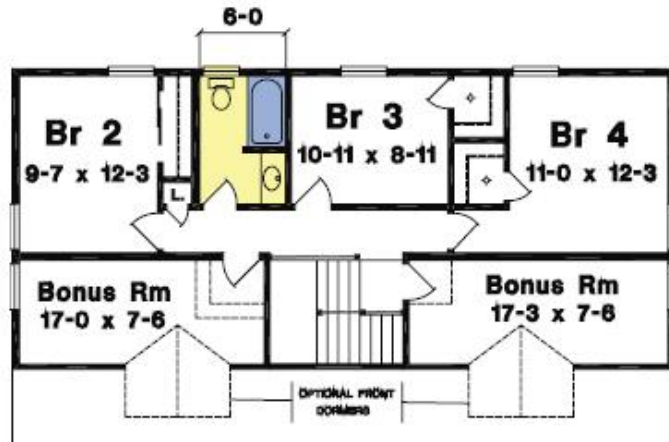


Eastport 27'-6" x 30'-0"/31'-0", 1527 sq ft

SUPREME MODULAR

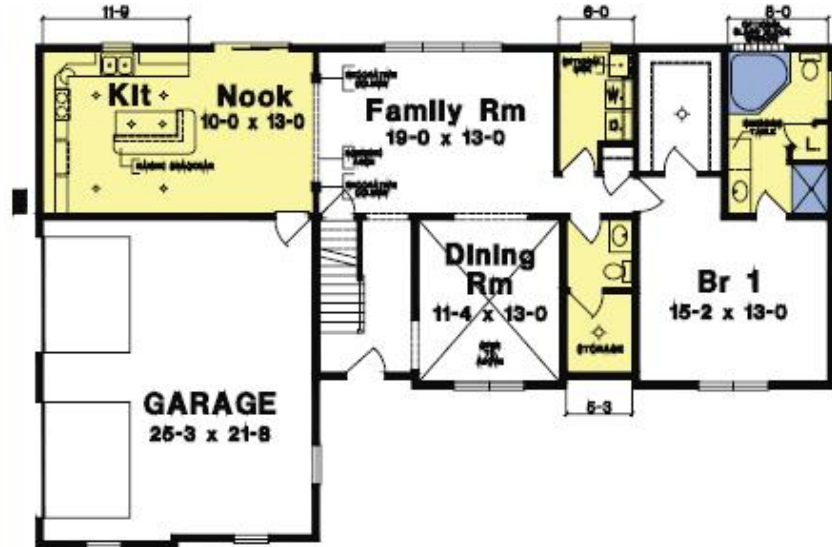


Westfield 1st Floor 26'-0" x 46'-0", 1794 sq ft

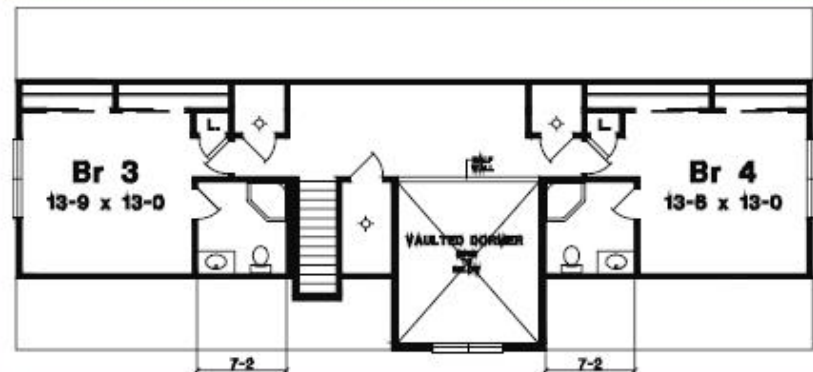


Westfield 2nd Floor

SUPREME MODULAR

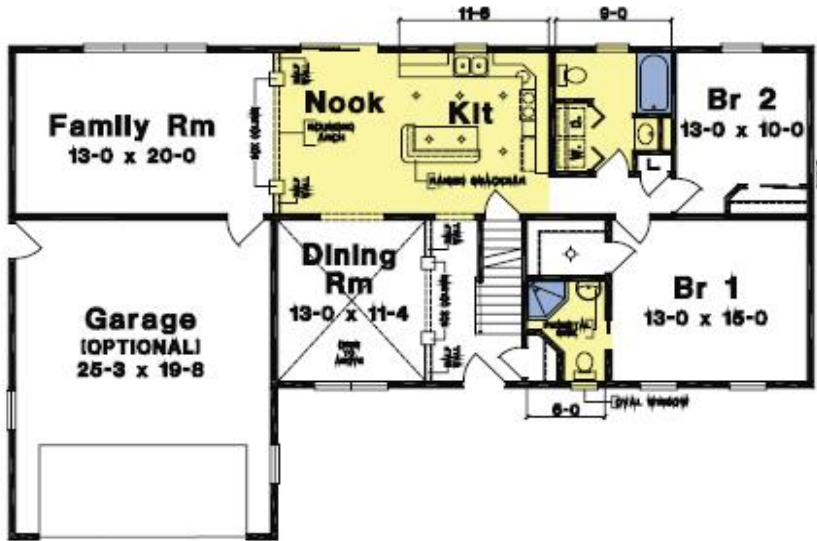


Bradford 1st Floor 27'-6" x 40'-3" x 64'-0", 1443 sq ft

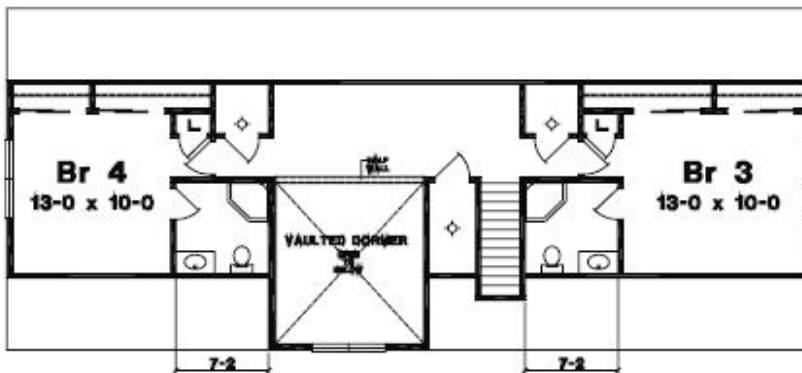


Suggested 2nd Floor Plan, 848 sq ft

SUPREME MODULAR



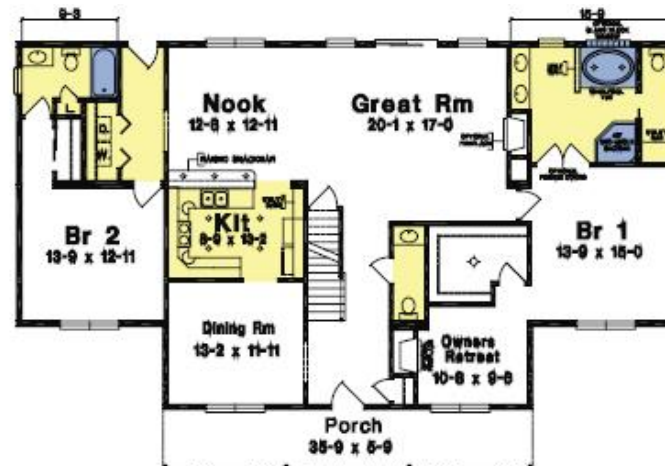
Bennington 1st Floor 27'-6" x 39'-9" x 62'-0", 1430 sq ft



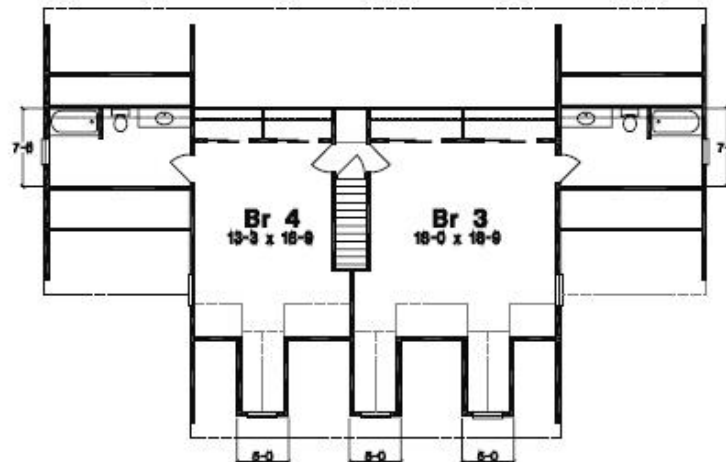
Bennington Suggested Second Floor, 936 sq ft



SUPREME MODULAR

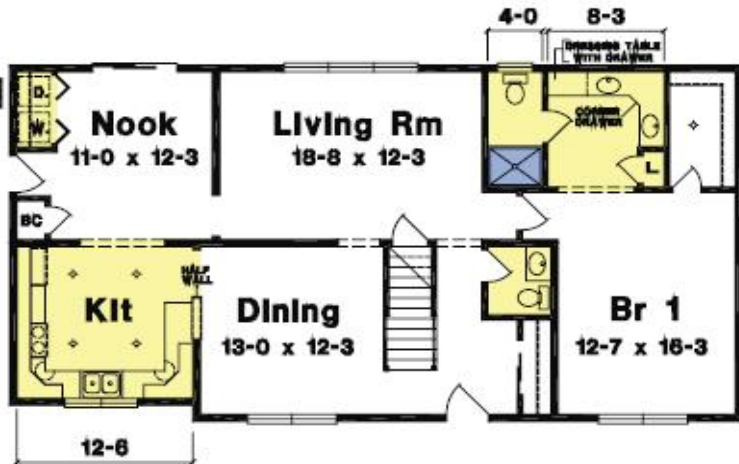


Williamsburg 1st Floor 41'-5" x 64'-0", 2250 sq ft



Williamsburg Suggested 2nd Floor, 1057 sq ft

SUPREME MODULAR

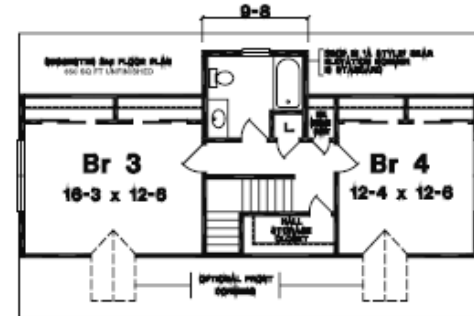
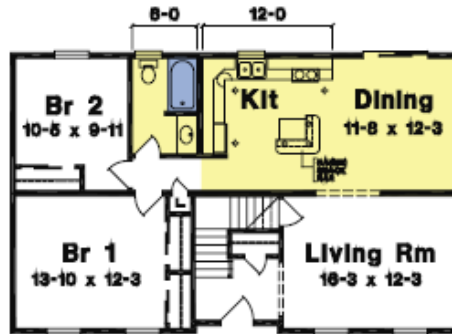


Chatham 1st Floor 26'-0" x 52'-0", 1336 sq ft

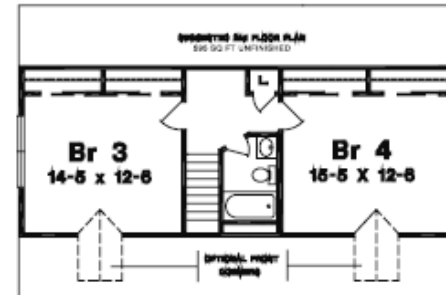


Chatham Suggested 2nd Floor Plan, 770 sq ft

SUPREME MODULAR

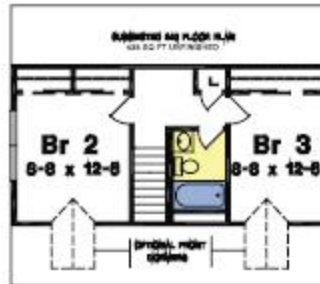
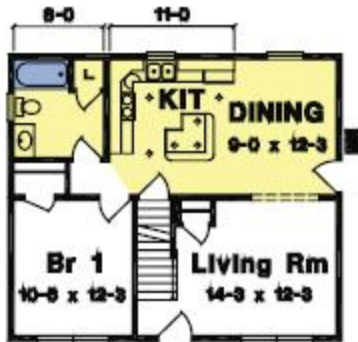


Plymouth 1st Floor 26'-0" x 42'-0", 1092 sq ft

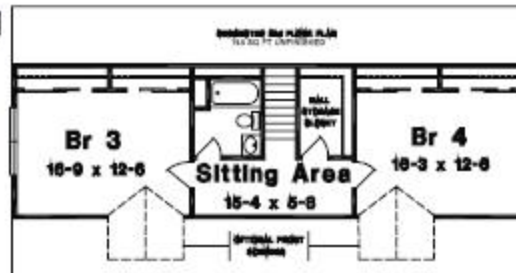
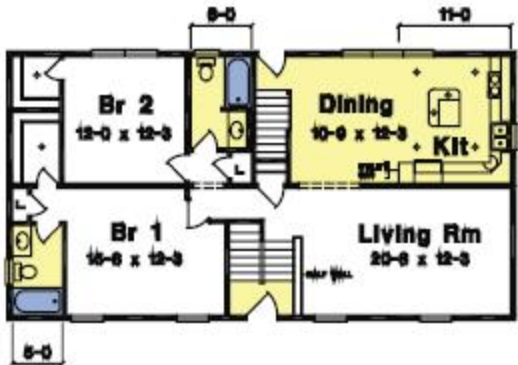


Cape Vincent 1st Floor 26'-0" x 40'-0", 1040 sq ft

SUPREME MODULAR



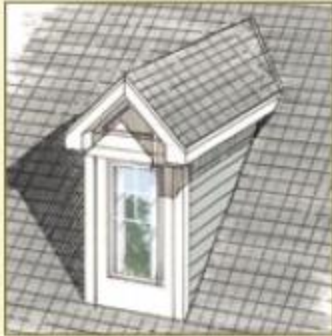
Cape Cottage 26'-0" x 29'-6", 767 sq ft



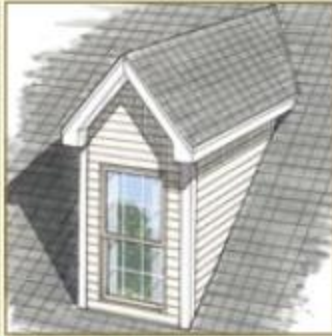
Durham 26'-0" x 50'-0", 1300 sq ft



SUPREME MODULAR



(A) 3'-0" DORMER



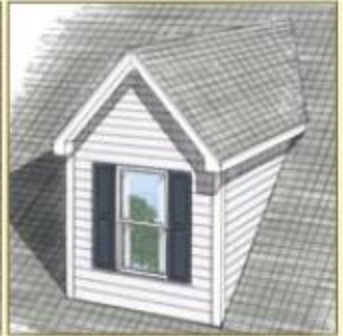
(B) 4'-0" DORMER



(C) 5'-0" DORMER



(D) 5'-0" DORMER



(E) 7'-4" DORMER



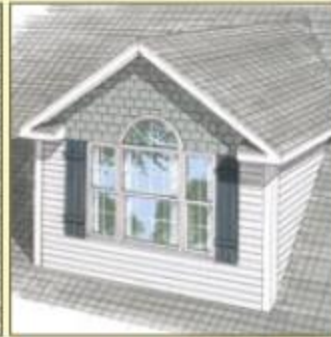
(F) 7'-4" DORMER



(G) 9'-8" DORMER



(H) 9'-8" DORMER



(I) 13'-0" DORMER