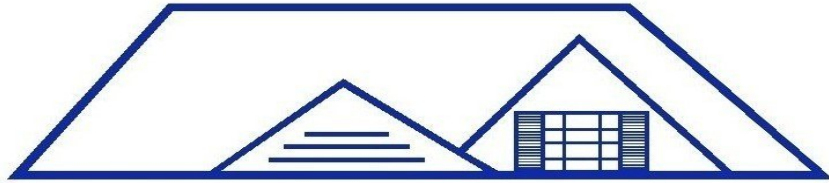


SUPREME MODULAR

Designer Series Two Story





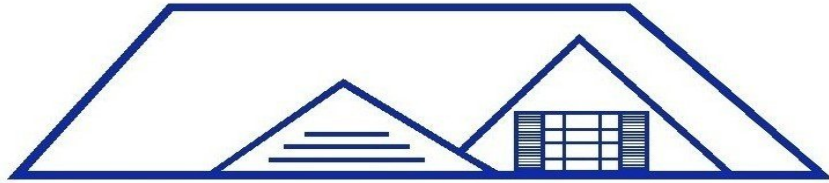
SUPREME MODULAR

Choose from our popular elevations



... or design your own





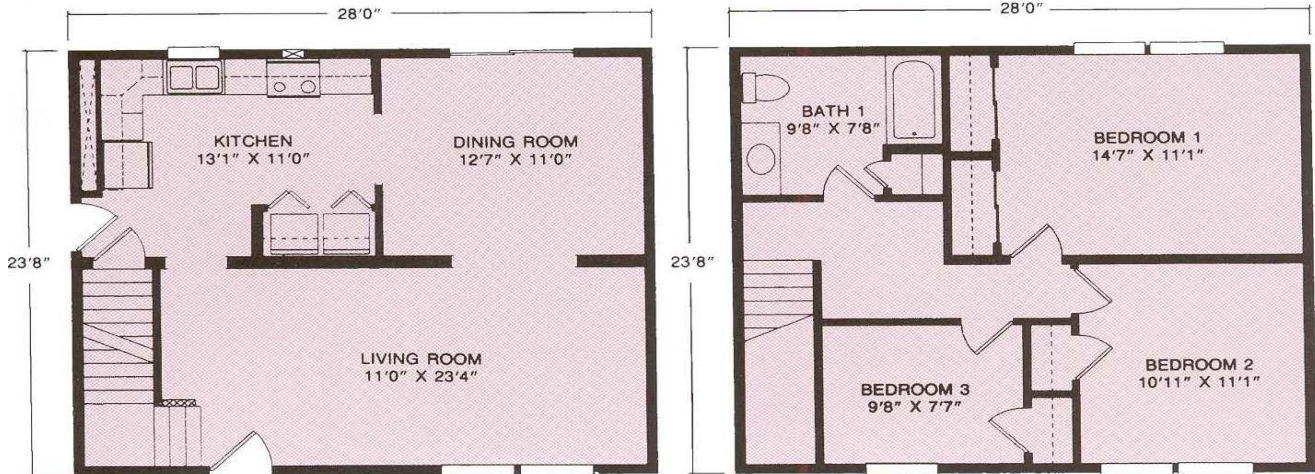
SUPREME MODULAR

Popular Elevations





SUPREME MODULAR

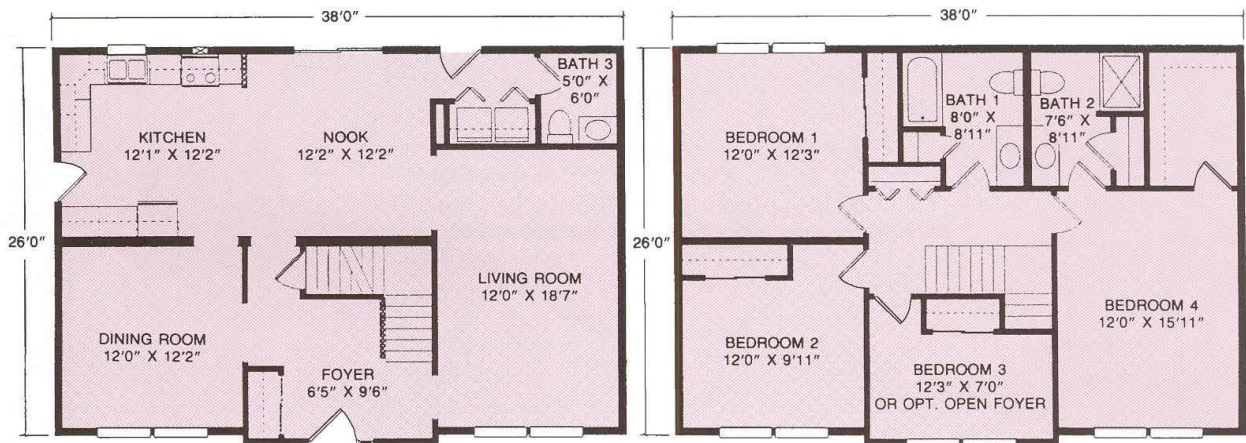


The Norwood

Plan No. 501 ■ 1325 SQ. FT.

Offering space and privacy for family or guests, this home features three large bedrooms with generous closet space, spacious bath and expansive living room.

Also available in 26' width.



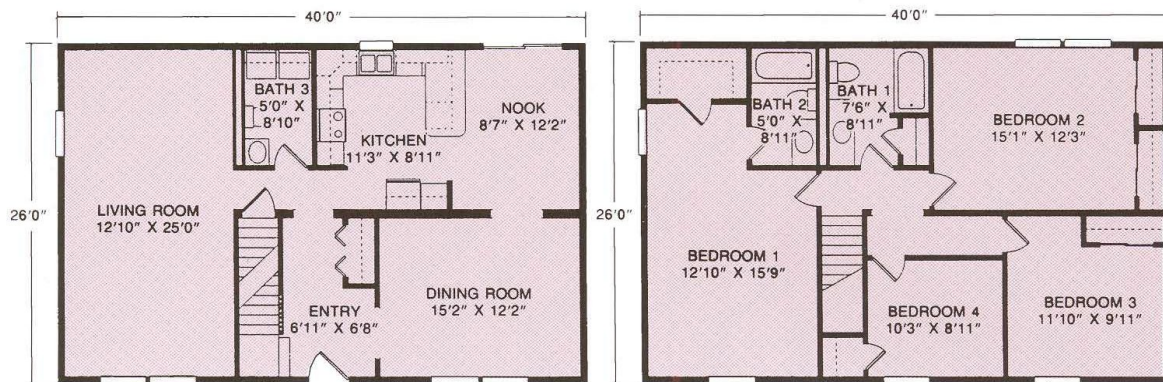
The Bridgeport

Plan No. 504 ■ 1976 SQ. FT.

Elegant space for living and entertaining with grand master bedroom suite with tremendous walk-in closet and private bath. Three additional bedrooms, and expansive formal living room. Also available in 27'6" width.



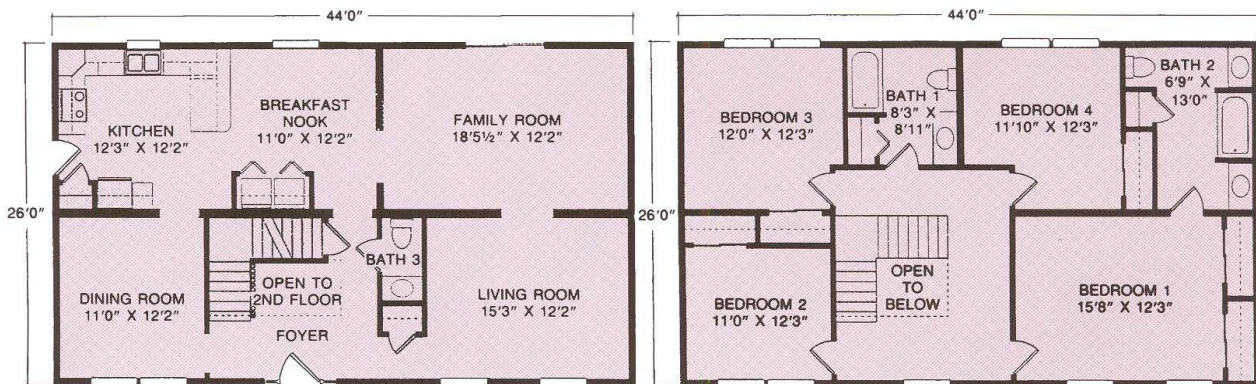
SUPREME MODULAR



The Chatwood

Plan No. 505 = 2080 SQ. FT.

Special features and space you'll love with expansive master bedroom suite with private bath and large walk-in closet, three additional bedrooms, one and one half baths. Also available in 27'6" width.



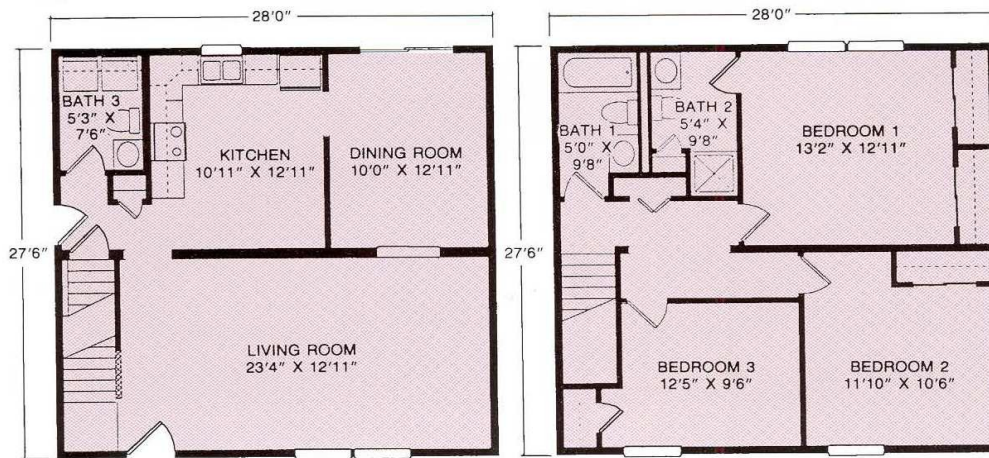
The Crestmont

Plan No. 506 = 2288 SQ. FT.

A true "family" home with immense master bedroom with adjoining bath area that features his and her bath vanities, three additional bedrooms, one and one half baths, first floor laundry area, large kitchen and breakfast nook. Also available in 27'6" width.



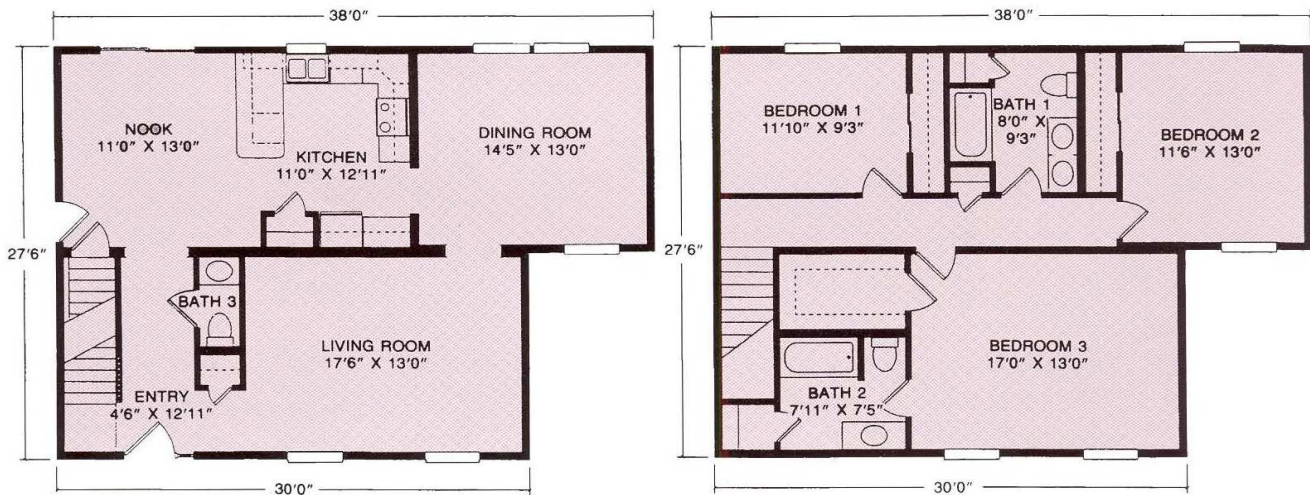
SUPREME MODULAR



The Franklin

Plan No. 507 ■ 1540 SQ. FT.

Convenience and features that make a house a home, such as large master bedroom with three quarter bath, two additional bedrooms, one and one half baths, with first floor laundry area, spacious kitchen, and formal dining room.



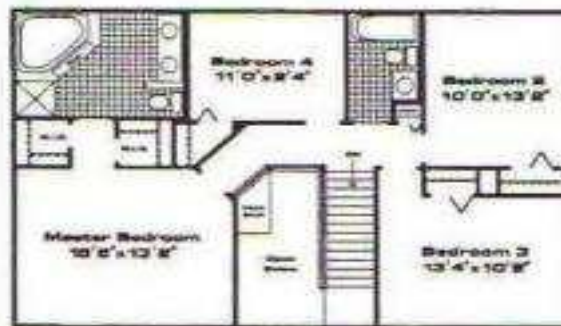
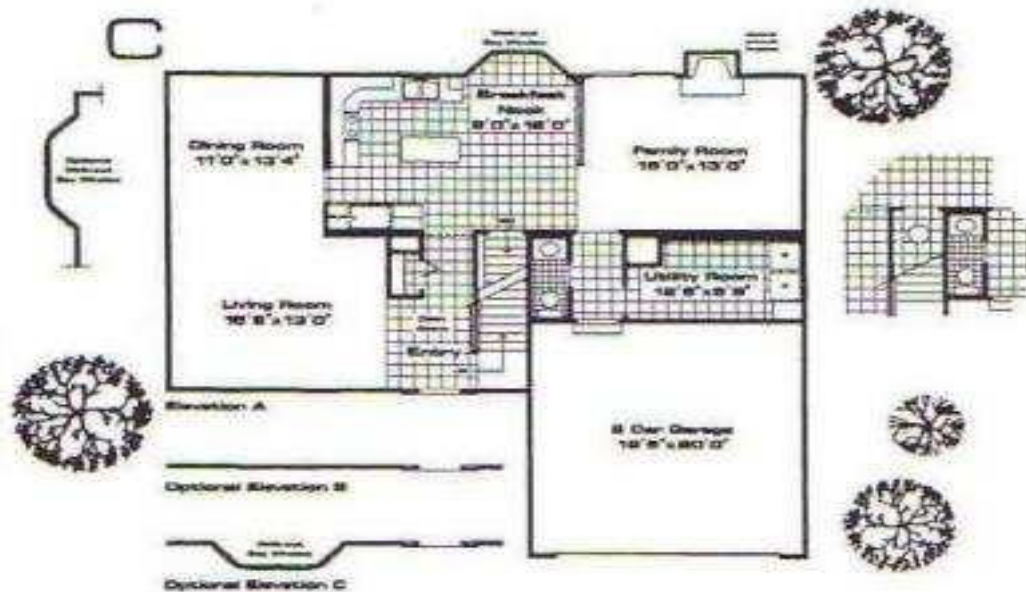
The Jamestown

Plan No. 510 ■ 1870 SQ. FT.

Featuring large master bedroom suite with private bath and walk-in closet, two additional bedrooms, one and one half baths, and formal dining room.



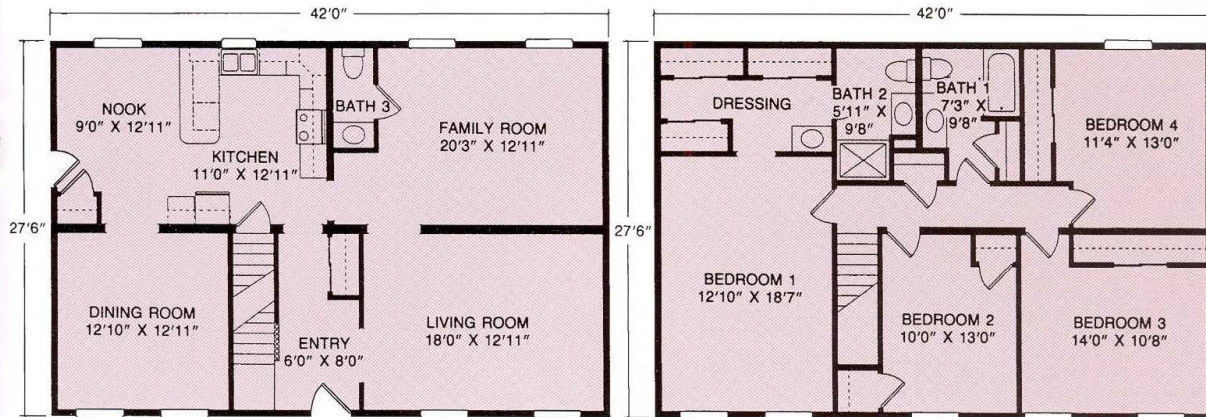
SUPREME MODULAR



2231 SQ. FT.



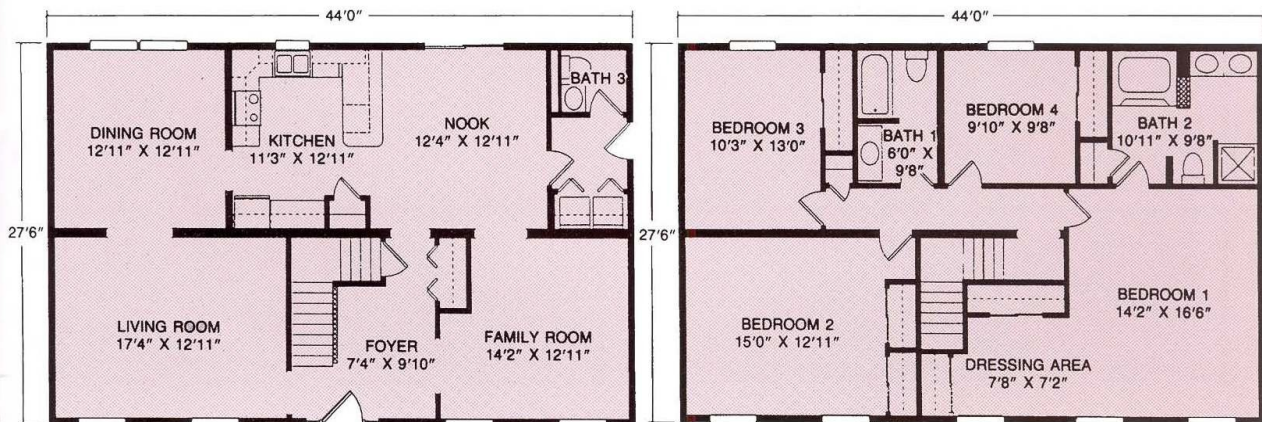
SUPREME MODULAR



The Gettysburg

Plan No. 512 ■ 2310 SQ. FT.

Comfort and convenience with expansive master bedroom suite with adjoining bath and dressing area, three additional bedrooms, one and one half baths, large kitchen, family room.



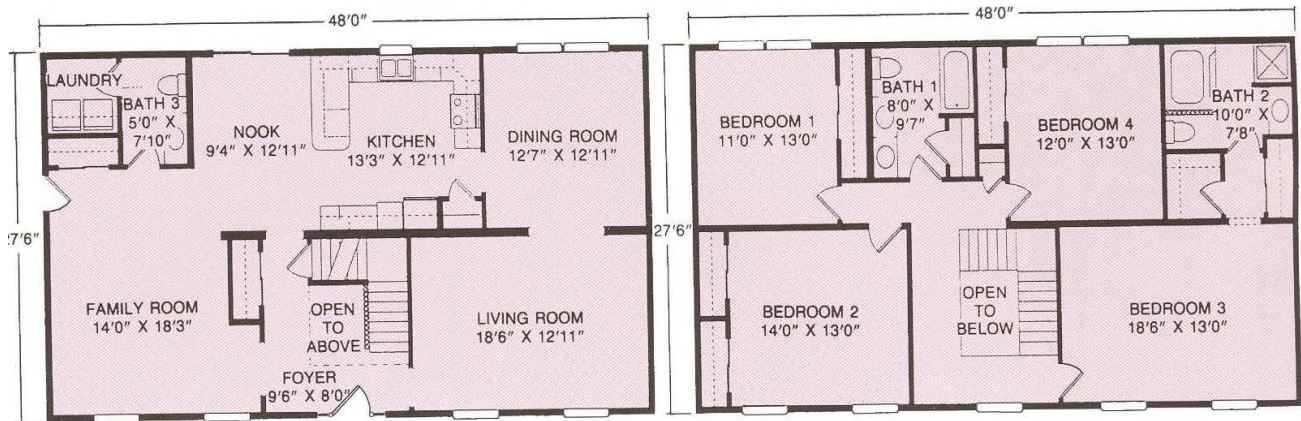
The Williamsburg

Plan No. 503 ■ 2420 SQ. FT.

Space for the growing family, super master bedroom suite with private bath and dressing/sitting area, one and one half baths, three additional bedrooms, spacious family room and large, sunny breakfast room.



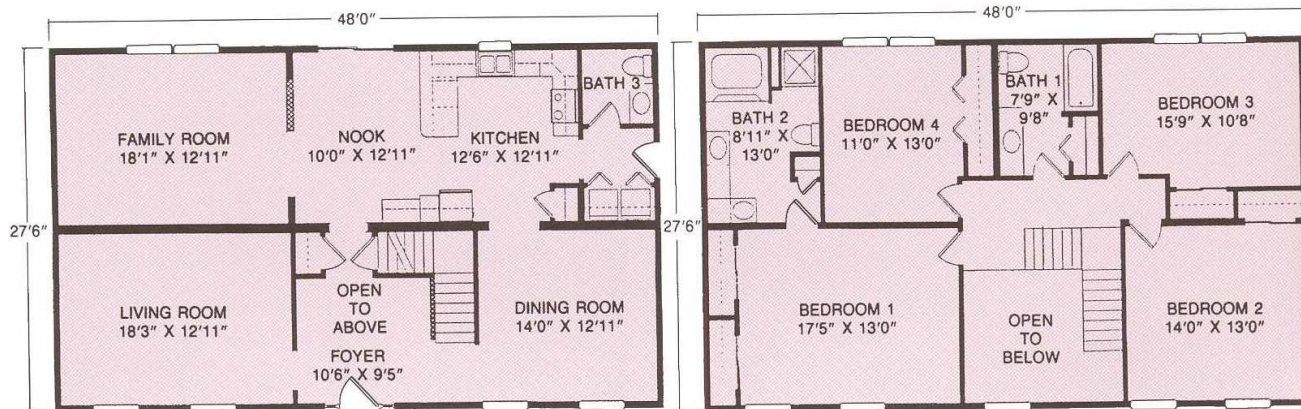
SUPREME MODULAR



The Martinsburg

Plan No. 513 ■ 2640 SQ. FT.

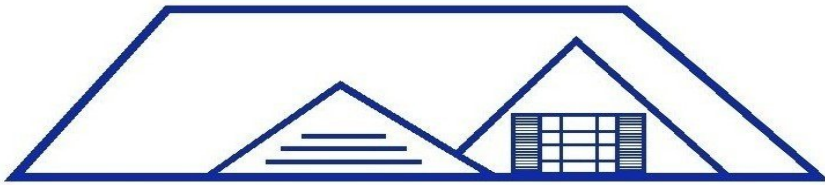
Come home to luxurious space with grand master suite featuring walk-in closet and large private bath, one and one half baths, three additional bedrooms, family room, and formal dining room.



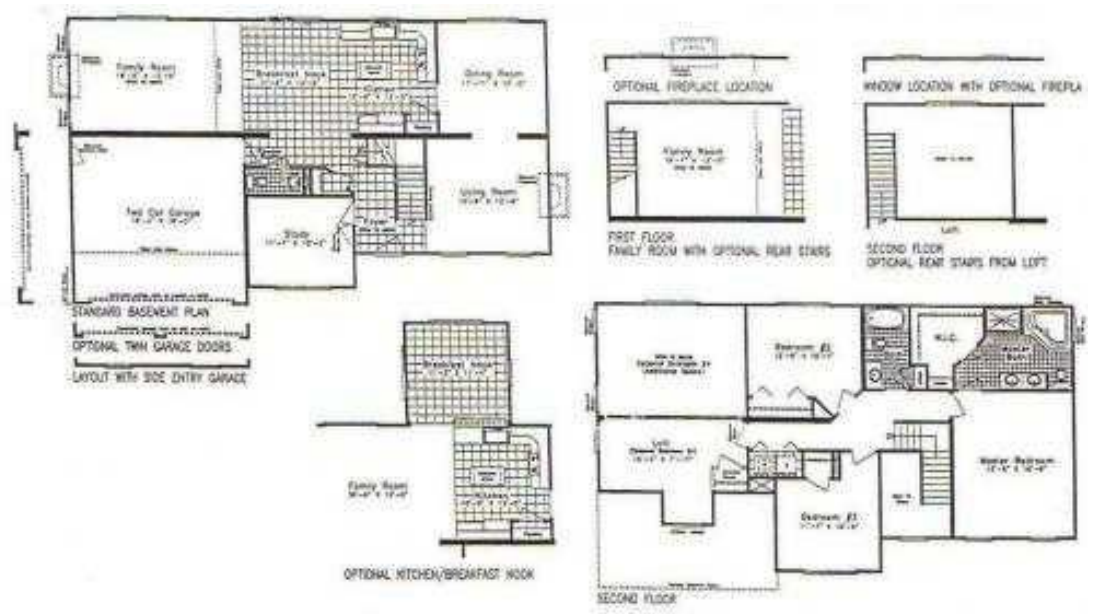
The Oakmont

Plan No. 514 ■ 2640 SQ. FT.

Featuring an elegant open foyer, family room, large kitchen/breakfast area, formal dining room, massive master bedroom with private deluxe bath, one and one half additional bathrooms with three additional bedrooms.

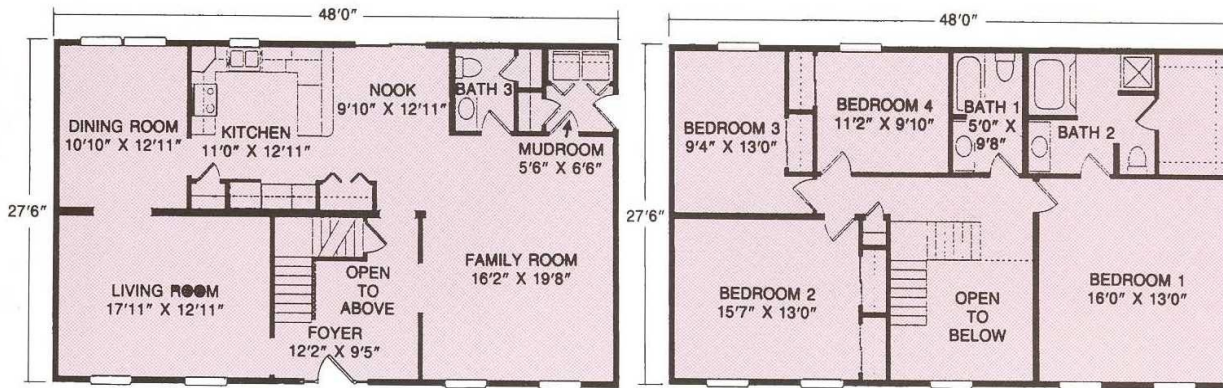


SUPREME MODULAR





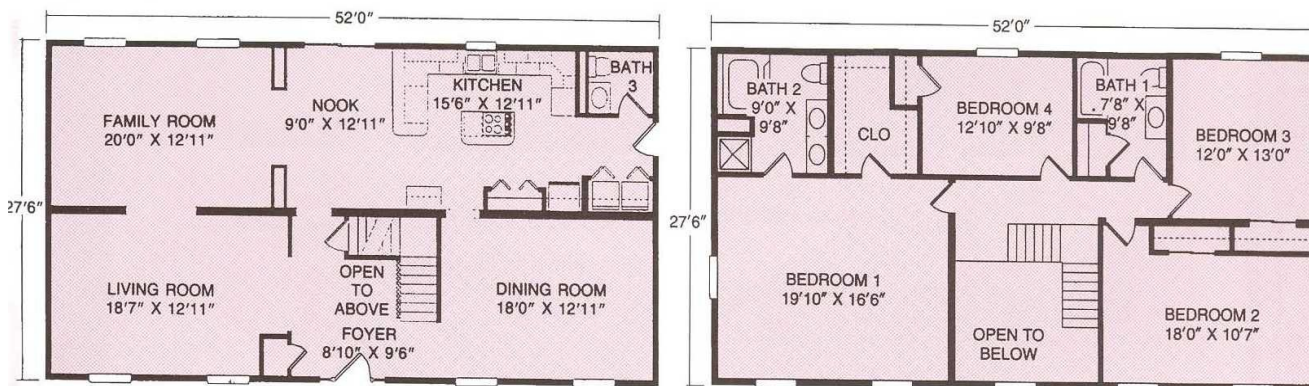
SUPREME MODULAR



The Oxford

Plan No. 515 ■ 2640 SQ. FT.

So many facets make this home a gem, featuring grand master bedroom suite with walk-in closet and luxurious private bath, three additional bedrooms, one and one half baths, elegant staircase open to foyer, convenient first floor laundry.



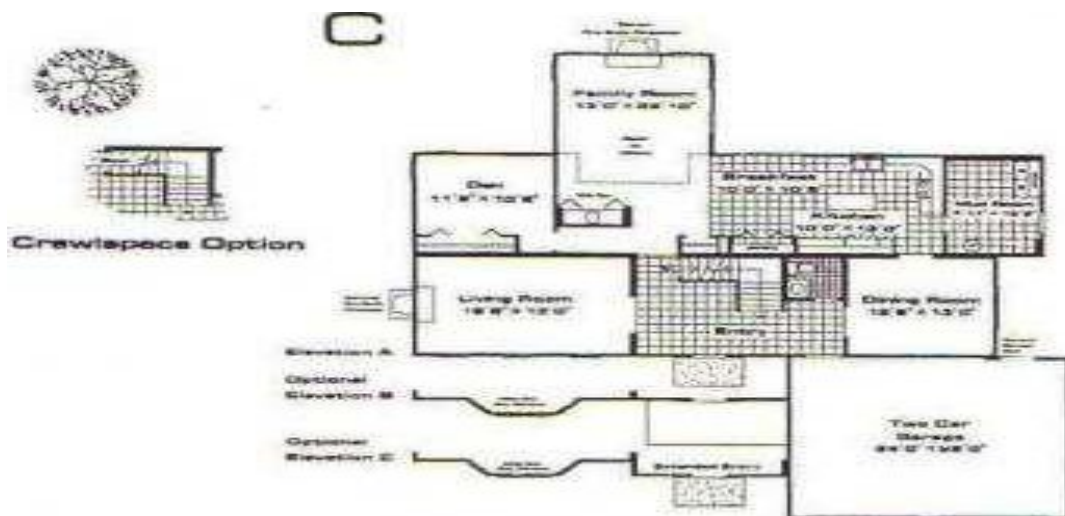
The Rutledge

Plan No. 516 ■ 2860 SQ. FT.

The ultimate in luxurious convenience, featuring a grand master bedroom suite with walk-in closet and deluxe private bath, three additional spacious bedrooms, one and one half baths, family room, welcoming entrance open foyer.

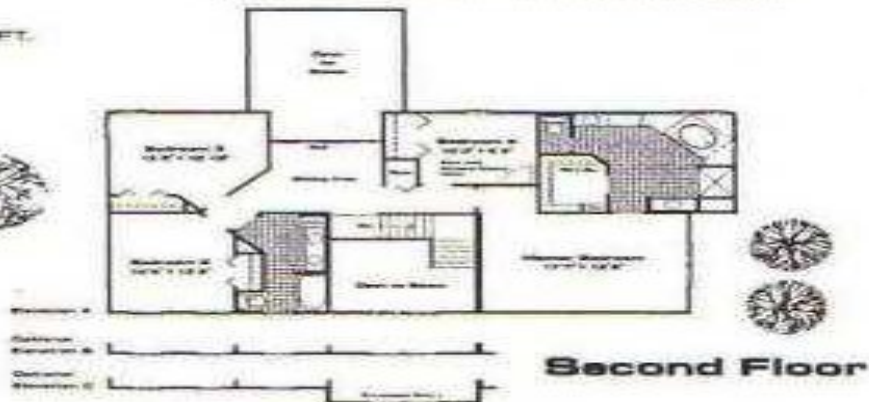


SUPREME MODULAR

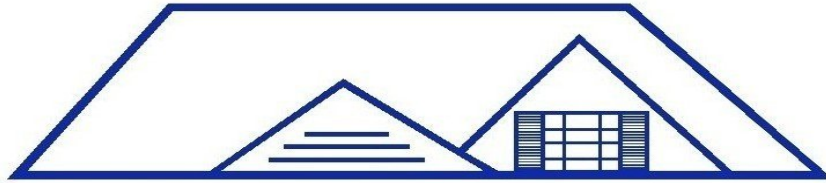


First Floor - Basement

3029
TOTAL SQ. FT.



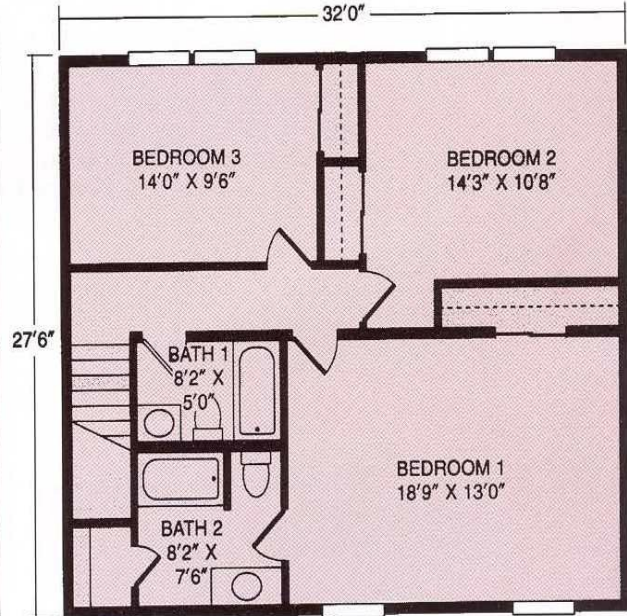
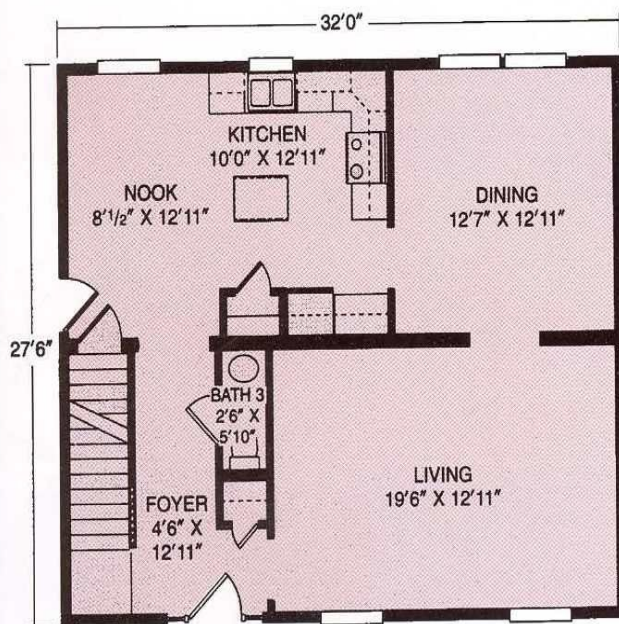
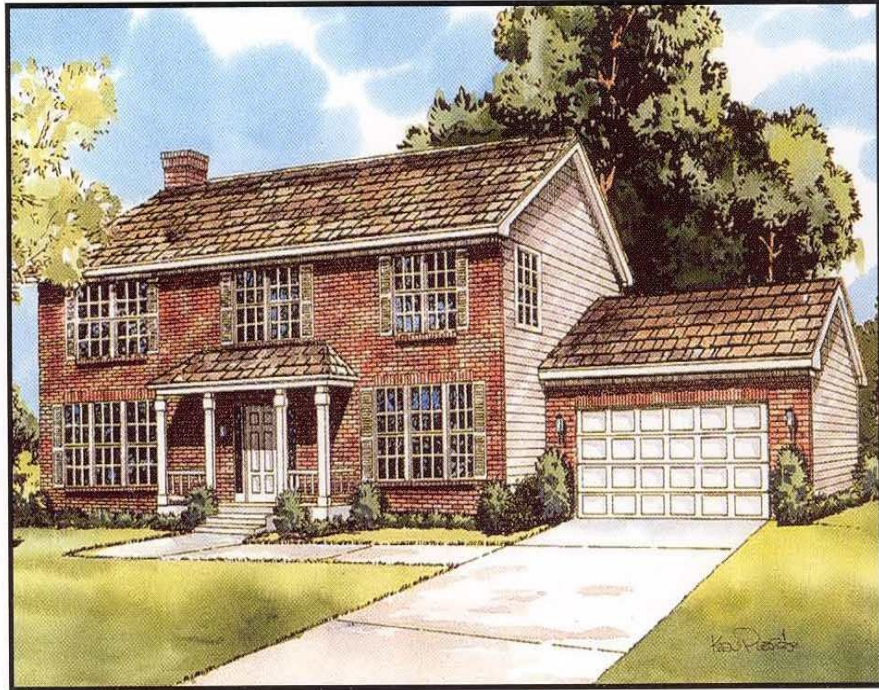
Second Floor



SUPREME MODULAR

The Freeport

Plan No. 508 ■ 1760 SQ. FT.
 Welcome home to comfort with a master bedroom with full bath, two additional bedrooms, one and one half baths, large kitchen with island, formal dining room, elegant foyer and spacious living room.





SUPREME MODULAR

Designer Series Specifications

FLOOR SYSTEMS

2X8 SPF Floor Joists -16" OC with solid bridging, double 2x8 front and rear perimeter
 -24 wide single story homes & 24 wide two-story homes
 2x10 SPF Floor Joists -16" OC with solid bridging, double 2x10 front and rear perimeter
 -26/28 wide, all split levels, and 26/28 wide two-story homes
 Agency Rated 19/32 T & G Sturdy-Floor Glue and Stapled

WALLS

Exterior -2x6 24" OC with single bottom and double top plate
 -2x6 -16" OC with single bottom and double top plate
 (Two story 1st floor)
 -R-19 Kraft Faced Fiberglass insulation
 -7/16" OB Exterior wall sheathing
 Marriage -Double 2x3-24" OC (except 16" OC 28 wide single story, two story)
 -Structural sheathing on marriage walls
 Partition -2x4 24" OC
 Interior - 1/2" Finished Drywall painted -primer coat
 - 8'0" Ceiling Height

ROOF & CEILING

5/12 Trussed Roof - 24" OC
 12/12 Trussed roof - Capes 24" OC (24W); 16" OC (26/28W)
 7/16" OB Roof Sheathing
 IKO Cambridge Dimensional 30 Year Shingles with 15 lb. Underlayment
 R-32 Fiberglass Insulation with Kraft Vapor Barrier
 5/8" Smooth finished Drywall Ceiling with one coat Primer Paint
 11" gable and fixed eave overhang (24/26 wide), 11" gable, 16" flip eave overhang (28 wide) with aluminum
 Fascia and vinyl vented soffit
 Aluminum ridge vent.

INTERIOR

FHA Plush Carpet with Deluxe pad
 Vinyl floor covering in Kitchen, Baths, and Utility area
 Vented Closet Shelves with Clothes Bar
 Ceiling light in Kitchen, Dining room, Bath, Hall and Stairwell
 6 Panel White Colonial Doors with Matching Trim w/Lever Style Locksets

EXTERIOR

Steel Insulated Front and Rear door or Thermal Break, Low-E vinyl Patio Door (as required per plan)
 Super Seal #1850 vinyl double hung high performance glass tilt window with screens
 Siding, 4/4 vinyl over 7/16 Oriented Board Sheathing
 White Front and Rear Porch Lights (one per exterior door except raised ranches and two-stories)
 (2) at front door
 Shutters on front of house.
 Air Barrier Wrap

KITCHEN

Aristokraft "Oakland Wheat" Cabinets
 Open Soffit over Kitchen cabinets - 24W
 27" Extended Soffit over Kitchen Cabinets - 26W, 28W & Two-Story
 Self Edge Countertop with 4" Backsplash
 White or Almond Range Hood with Light & Fan
 Double Bowl Stainless Steel Sink.
 Single Lever Faucet with sprayer

BATH

60" One-piece Fiberglass Tub/shower combination
 Anti-Scald Valves on Tub and Showers
 Low consumption water closet
 Aristokraft "Oakland Wheat" Vanity Cabinet w/Laminate top and set-in Porcelain Bowl
 Medicine Cabinet - (1) 18x26 Beveled Mirror Cabinet with Integral Light Bar over Vanities throughout 48"
 (1) 36" Tri-Door Beveled Mirror Cabinet with Integral light Bar over Single Bowl Vanities over 48" and
 (2) 18x26 Beveled Mirror Cabinet with Integral light Bar over Double bowl Vanities
 Combination Fan/light Ventilation unit
 Towel Bar and Toilet Paper Holder
 Single lever Faucet

PLUMBING

Pex Water Supply Lines stubbed through floor
 Energy Saver 50 gallon electric hot water heater
 PVC Drain, Waste and Vent System
 Shut-Off Valves throughout

ELECTRICAL

Standard Lighting Fixtures
 Wired per National Electric Code
 200 AMP Main Service Panel
 Exterior Weatherproof GFI protected Circuit (Front and Rear)
 AC/DC Smoke Detectors
 Doorbell at front door
 Phone Jacks, total (3), Living Room, Kitchen, Master Bedroom
 TV Jacks, total (2) Living Room, Master Bedroom
 Smoke Detectors in all Bedrooms

HEATING

Electric baseboard heat with wall mounted thermostats or Hot Water Baseboard
 Heating elements (optional charge for second story of two story units).