



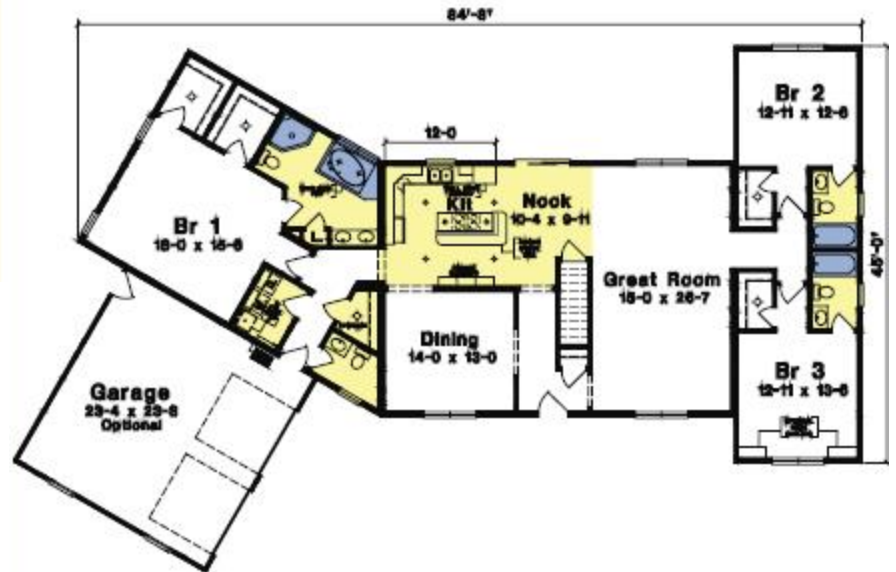
SUPREME MODULAR



Supreme Modular Homes Custom Select Series Ranch

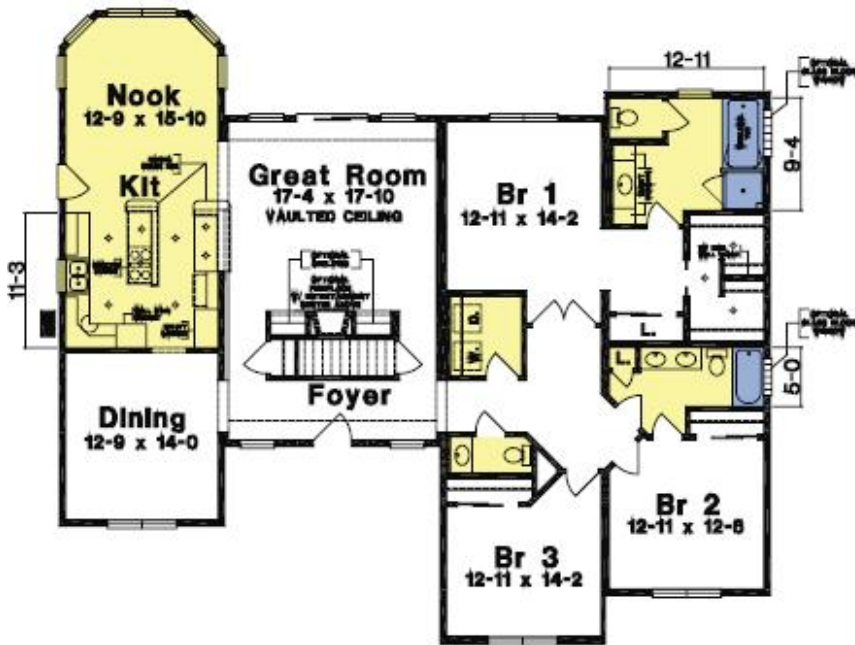
(T) 856-652-2382 (F) 856-652-2489
www.suprememodular.com

SUPREME MODULAR



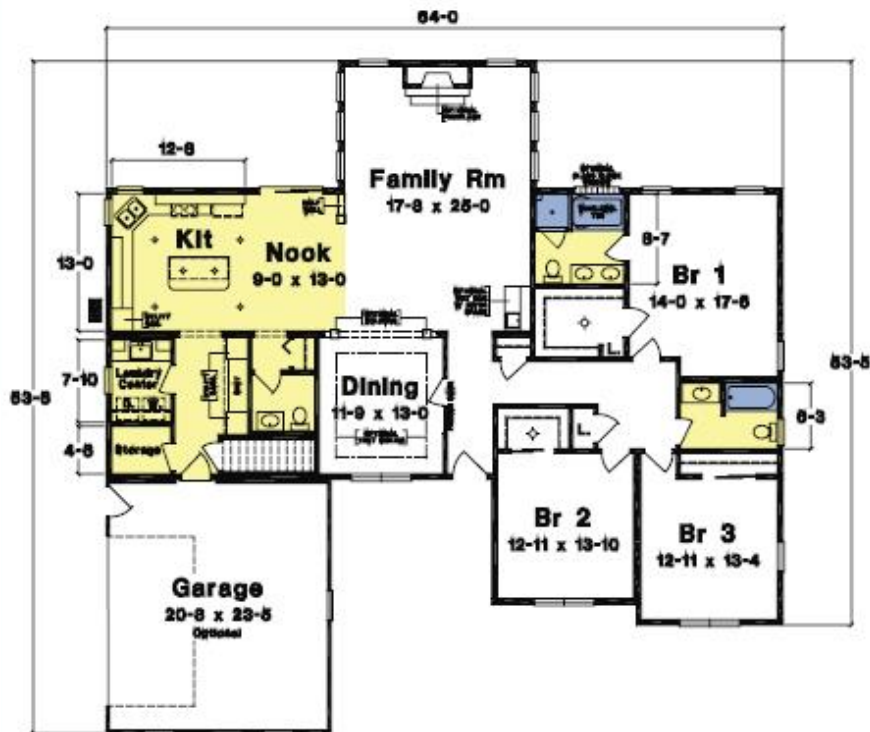
The Parkridge 84'-8" x 45'-0", 2411 sq ft

SUPREME MODULAR



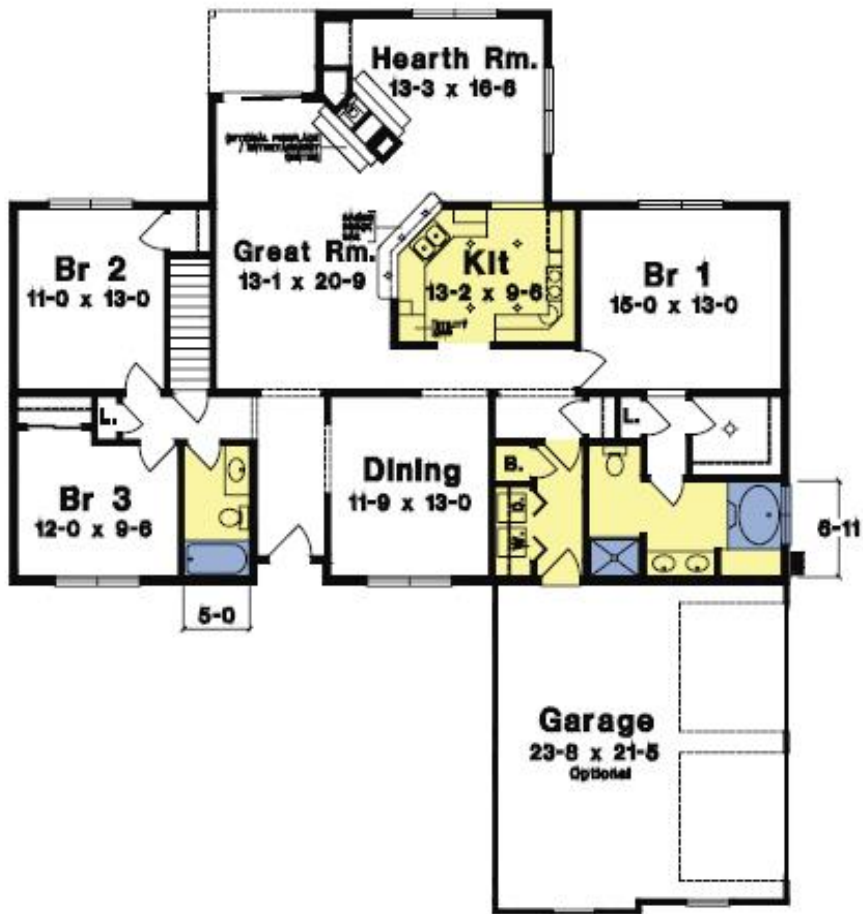
Woodland Park 59'-6" x 52'-9", 2269 sq ft

SUPREME MODULAR



Madison Park 63'-6" x 64'-0", 2440 sq ft

SUPREME MODULAR

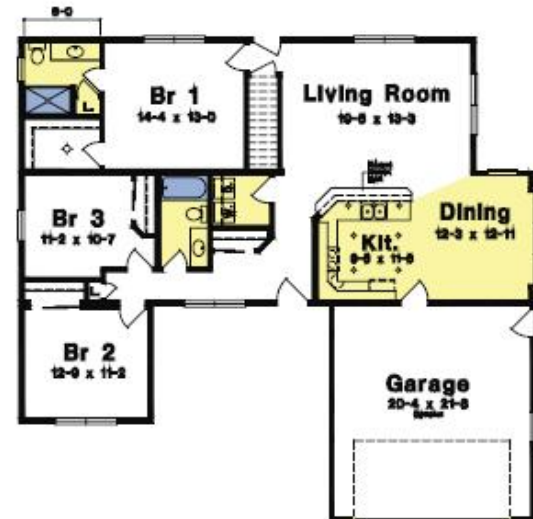


SUPREME MODULAR

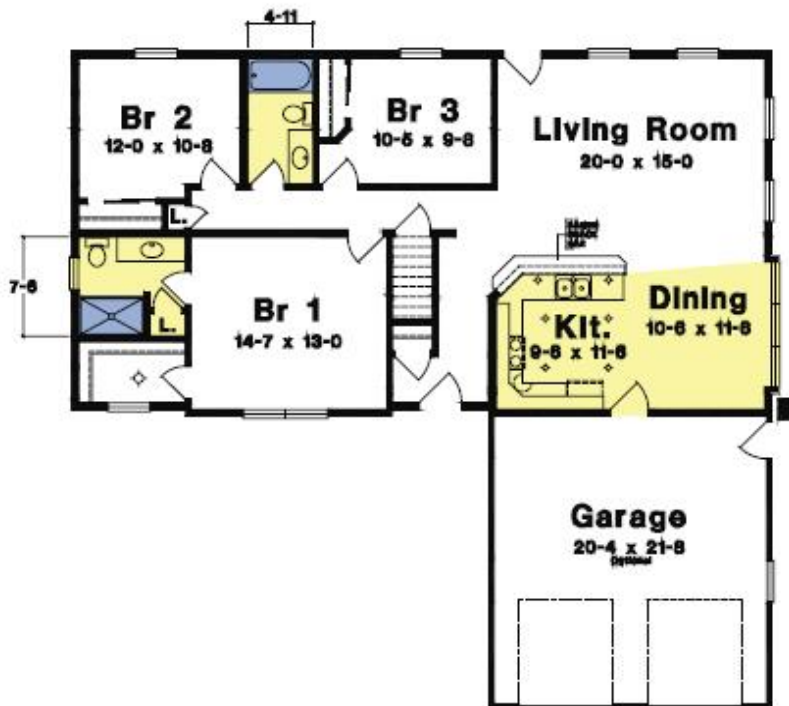


The Christina 51'-0" x 54'-3", 1856 sq ft

The Carolyn 27'-6" x 47'-0"/53'-0", 1540 sq ft

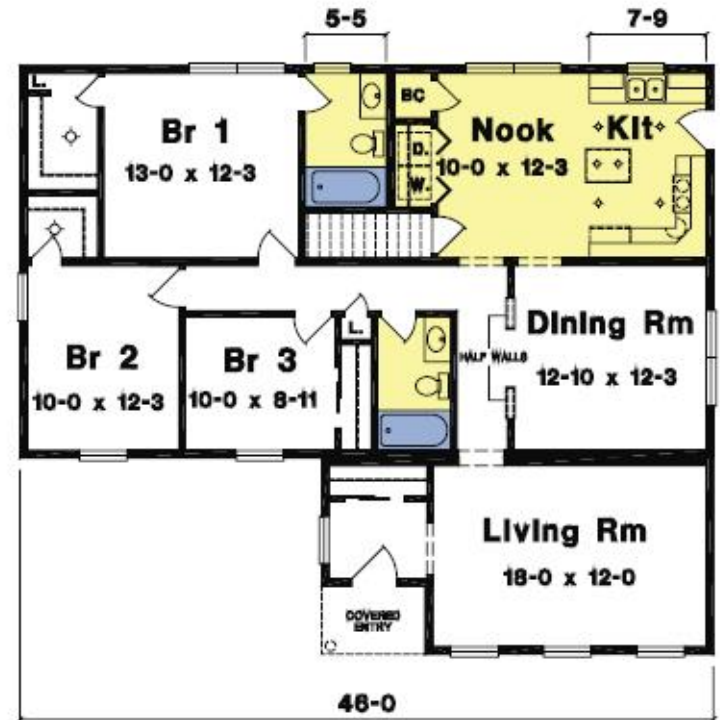


SUPREME MODULAR



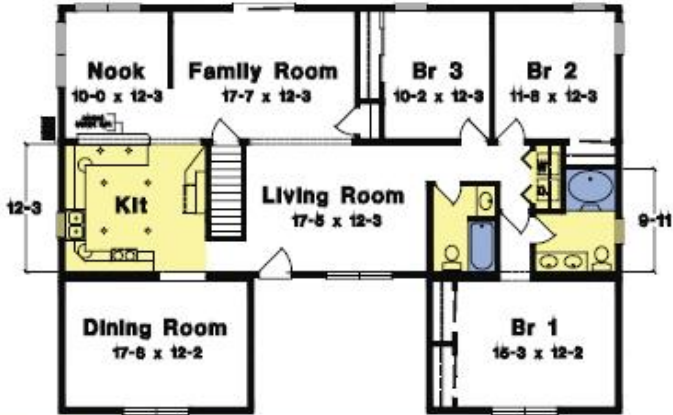
The Pineburst 27'-6" x 52'-0", 1417 sq ft

SUPREME MODULAR

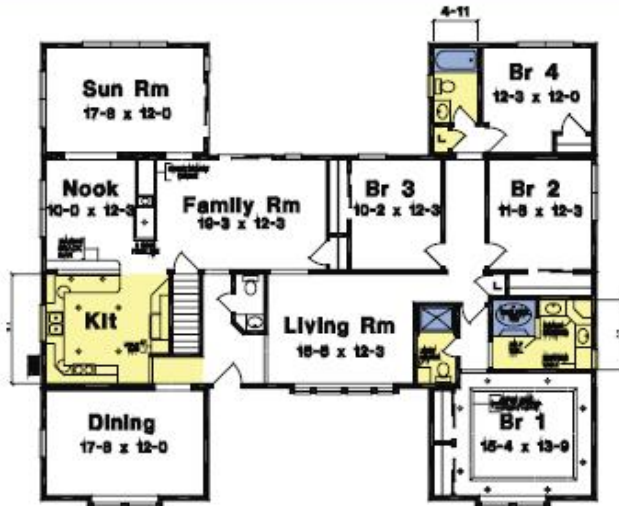


The Washburn II 26'-0"/39'-0" x 46'-0", 1500 sq ft

SUPREME MODULAR

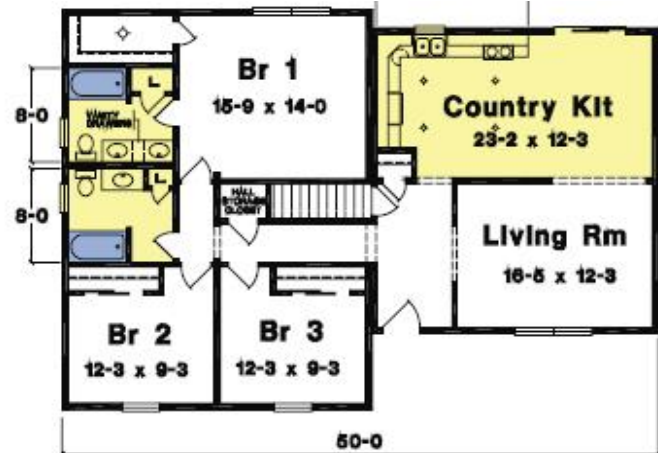


The Dalton II 39'-0" x 54'-0", 1889 sq ft

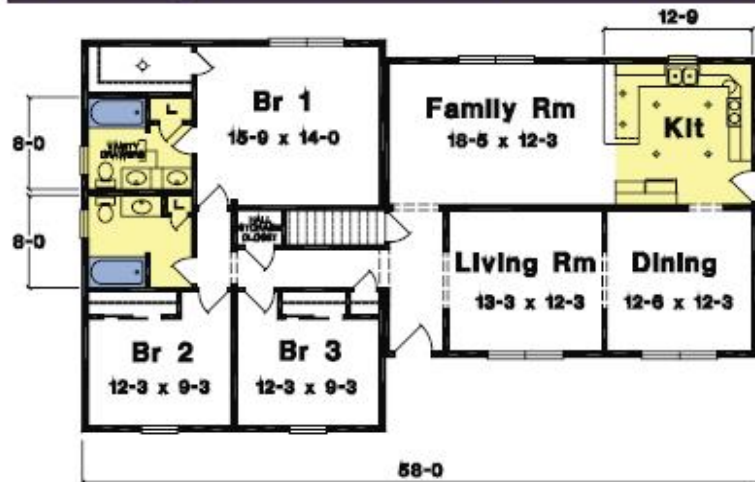


The Waverly II 51'-2" x 62'-0", 2582 sq ft

SUPREME MODULAR

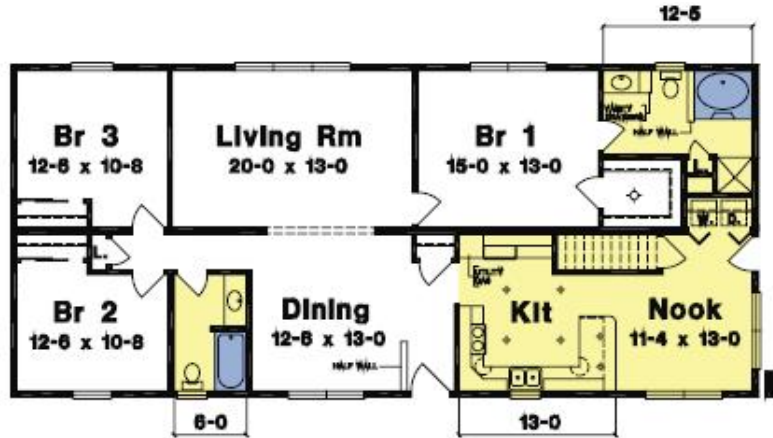


New Oxford I 26'-0" x 34'-0" / 26'-0" x 24'-0", 1508 sq ft

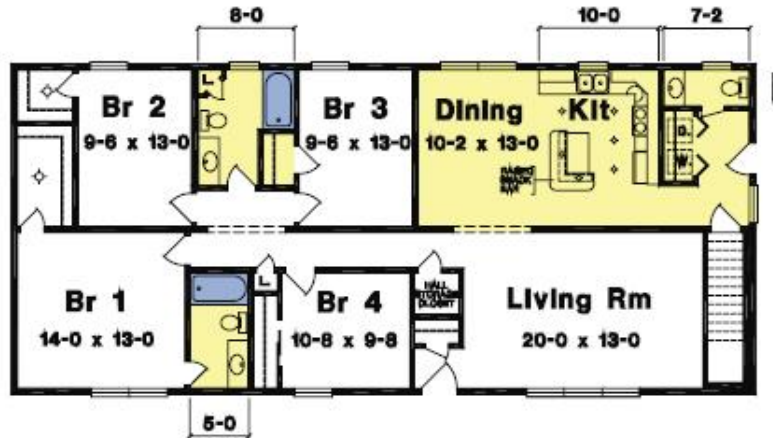


New Oxford II 26'-0" x 34'-0" / 26'-0" x 32'-0", 1716 sq ft

SUPREME MODULAR

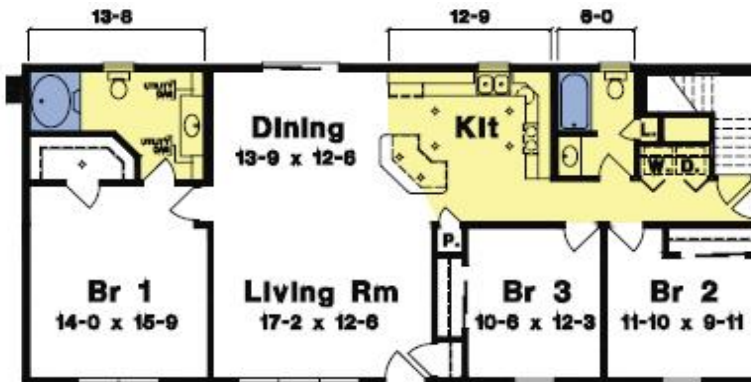


The Livingston III 27'-6" x 62'-0", 1705 sq ft

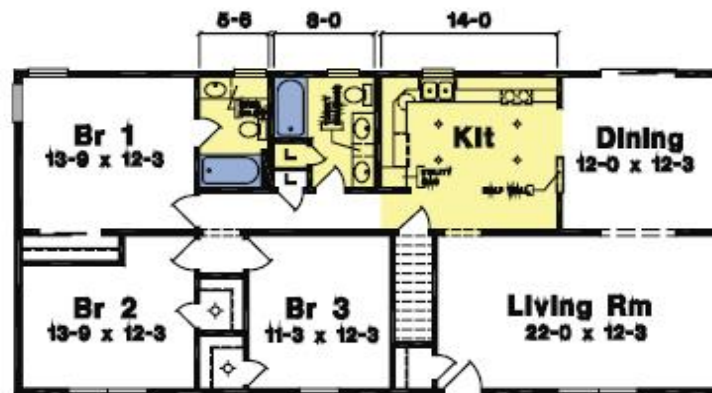


The Rochester III 27'-6" x 62'-0", 1705 sq ft

SUPREME MODULAR

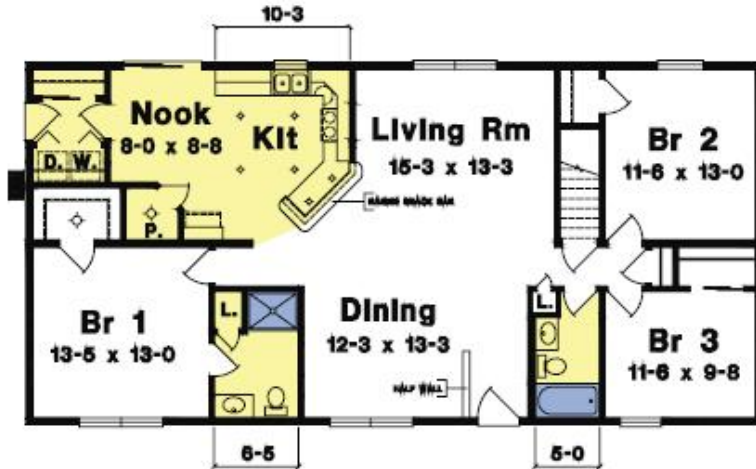


The Ashley II 26'-0" x 58'-0", 1508 sq ft

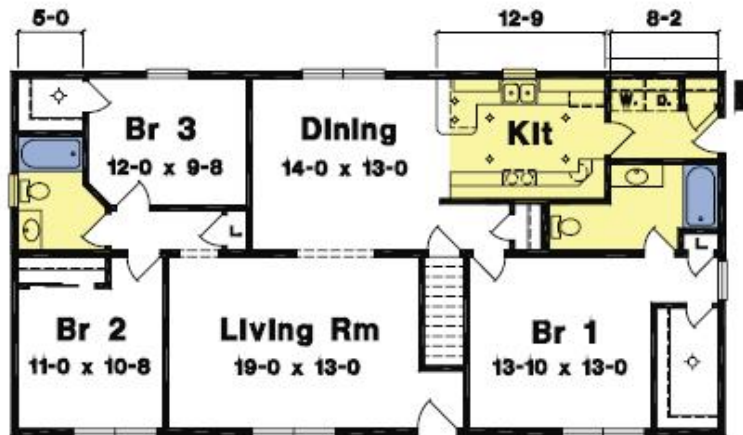


The Mansfield 26'-0" x 56'-0", 1456 sq ft

SUPREME MODULAR



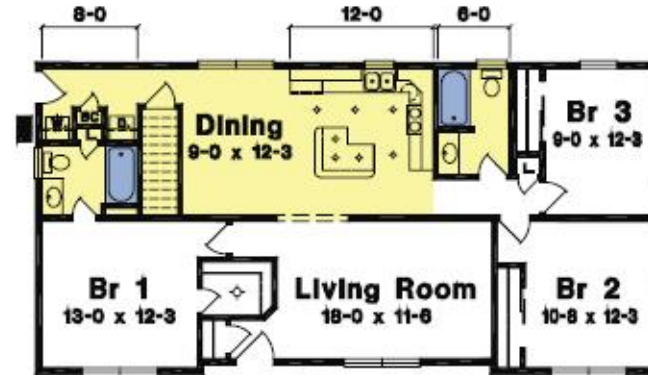
The Somerset II 27'-6" x 56'-0", 1540 sq ft



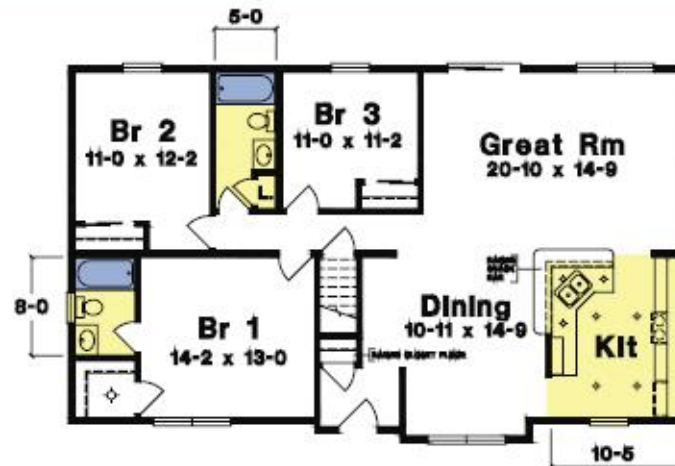
The Elmview III 27'-6" x 54'-0", 1485 sq ft



SUPREME MODULAR

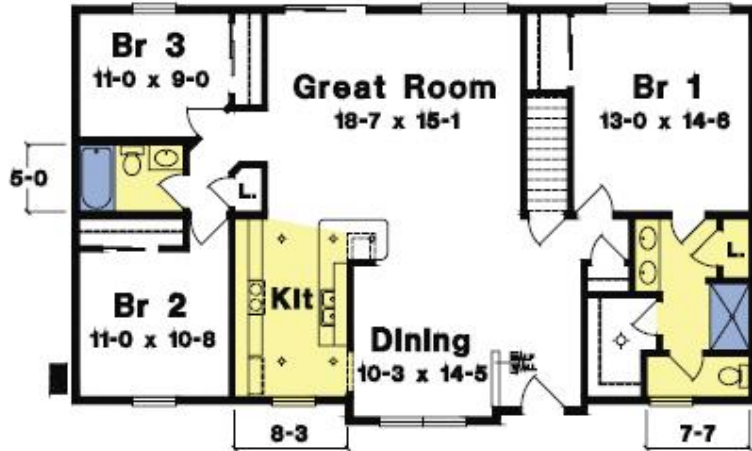


The Springfield II 26'-0" x 52'-0", 1352 sq ft

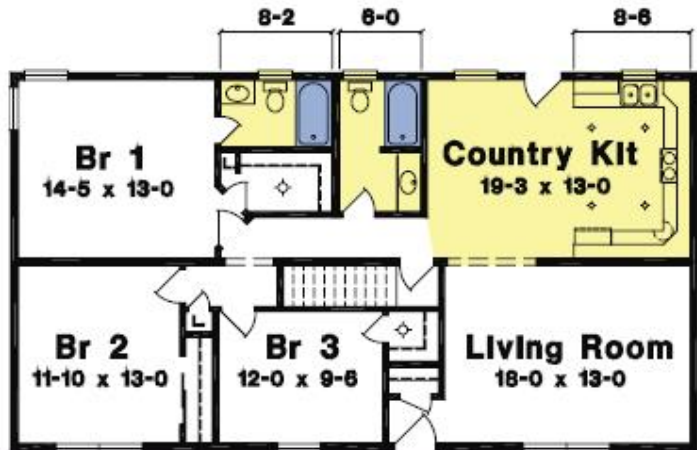


The Vernon I 30'-6" x 50'-0", 1471 sq ft

SUPREME MODULAR



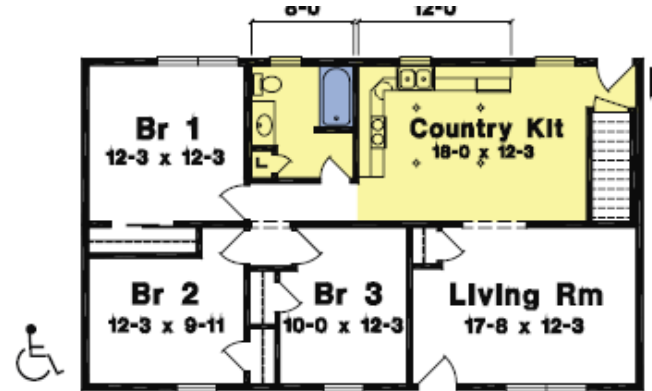
The Amburst I 30'-6" x 50'-0", 1472 sq ft



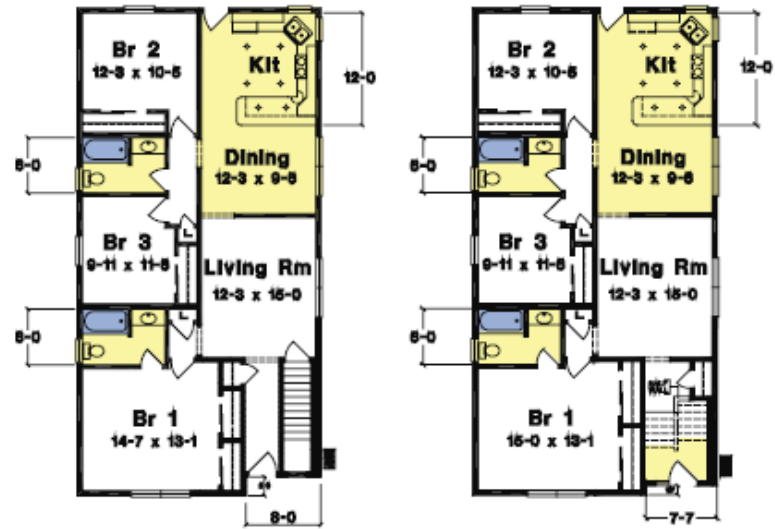
The Briardale III 27'-6" x 50'-0", 1375 sq ft



SUPREME MODULAR

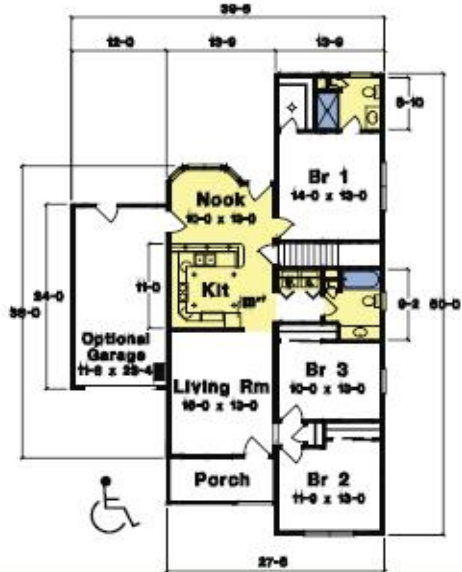


The Beechdale I 26'-0" x 42'-0", 1092 sq ft

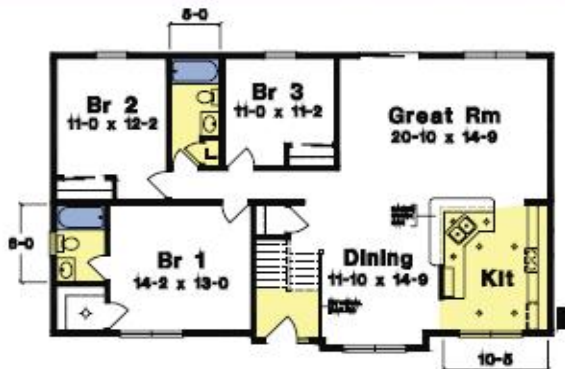


New Huntington II 26'-0" x 52'-0", 1344 sq ft

SUPREME MODULAR



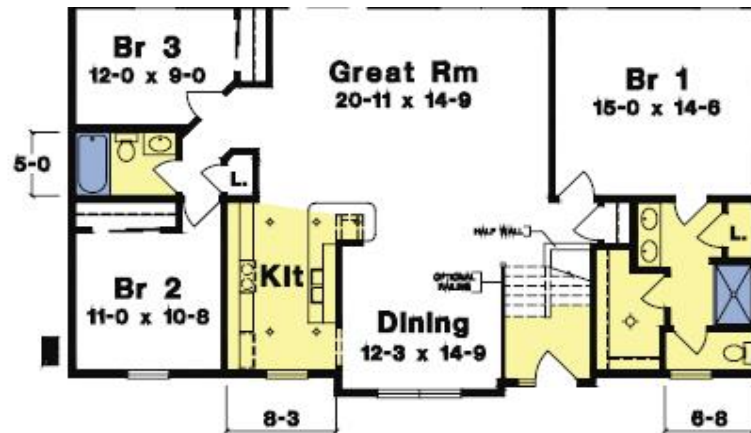
The Savannah 27'-6" x 38'-0" / 60'-0", 1348 sq ft



The Winchester II 30'-6" x 50'-0", 1471 sq ft



SUPREME MODULAR

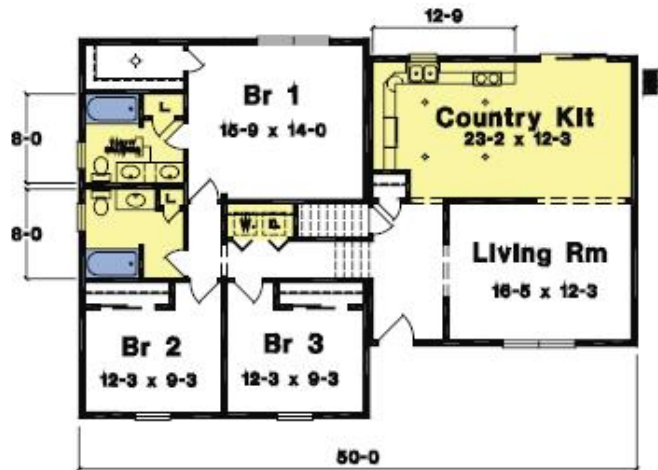


The Bradley 30'-6" x 52'-0", 1522 sq ft



The Birchwood I 27'-6" x 54'-0", 1485 sq ft

SUPREME MODULAR



New Oxford Split Level I 26'-0" x 34'-0" / 24'-0" 1508 sq ft



New Oxford Split Level IV 26'-0" x 42'-0" / 46'-0", 26'-0" x 24'-0" 1768 sq ft

SUPREME MODULAR

Gable End Family Room Options

Rear Family Room Options



Gable End Family Room Option 2A
13'9" x 23'-8", 325 sq ft



Gable End Family Room Option 2B
13'9" x 23'-8", 325 sq ft



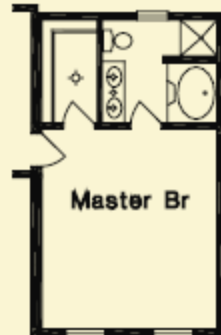
Gable End Family Room Option 2C
13'9" x 23'-8", 325 sq ft



Gable End Family Room Option 2D
13'9" x 23'-8", 325 sq ft



Gable End Family Room Option 2E
13'9" x 23'-8", 325 sq ft



Gable End Master Bedroom Option
15'0" x 26'-0", 390 sq ft



Family Room Option 1A
11'10" x 23'-8", 280 sq ft



Family Room Option 1C
11'10" x 23'-8", 280 sq ft



Family Room Option 1B
11'10" x 23'-8", 280 sq ft



Family Room Option 1D
23'8" x 24'-0", 568 sq ft