



# **SUPREME MODULAR**

---

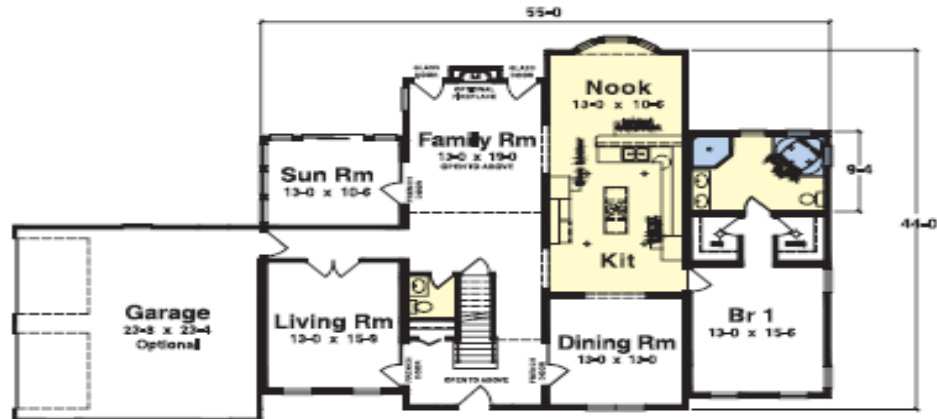
Making your dreams an everyday reality ...



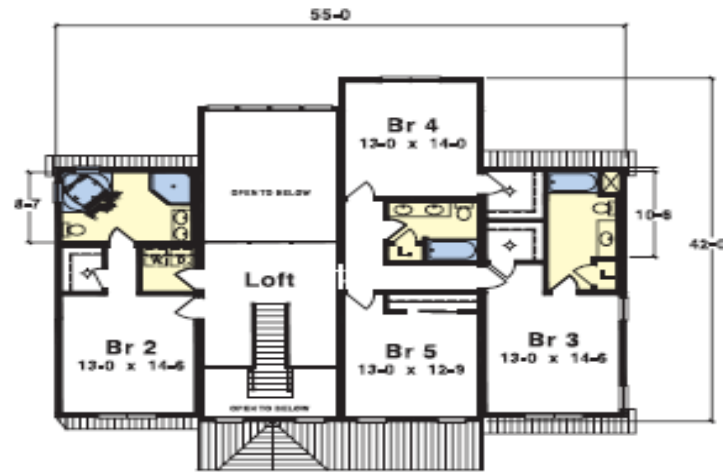
## **Supreme Modular Homes Custom Select Series Two Story**

(T) 856-652-2382 (F) 856-652-2489  
[www.suprememodular.com](http://www.suprememodular.com)

# SUPREME MODULAR

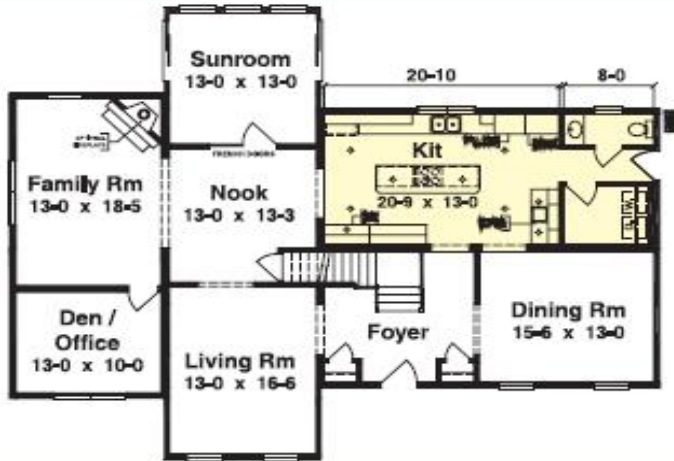


*Stockbridge 1st Floor 55'-0" x 44'-0", 4006 sq ft*

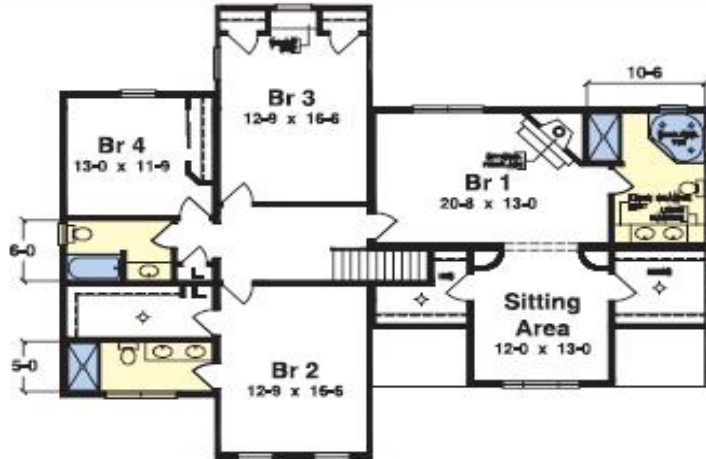


*Stockbridge 2nd Floor*

# SUPREME MODULAR



*Salem 1st Floor 44'-6" x 57'-6", 3465 sq ft*

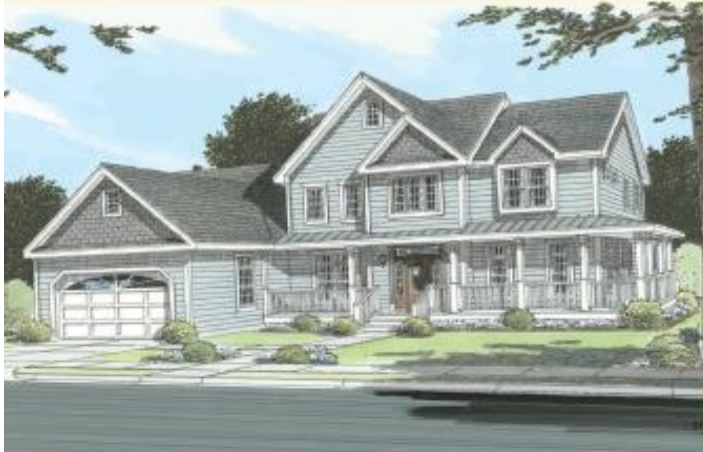


*Salem 2nd Floor*

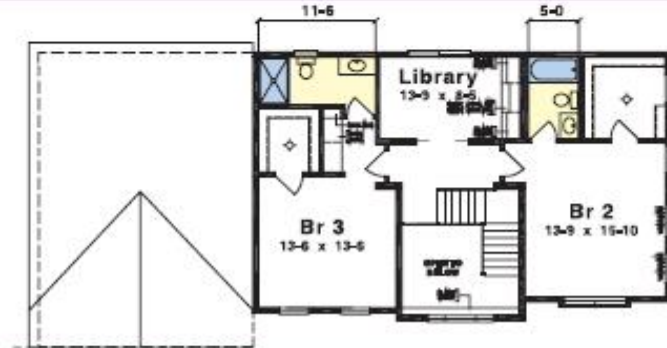




# SUPREME MODULAR

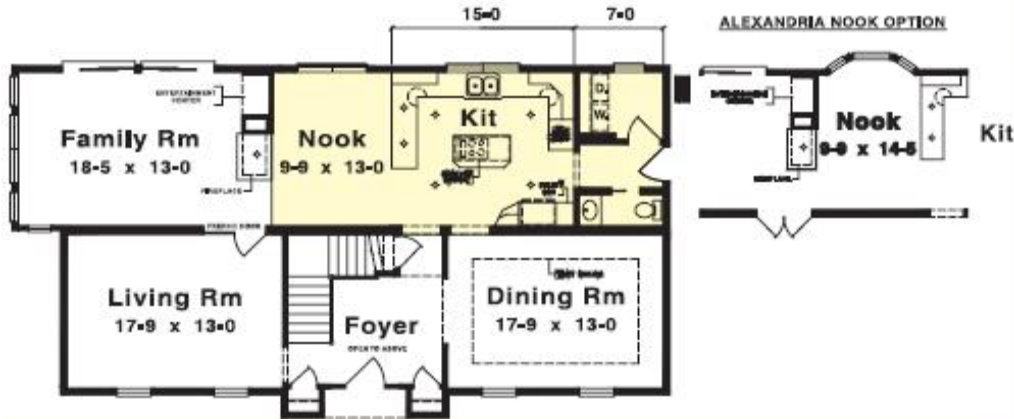


*Charlotte 1st Floor 39'-6" x 64'-0", 2840 sq ft*

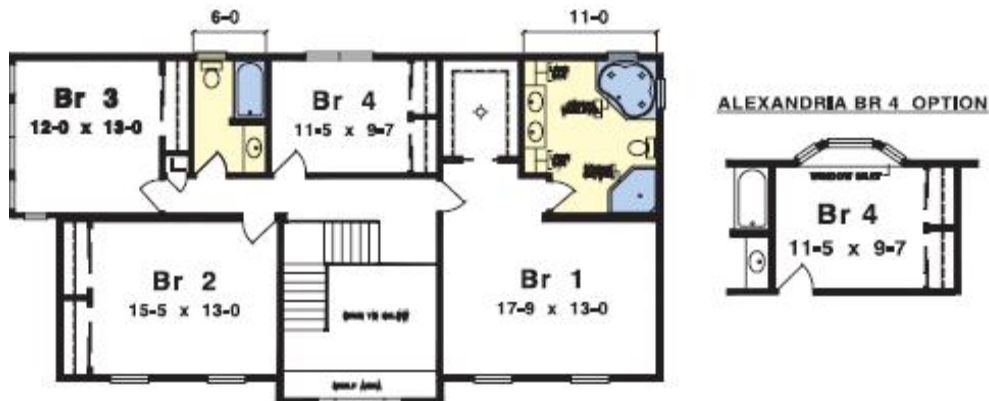


*Charlotte 2nd Floor*

# SUPREME MODULAR

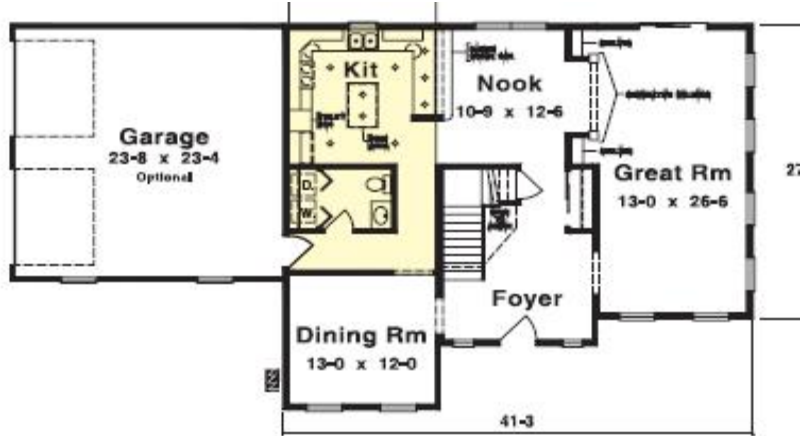


*Alexandria 1st Floor 27'-8" x 50'/54'-0", 2860 sq ft*



*Alexandria 2nd Floor*

# SUPREME MODULAR



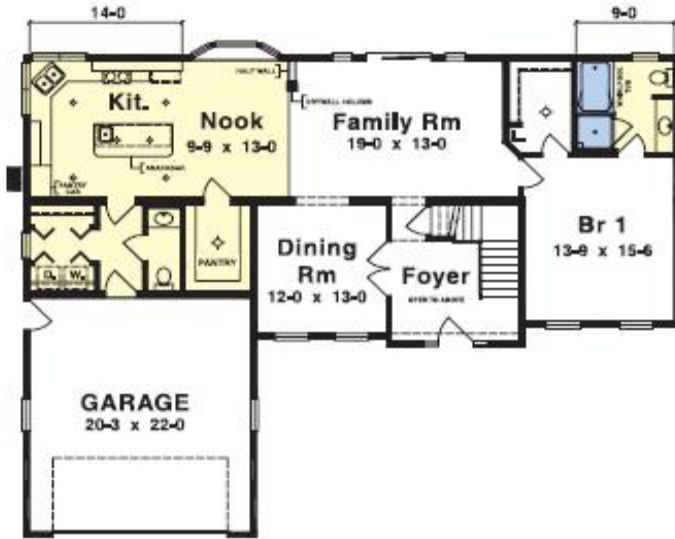
*Arlington 1st Floor 41'-3" x 36'-0", 2572 sq ft*



*Arlington 2nd Floor*



# SUPREME MODULAR



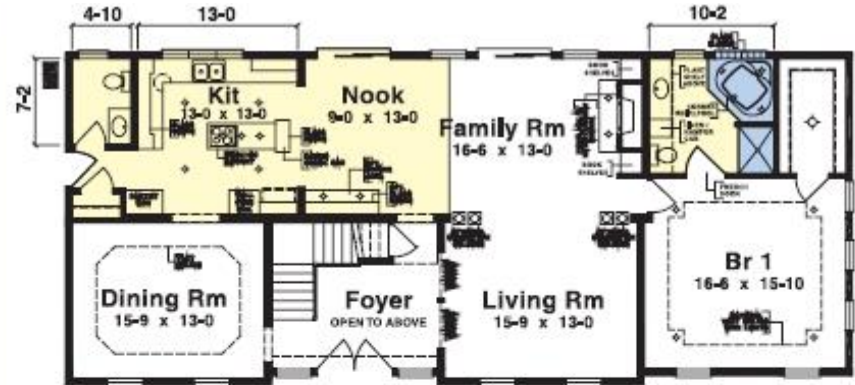
**Lewisburg 1st Floor 38'-9" x 60'-0"/38'-9", 2542 sq ft**



**Lewisburg 2nd Floor**

# SUPREME MODULAR

**SIGNATURE  
SERIES**



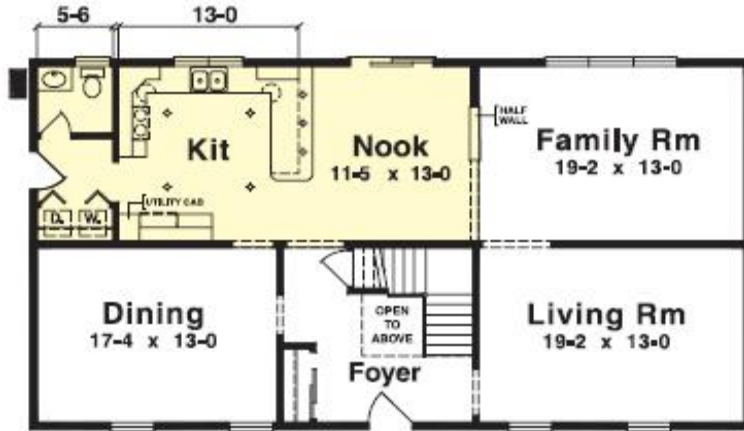
*Lincoln Park 1st Floor 27'-6"/26'-9" x 64'-0"/47'-0", 3020 sq ft*



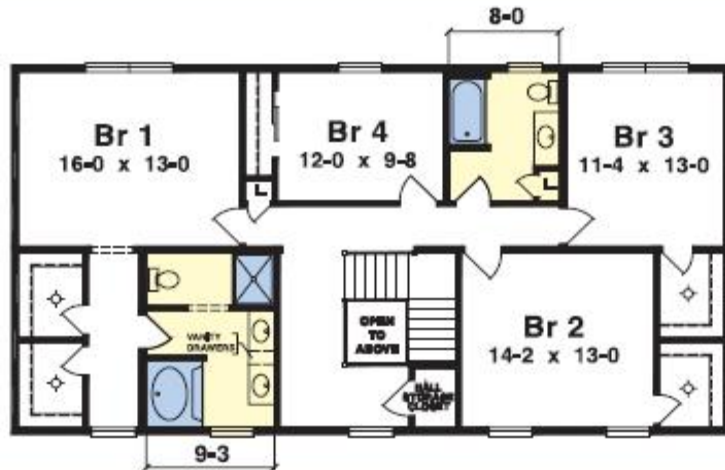
*Lincoln Park 2nd Floor*



# SUPREME MODULAR



*Van Buren 1st Floor 27'-8" x 52'-0", 2860 sq ft*

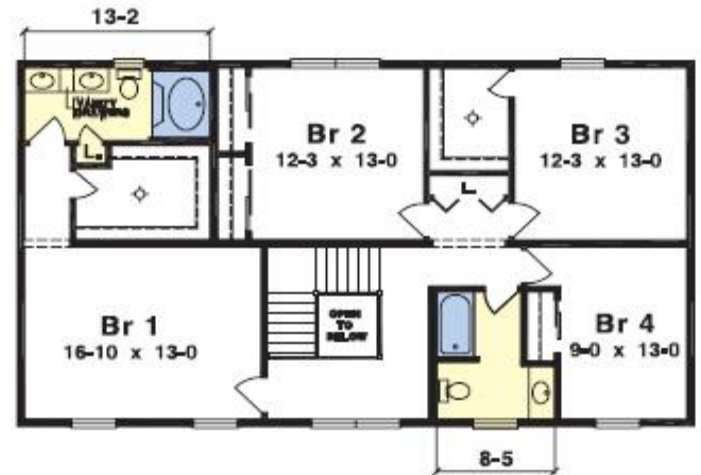


*Van Buren 2nd Floor*

# SUPREME MODULAR

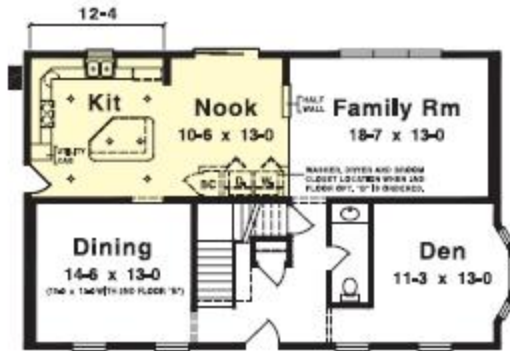


*Fitchburg II 1st Floor 27'-6" x 48'-0", 2640 sq ft*



*Fitchburg II 2nd Floor*

# SUPREME MODULAR



*Montgomery 1st Floor 27'-8" x 44'-0", 2430 sq ft*

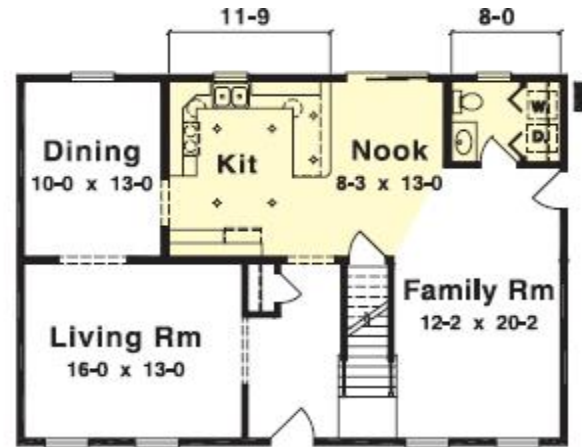


Optional 4th Bedroom Plan

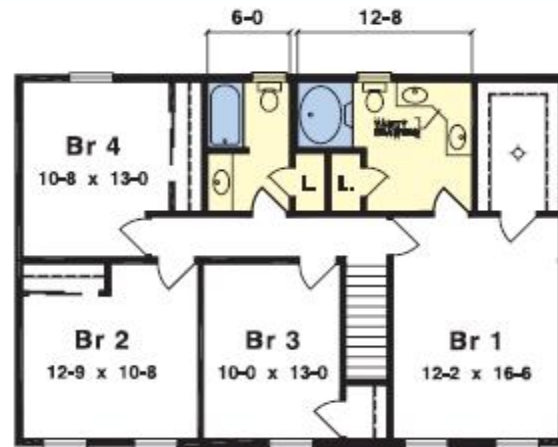
*Montgomery 2nd Floor*



# SUPREME MODULAR

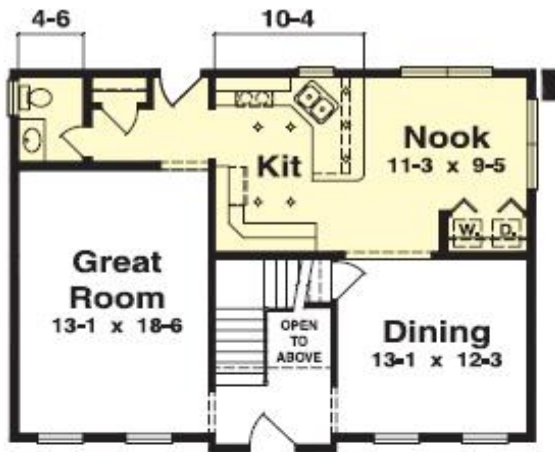


*Bridgeport 1st Floor 27'-6" x 40'-0", 2200 sq ft*

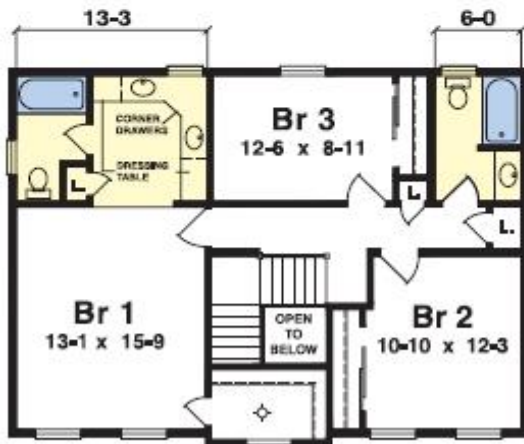


*Bridgeport 2nd Floor*

# SUPREME MODULAR



*New Charleston 1st Floor 26'-0" x 36'-0", 1872 sq ft*

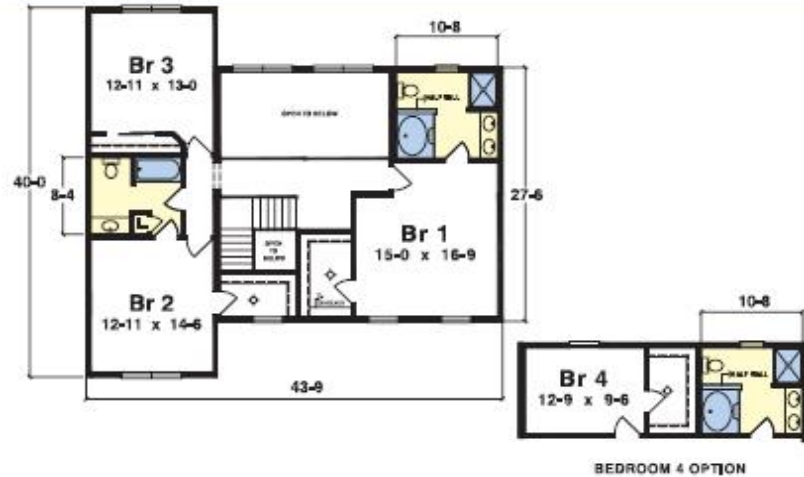


*New Charleston 2nd Floor*

# SUPREME MODULAR



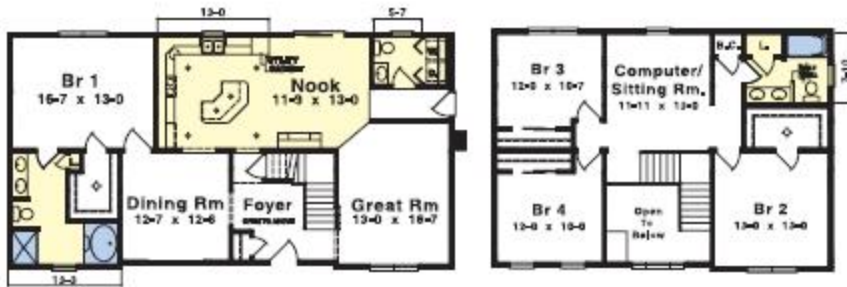
*Summit 1st Floor 41'-6" x 43'-9", 2761 sq ft*



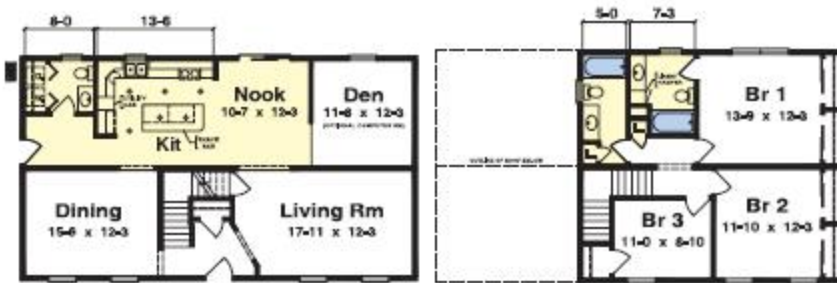
*Summit 2nd Floor*



# SUPREME MODULAR



*Ashtree II* 27'-6" x 52'-0", 2445 sq ft

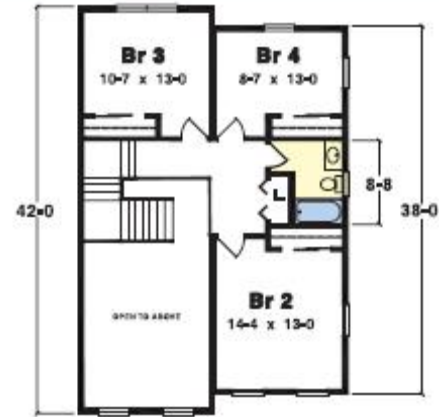


*Rockport* 26'-0" x 30'/40'-0", 1820 sq ft

# SUPREME MODULAR

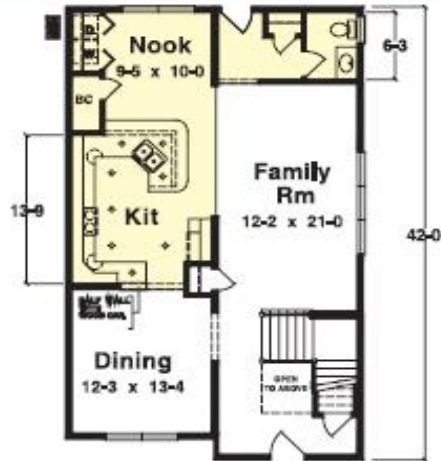


*Bedford 1st Floor 27'-8" x 38'-0" x 42'-0", 2351 sq ft*

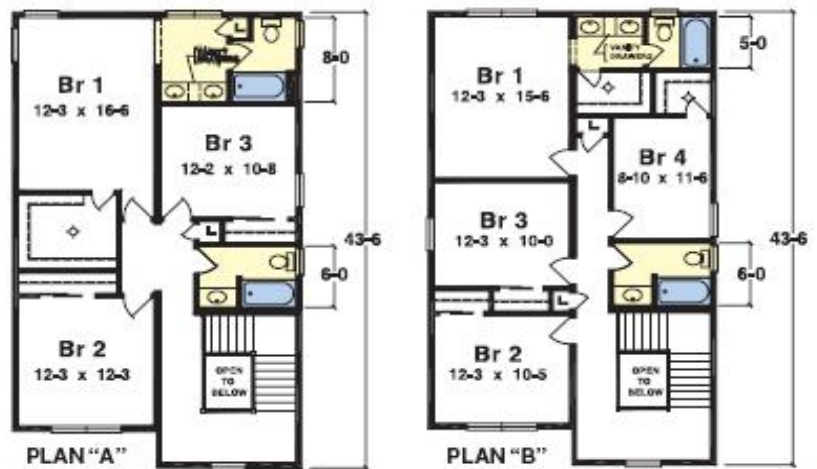


*Bedford 2nd Floor*

# SUPREME MODULAR



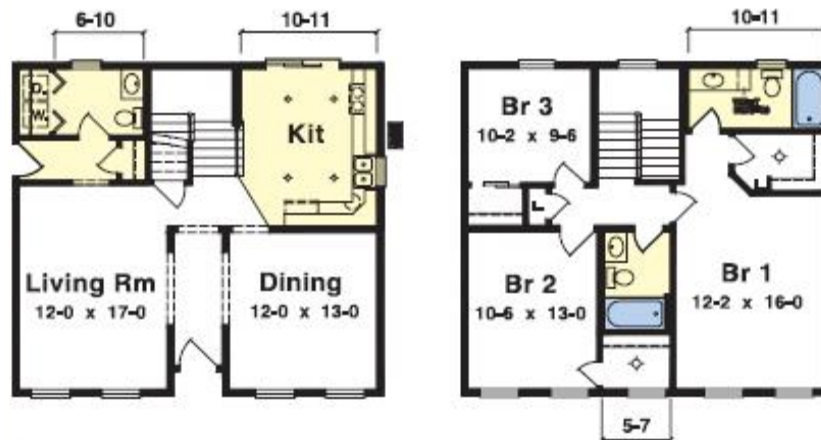
**Lenox 1st Floor 26'-0" x 40'/42'-0", 2132 sq ft**



**Lenox 2nd Floor**



# SUPREME MODULAR



*Jefferson I* 27'-6" x 30'-0", 1650 sq ft

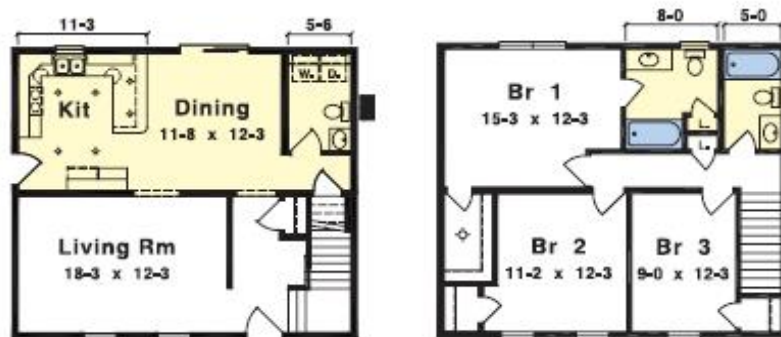


*Jefferson II* 27'-6" x 32'-0", 1760 sq ft

# SUPREME MODULAR



*Maplevue* 27'-6" x 29'-0", 1609 sq ft



*Albany* 26'-0" x 30'-0", 1560 sq ft