

SUPREME MODULAR

Vacation Homes



Supreme Modular Homes Vacation Homes

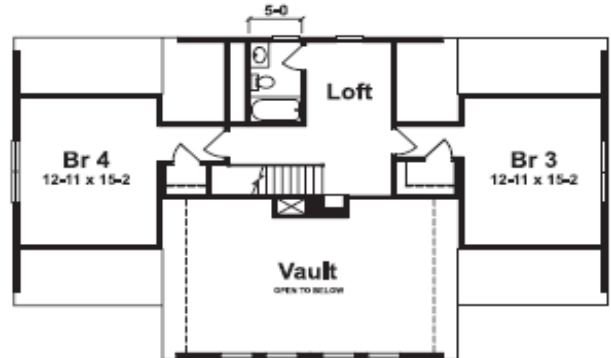
SUPREME MODULAR



WINTERPARK RENDERING



1ST FLOOR 33'-0" x 55'-0" 2397 Sq. Ft.



2ND FLOOR

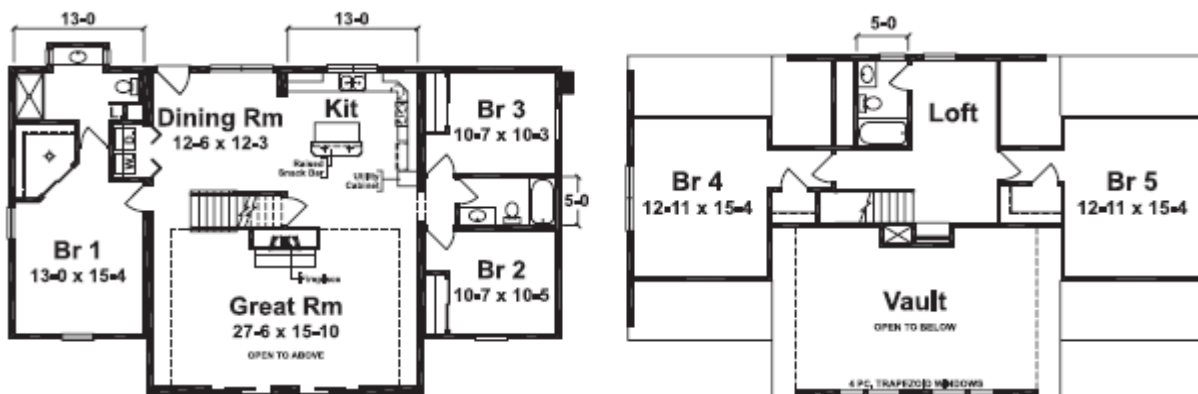
THE WINTERPARK

The Winterpark is truly a great home for both lakeside or mountain retreat lifestyles. This home provides 2 stories of living space along with Great Room feature wall of windows that can provide spectacular views. The great room windows are standard along with full glass doors that exit each side of the Great Room. The exterior is highlighted by optional log siding and elongated first floor windows with grills. The metal roof, chimney box with stone accent and deck are site provided and installed.

SUPREME MODULAR



SIERRA RENDERING

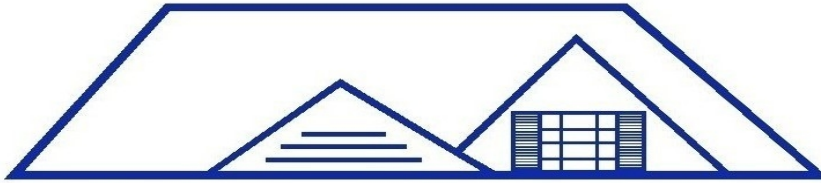


1ST FLOOR 33'-0" x 55'-0" 1686 Sq. Ft.

SUGGESTED 2ND FLOOR 711 Sq. Ft.

THE SIERRA

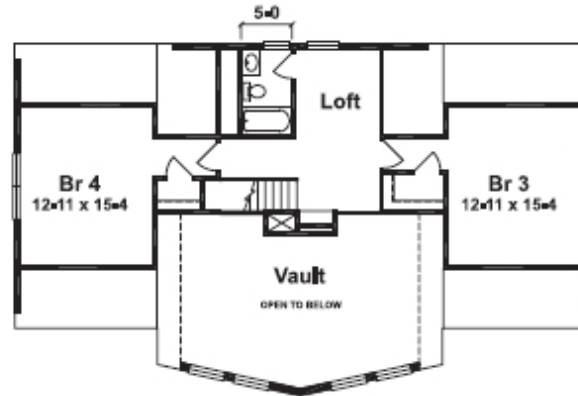
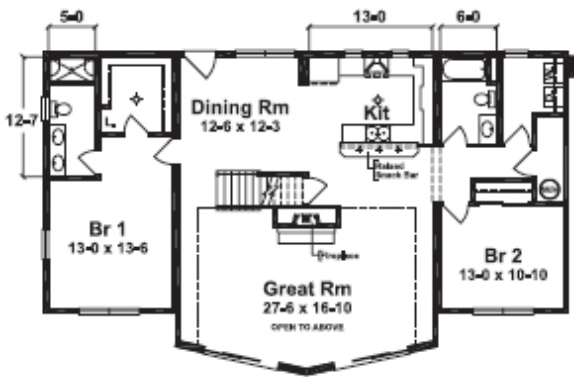
The Sierra first floor provides family style living complimented by a vaulted ceiling in the Great Room, dual open rail stair, fireplace with 2 story chimney box and trapezoid windows that provide natural light to the Great Room and second floor loft. The exterior features are complimented by optional log siding, terratone windows and terratone soffit and fascia. The metal roof, stone chimney box and deck are site provided and installed.



SUPREME MODULAR



CASCADE RENDERING



1ST FLOOR 34'-0" x 55'-0" 1685 Sq. Ft.

SUGGESTED 2ND FLOOR 711 Sq. Ft.

THE CASCADE

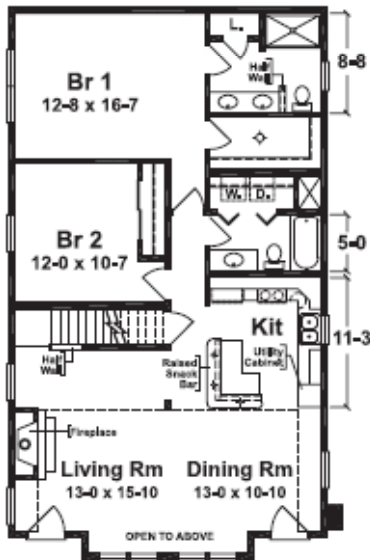
This open floor plan, as shown, is standard with dual railing at stairs on the first floor, fireplace with 2 story chimney box and decorative rangehood as a kitchen backdrop. The plan also includes 8' patio doors at the Great Room. The exterior is highlighted by prow walls and large trapezoid windows that light up the Great Room vault. Optional features include window and patio door grills, plank style shutters and horizontal siding. The chimney with stone is site provided and installed.



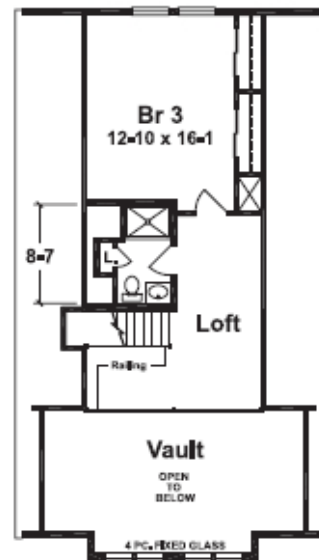
SUPREME MODULAR



LAREDO RENDERING



1ST FLOOR 27'-6" x 48'-0" 1298 Sq. Ft.



SUGGESTED 2ND FLOOR 456 Sq. Ft.

THE LAREDO

The Laredo, as shown, features dual entry full glass doors to the entertaining area of the home. Hanging lights are included as well as the full and half length feature windows in the vault area. The stone work and decorative ridge detail are site provided and installed.

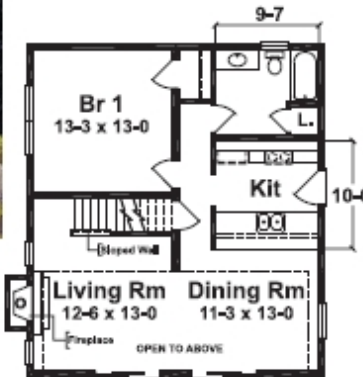
SUPREME MODULAR



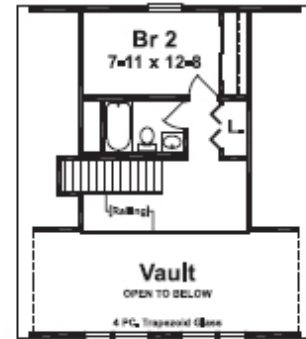
OZARK C RENDERING

THE OZARK A

The Ozark "A" standards include trapezoid windows in the vaulted area of the living and dining rooms, a fireplace and (2) 6' patio doors. Note: Fireplace as shown is site installed, additionally there are no length extensions available on the Ozark "A". The elevation, as shown, pictures a prow overhang, which is optional on the Ozark "A".



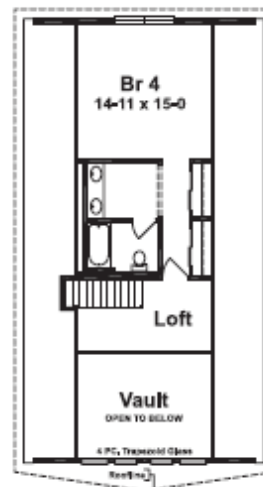
1ST FLOOR
27'-6" x 31'-0"
853 Sq. Ft.



SUGGESTED 2ND FLOOR
345 Sq. Ft.



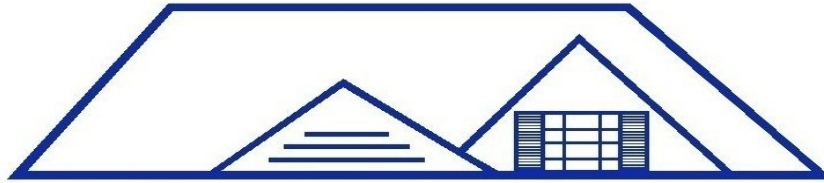
1ST FLOOR 26'-0" x 48'-0" 1248 Sq. Ft.



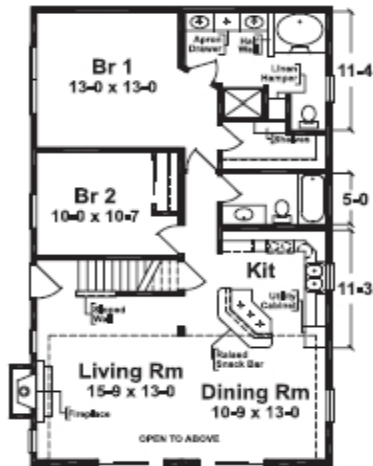
2ND FLOOR

THE OZARK B

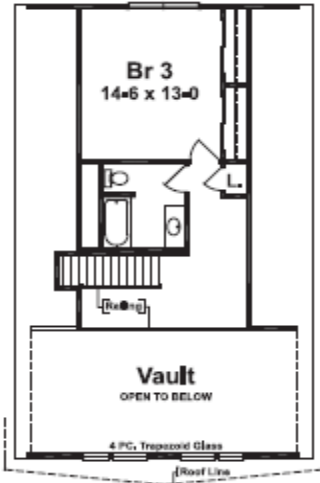
Standards include trapezoid windows in the vaulted area, prow overhang at the entry gable, (2) 6' patio doors and fireplace in the living room.



SUPREME MODULAR



1ST FLOOR 27'-6" x 44'-0" 1210 Sq. Ft.



SUGGESTED 2ND FLOOR 511 Sq. Ft.

THE OZARK C

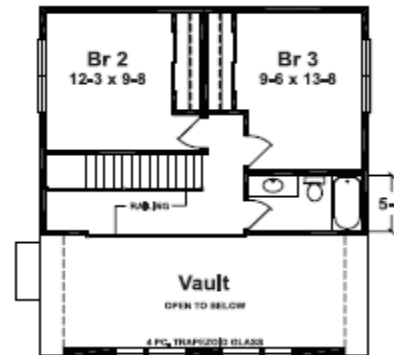
As shown, standard features include front gable prow overhangs, trapezoid windows in the vaulted area of the living room and dining rooms along with a fireplace. The kitchen includes a raised snack bar for casual seating. Note: The standard fireplace as shown is site installed.



LAKEVIEW RENDERING



1ST FLOOR 27'-6" x 30'-6" 1392 Sq. Ft.



2ND FLOOR

THE LAKEVIEW

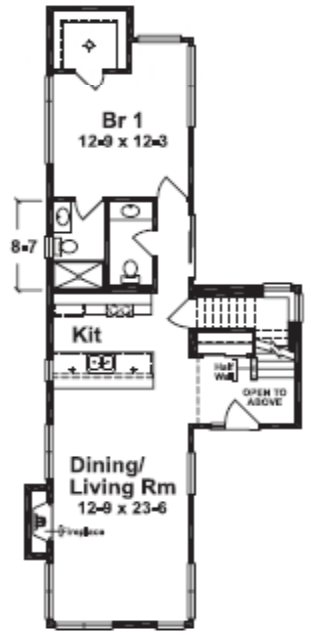
Lakeview standards include trapezoid windows in the vaulted area (2) 6' patio doors and fireplace. The elevation as shown features optional vertical siding and site installed stone on the chimney. Note: The fireplace as shown is site installed, additionally there are no length extensions allowed on the Lakeview



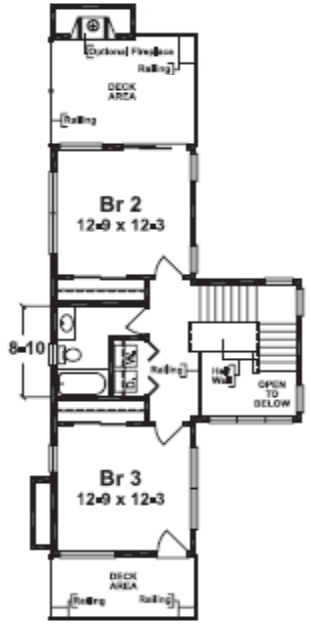
SUPREME MODULAR



BREAKWATER RENDERING



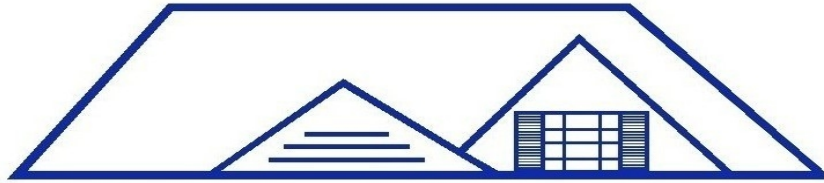
1ST FLOOR 23'-9" x 64'-0" 1994 Sq. Ft.



2ND FLOOR

THE BREAKWATER

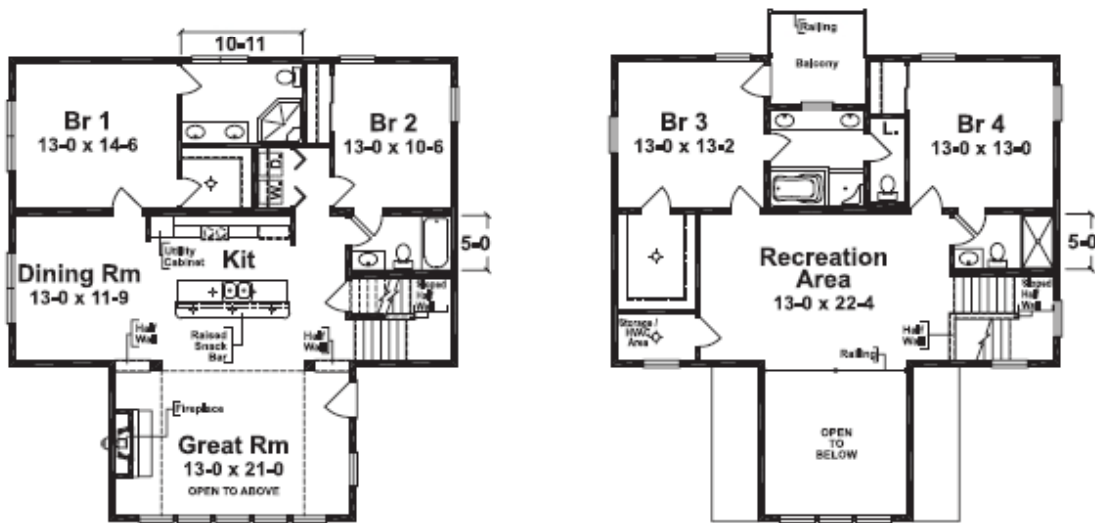
Sleek modern architectural design accent this home. The Breakwaters standard features are many and include casement and awning windows, along with a tall glass front door and sidelight. The standard incorporated decks have rubber roofing applied and the finish deck and railing are provided by the builder on-site. The standard fireplace as shown in the living room is site installed along with the chimney. Optional features include an outdoor fireplace on the rear deck, stone treatments on both fireplace chimneys and decks and railings. Note: There are no length extensions allowed on this plan.



SUPREME MODULAR



ASPEN RENDERING



1ST FLOOR 40'-0" x 41'-3" 2511 Sq. Ft.

2ND FLOOR

THE ASPEN

The Aspen home is truly a second home or vacation destination. This floor plan provides expansive common space on both the first and second floors. The great Room is highlighted by a casement window wall with a vaulted dormer above. This provides tremendous natural light and views from both the Great Room and the second floor Recreation Area. Other compliments of this home include (4) full baths and a private balcony area for the second floor suite. The exterior features include optional elongated windows, window grills, and log siding. The deck, metal roof and stone work are site provided and installed.



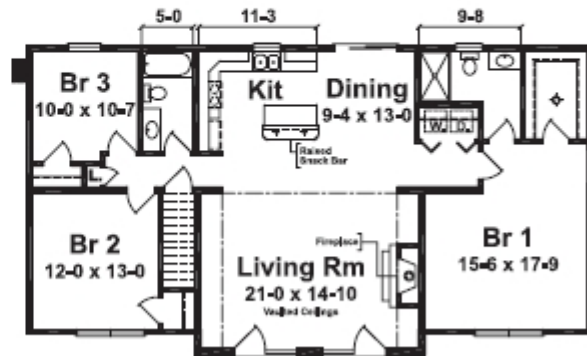
SUPREME MODULAR



MCKINLEY RENDERING

THE MCKINLEY

The McKinley as shown features a vaulted ceiling in the living room along with an open floorplan to the Kitchen/Dining Room. The front elevation includes dual swing style front doors at the living room feature wall along with full size trapezoid glass above. Optional features include the high pitched roof, grills in the windows and doors, and plank style shutters. The deck and chimney box with stone surround are site provided and installed.



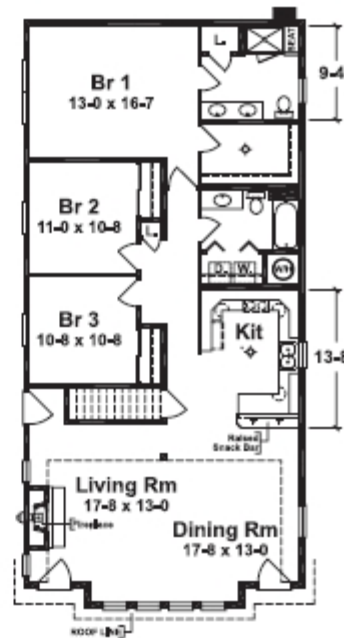
27'-6" / 29'-6" x 56'-0" 1584 Sq. Fr.



ELKHORN RENDERING

THE ELKHORN

The Elkhorn ranch is complimented by the use of casement windows in the Living Room and Dining Room as well as quarter round and half round windows in the vaulted area. The Masterbath features a spacious shower unit with tiled walls and seat. The exterior elevation is standard with full glass exterior doors along with hanging lights. Optional features include a high pitched roof, cedar shakes and decorative korbels.

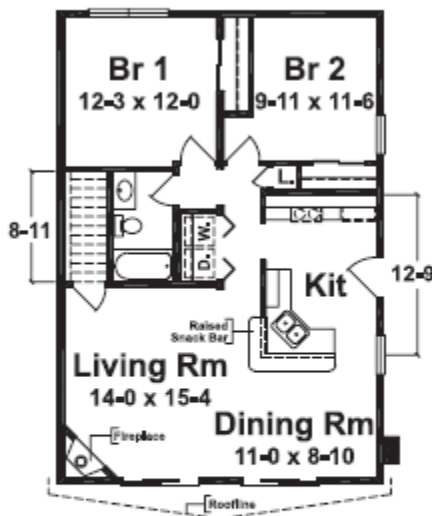


27'-6" x 56'-0" 1576 Sq. Fr.

SUPREME MODULAR

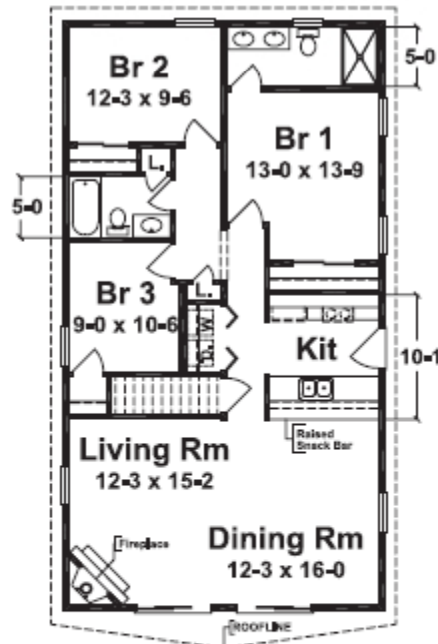


CEDARVIEW RENDERING



26'-0" x 38'-0" 988 Sq. Ft.

THE CEDARVIEW A



26'-0" x 48'-0" 1248 Sq. Ft.

THE CEDARVIEW B

Standard features include a Gable Prow at the Living Room and Dining Room entry. Along with two (2) 6' patio doors and a fireplace. Flat 8' ceilings are standard throughout. The elevation as shown features an extended porch and deck provided by the builder at site. Artificially