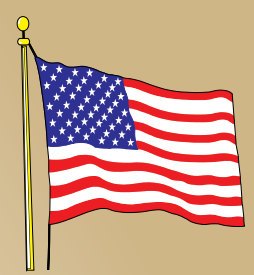


Building  
**AMERICA'S**  
Future... Today!



Supreme Modular  
3040 White Horse Pike  
Hammonton, NJ 08037

**Two-Story**



Made in USA

# BELMONTE



Supreme Modular  
www.suprememodular.com  
856-652-2382

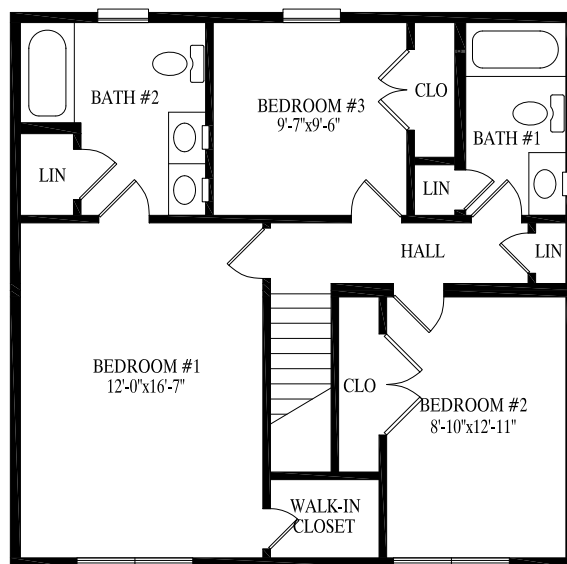
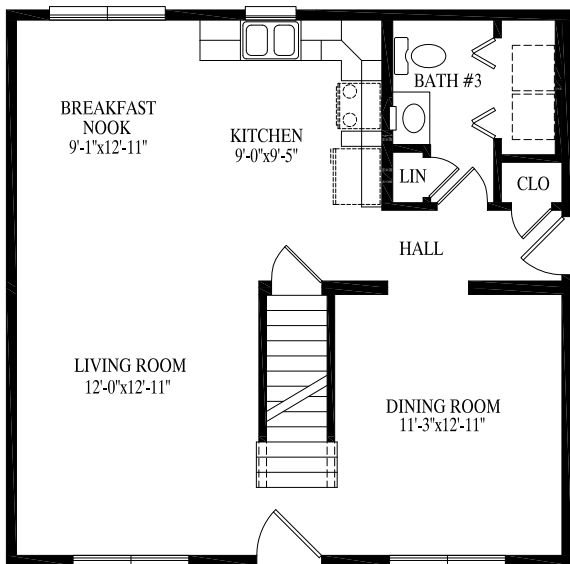


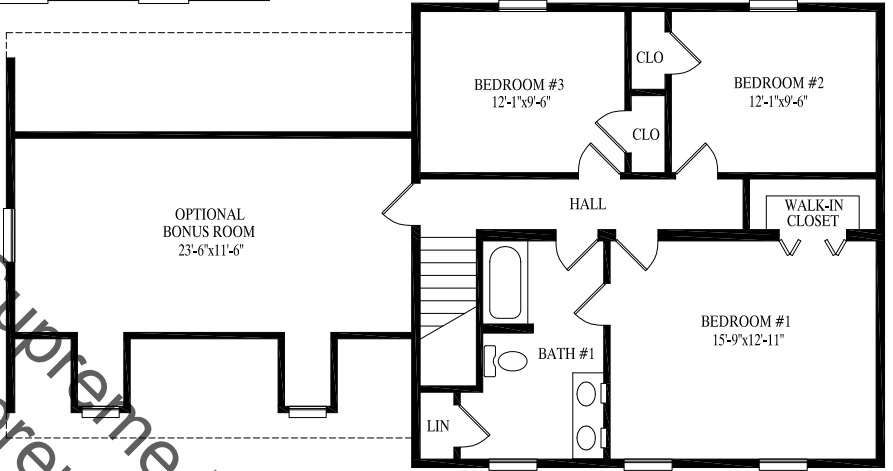
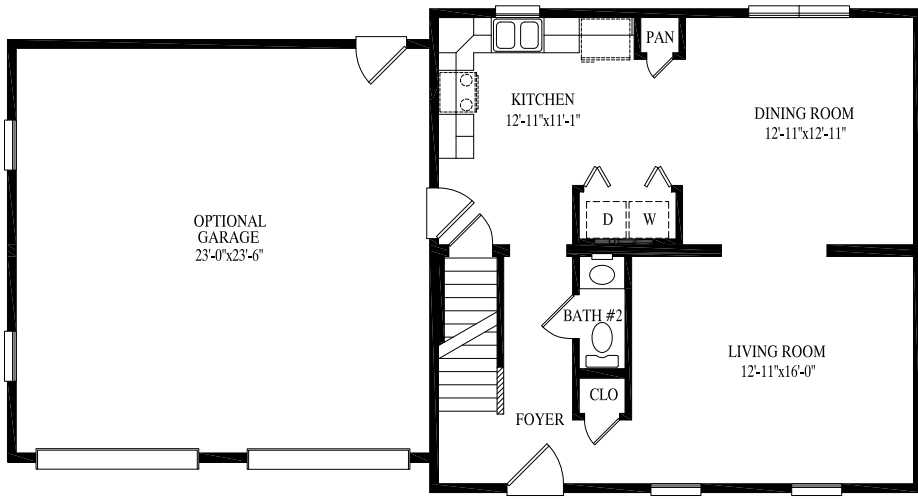
## Belmonte

27' 6" x 28'  
770 sq. ft. 1st floor

27' 6" x 28'  
770 sq. ft. 2nd floor

1540 total sq. ft.





## Waterford

27' 6" x 28'  
770 sq. ft. 1st floor

27' 6" x 28'  
770 sq. ft. 2nd floor

1540 total sq. ft.

www.suprememodular.com  
856-652-2382  
Supreme Modular



# WATERFORD

# KLONDIKE



Supreme Modular  
[www.suprememodular.com](http://www.suprememodular.com)  
 856-652-2682

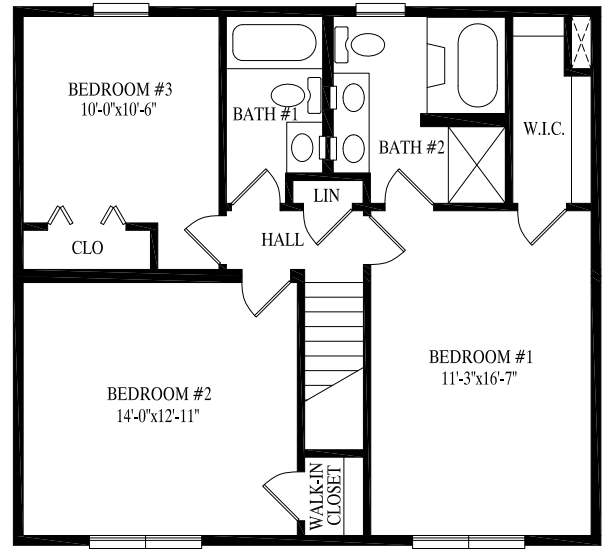
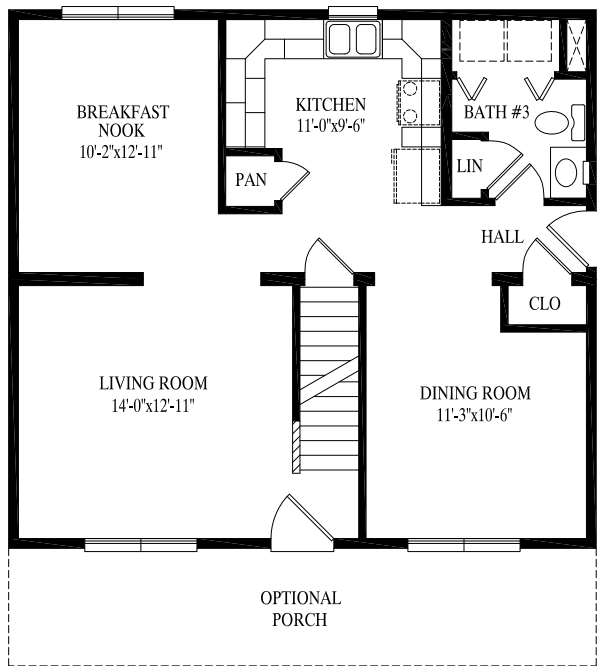


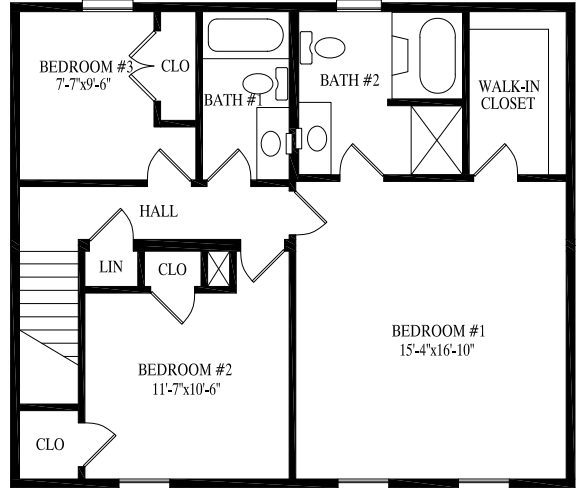
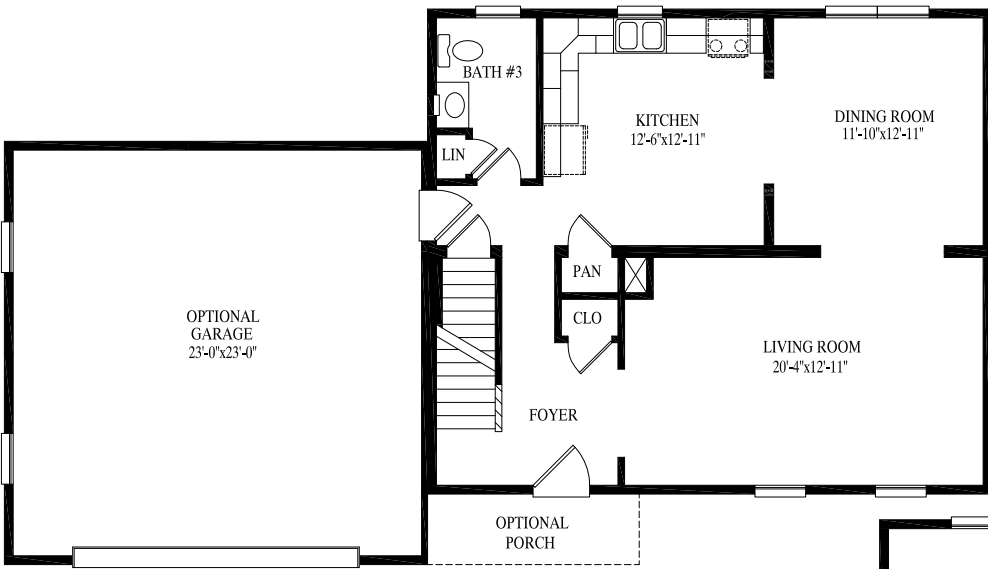
## Klondike

27' 6" x 30'  
 825 sq. ft. 1st floor

27' 6" x 30'  
 825 sq. ft. 2nd floor

1650 total sq. ft.





## Washington

27' 6" x 32'  
880 sq. ft. 1st floor

27' 6" x 32'  
880 sq. ft. 2nd floor

1760 total sq. ft.

www.suprememodular.com  
856-652-2382  
Supreme Modular



# WASHINGTON

# KINGSLEY

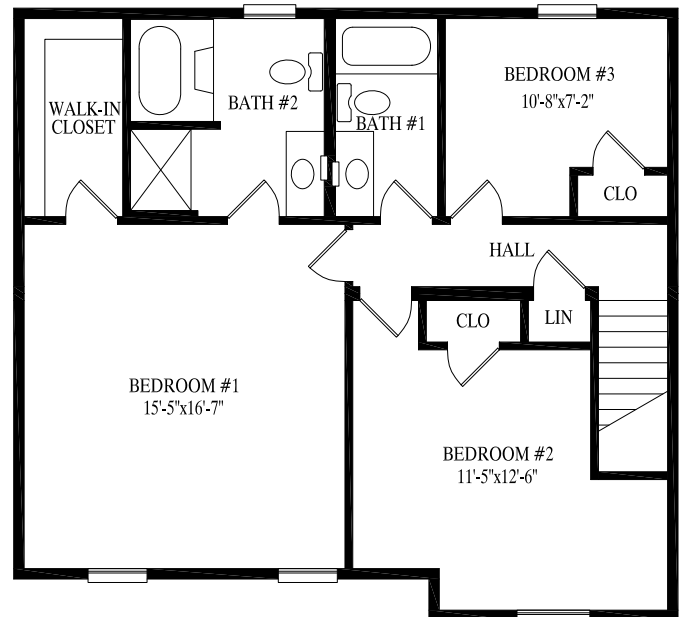
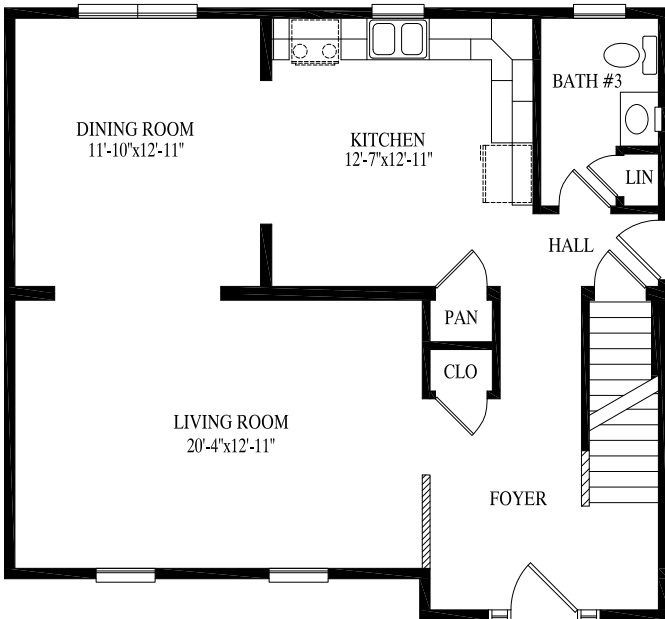


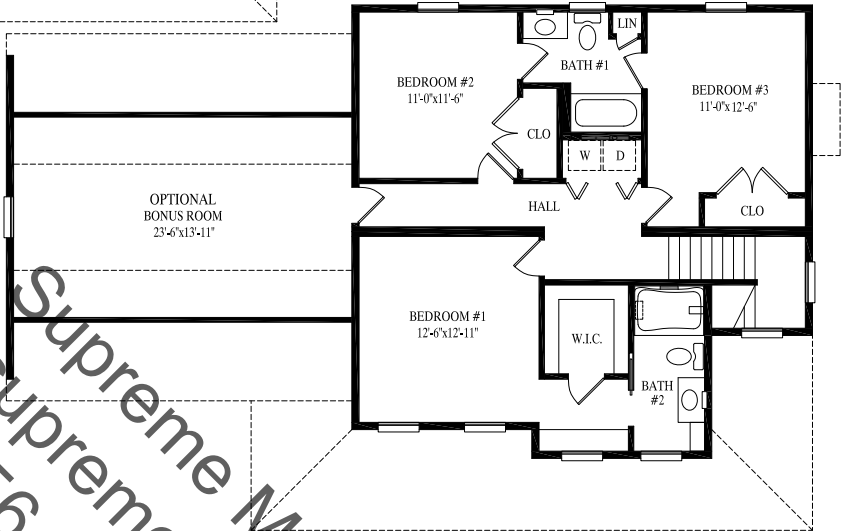
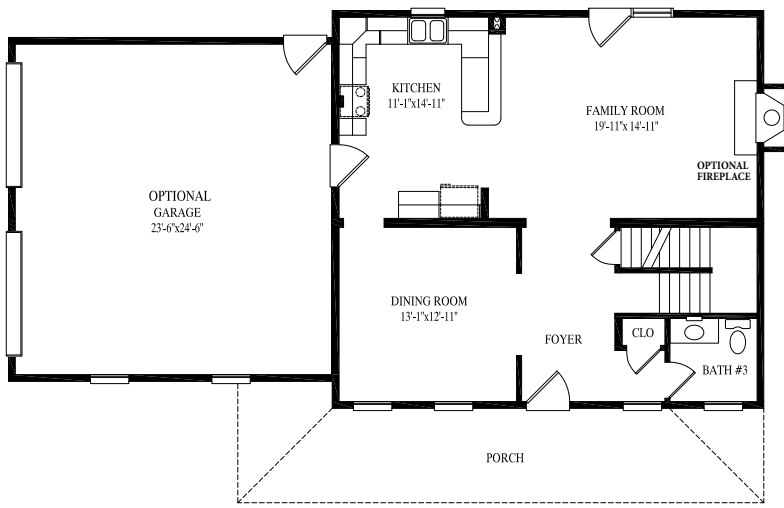
www.SupremeModular.com  
856-652-2382



## Kingsley

29' 6" x 32'  
904 sq. ft. 1st floor  
29' 6" x 32'  
904 sq. ft. 2nd floor  
1808 total sq. ft.





## Holbrook

29' 6" x 32'  
944 sq. ft. 1st floor

31' 6" x 32'  
923 sq. ft. 2nd floor

1867 total sq. ft.

www.suprememodular.com  
856-652-2382



# HOLBROOK

# CHARLESTOWN



www.suprememodular.com  
 Supreme Modular  
 856-652-2382

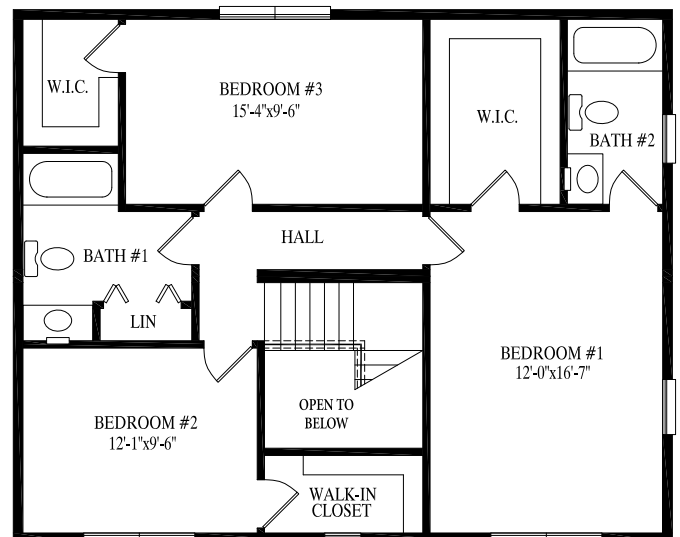
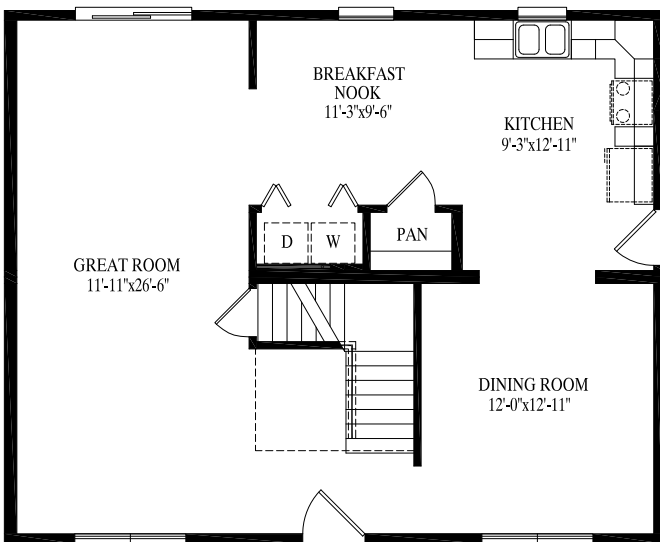


## Charlestown

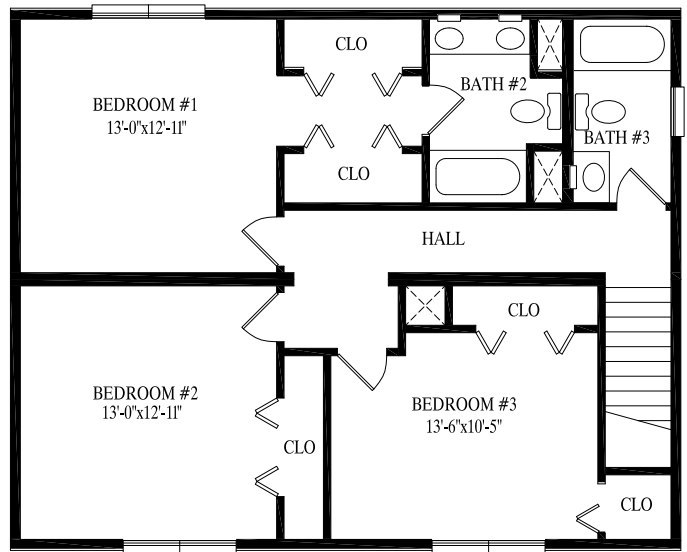
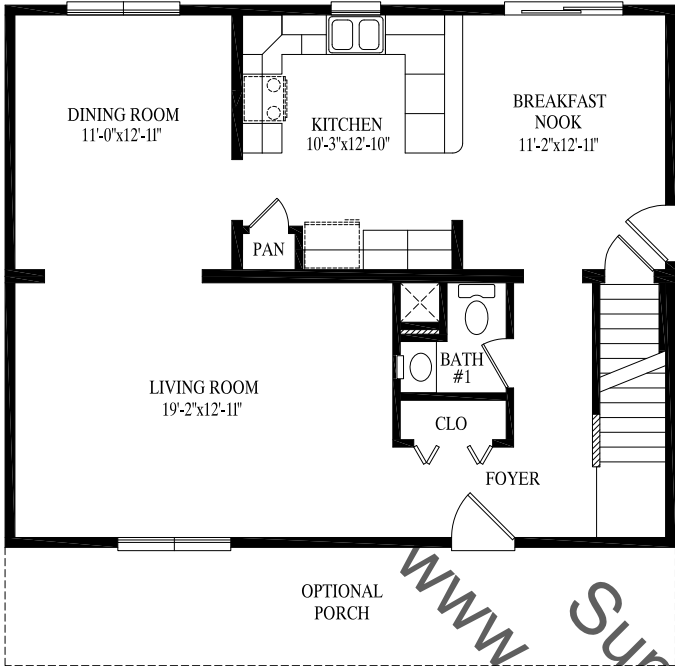
27' 6" x 34'  
 935 sq. ft. 1st floor

27' 6" x 34'  
 935 sq. ft. 2nd floor

1870 total sq. ft.







### Chesapeake

27' 6" x 34'  
935 sq. ft. 1st floor

27' 6" x 34'  
935 sq. ft. 2nd floor

1870 total sq. ft.

www.suprememodular.com  
Supreme Modular  
856-652-2382



# CHESAPEAKE

# SAGAMORE



www.suprememodular.com  
 Supreme Modular  
 856-652-2382

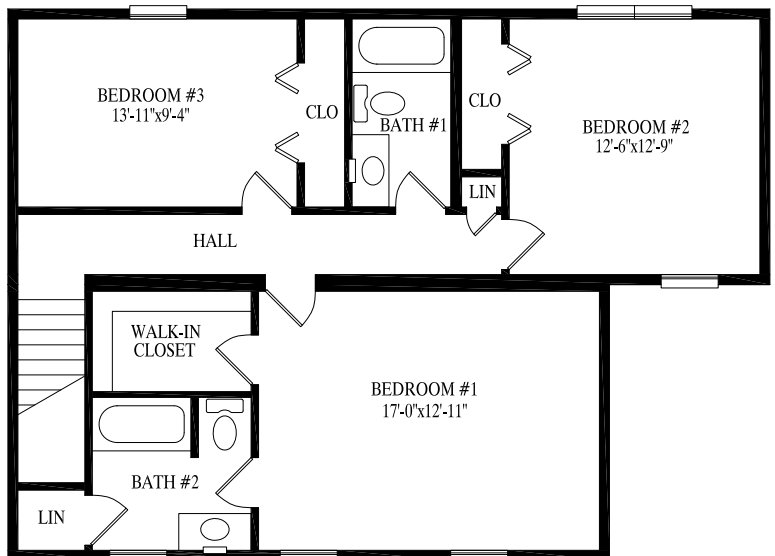
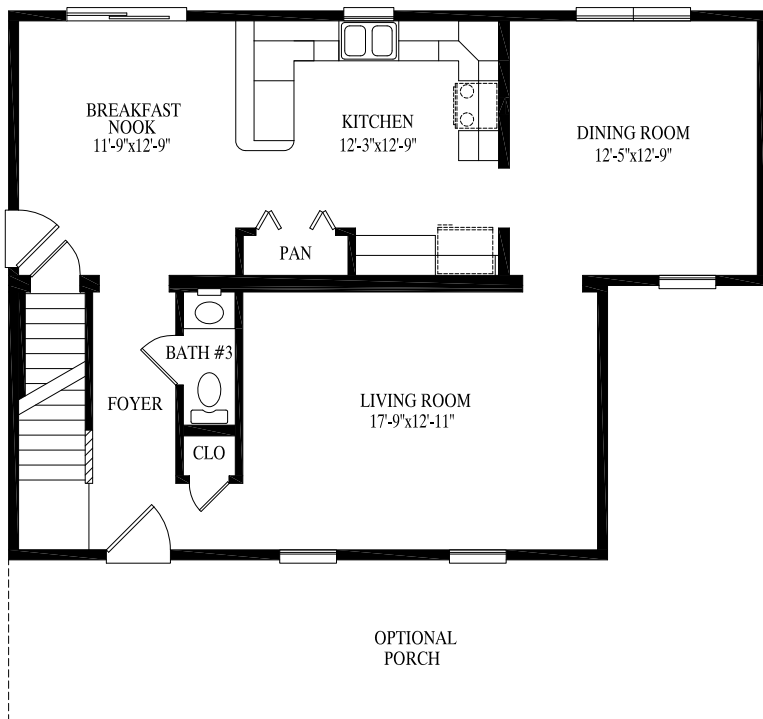


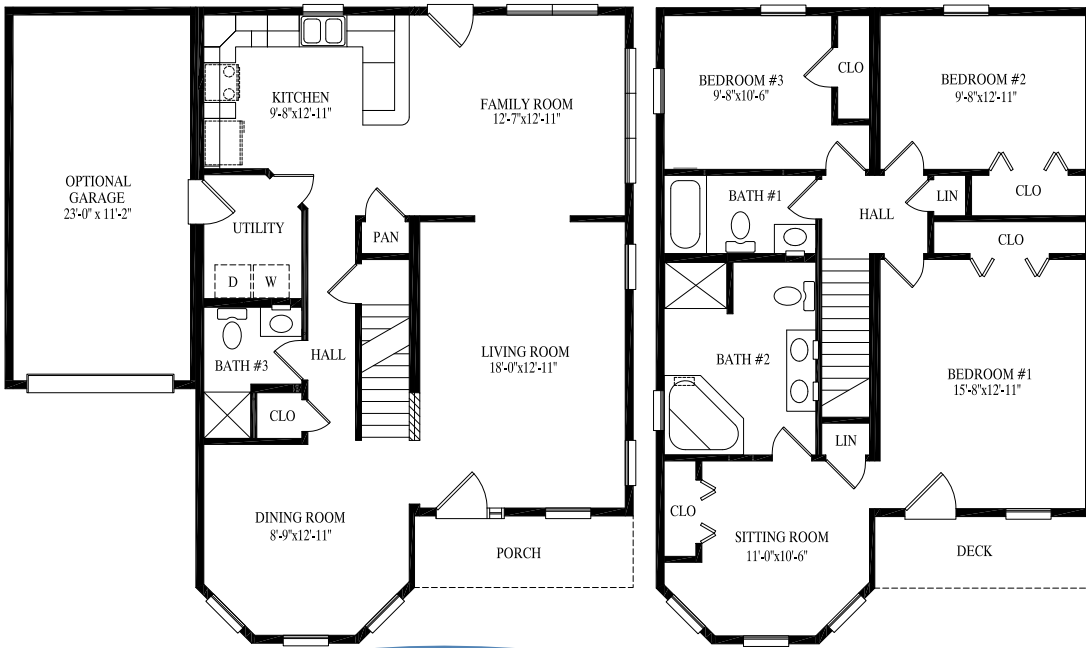
## Sagamore

27' 6" x 30' 38"  
 935 sq. ft. 1st floor

27' 6" x 30' 38"  
 935 sq. ft. 2nd floor

1870 total sq. ft.





## McKenna

27' 6" x 32' / 40'  
 978 sq. ft. 1st floor

27' 6" x 32' / 40'  
 978 sq. ft. 2nd floor

1956 total sq. ft.



McKENNA

# BROOKVILLE



www.suprememodular.com  
 Supreme Modular  
 856-652-2382



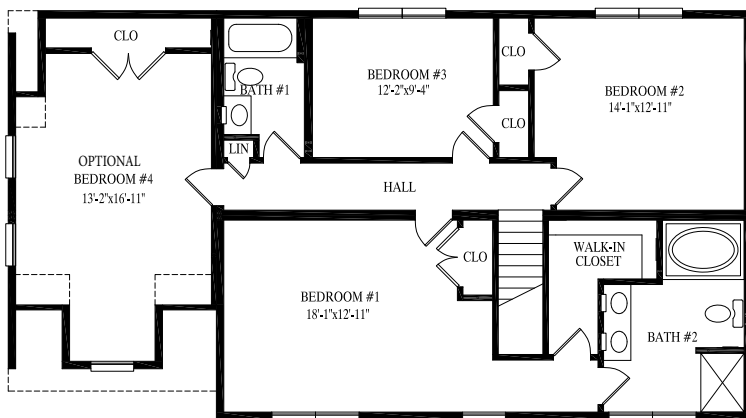
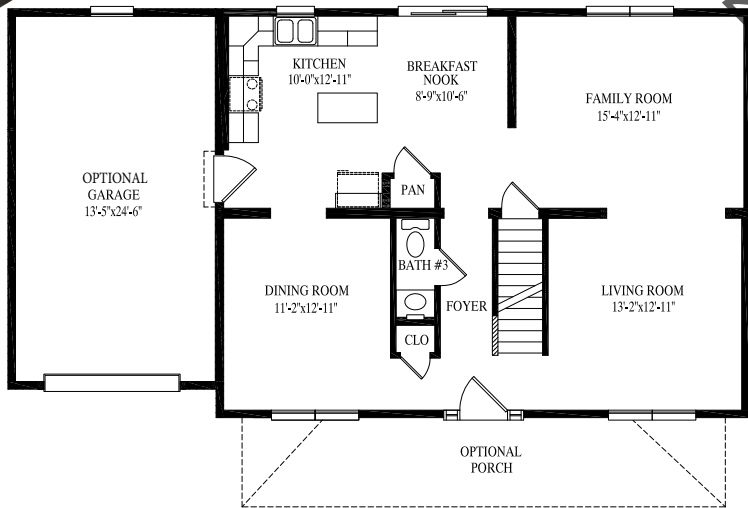
## Brookville

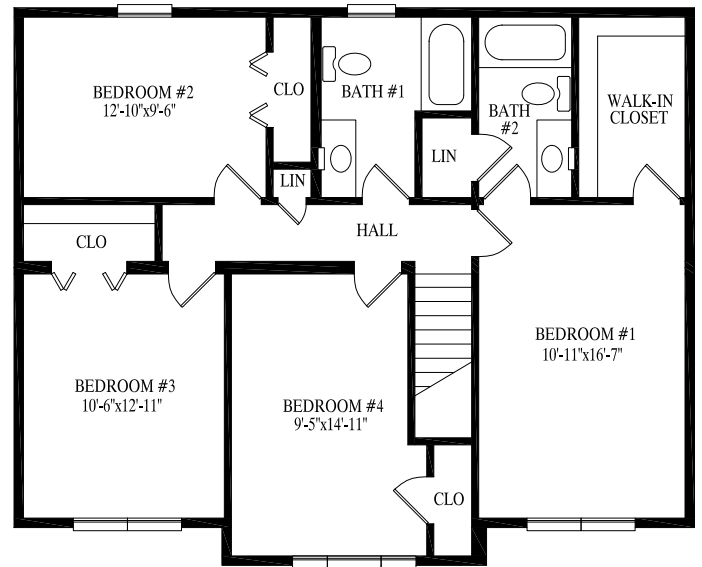
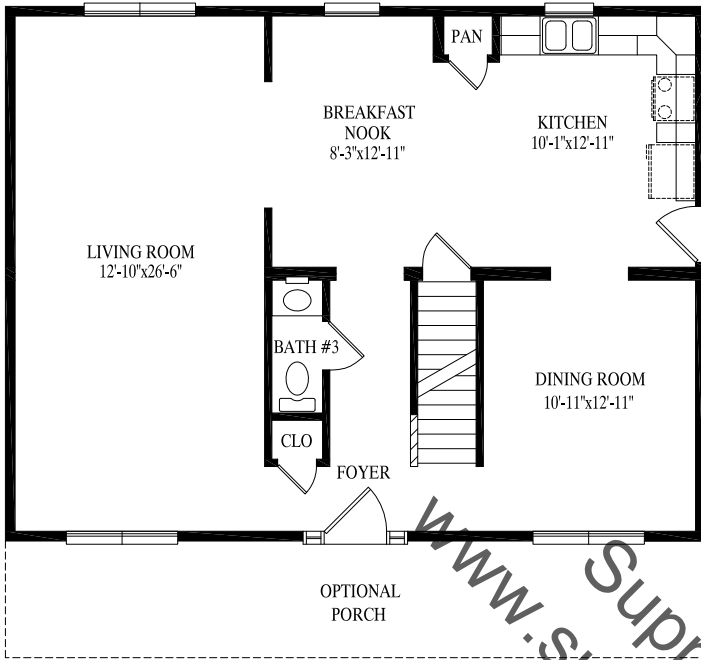
27' 6" x 36'  
 990 sq. ft. 1st floor

27' 6" x 36'  
 990 sq. ft. 2nd floor

1980 total sq. ft.

2280 total sq. ft.  
 with optional garage  
 and 4th bedroom





### Morris

27' 6" x 36'  
 990 sq. ft. 1st floor  
 29' 6" x 36'  
 1018 sq. ft. 2nd floor  
 2008 total sq. ft.

www.suprememodular.com  
 856-652-2382



MORRIS

# BRIGHTON

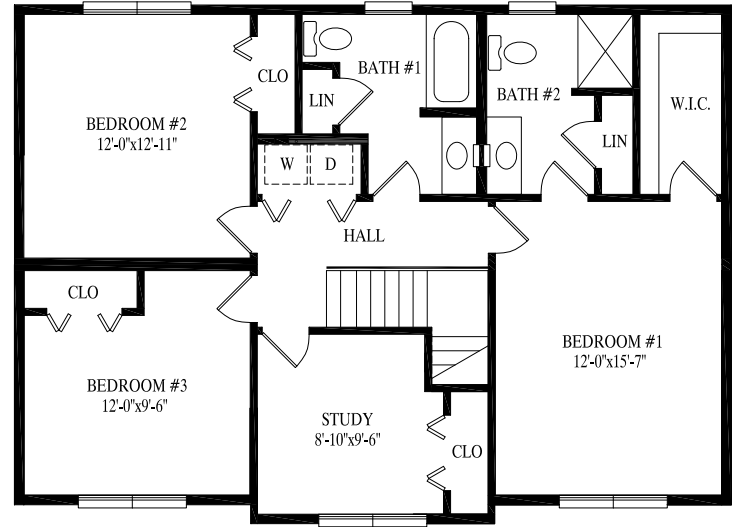
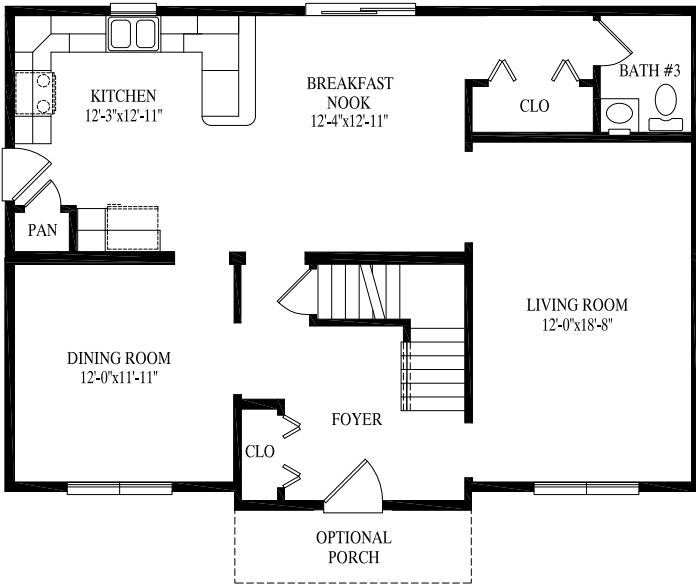


## Brighton

27' 6" x 40'  
1100 sq. ft. 1st floor

27' 6" x 40'  
936 sq. ft. 2nd floor

2036 total sq. ft.



### Saratoga

27' 6" x 38'  
1020 sq. ft. 1st floor

27' 6" x 38'  
1020 sq. ft. 2nd floor

2040 total sq. ft.

www.suprememodular.com  
856-652-2382  
Supreme Modular



# SARATOGA

# DELAWARE

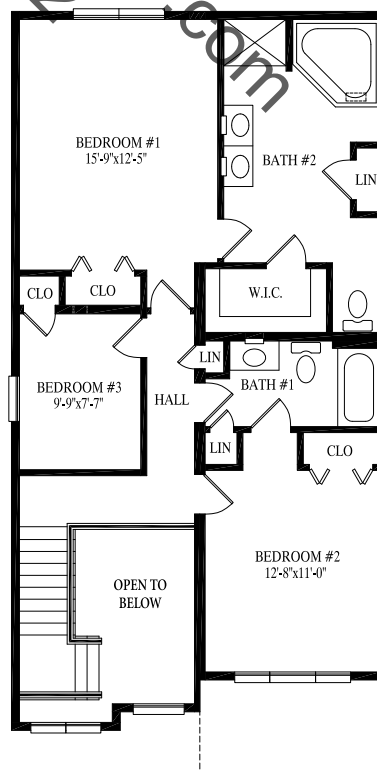
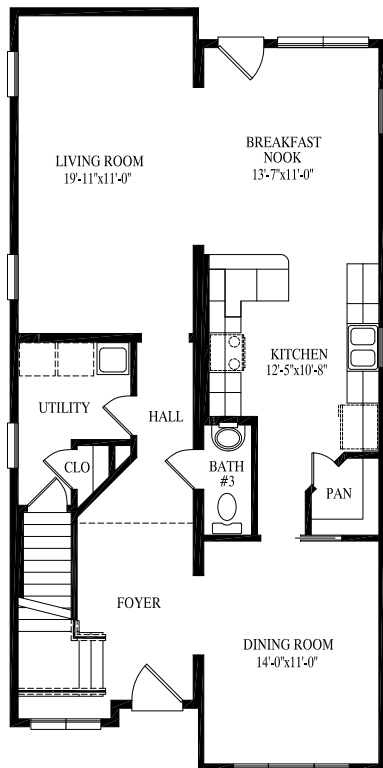


## Delaware

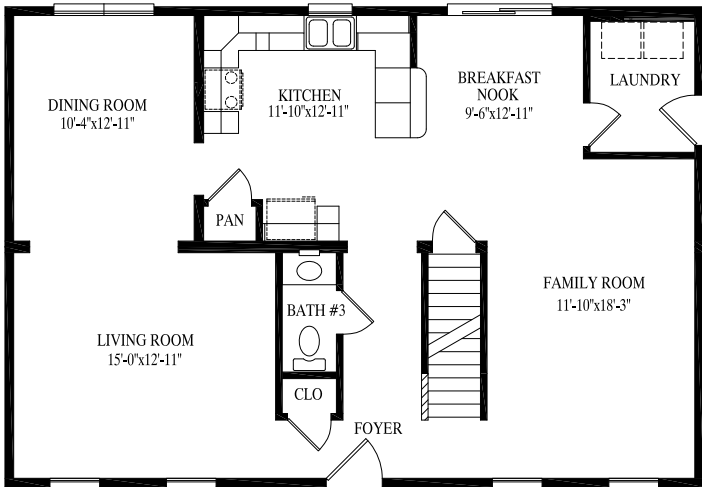
23' 8" x 45' 2"  
1073 sq. ft. 1st floor

23' 8" x 43' 3"  
1026 sq. ft. 2nd floor

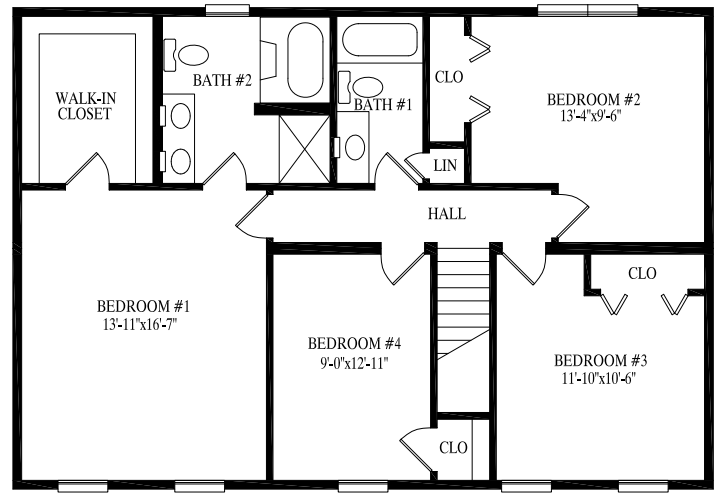
2099 total sq. ft.







OPTIONAL  
PORCH



### Billingsley

27' 6" x 40'  
1100 sq. ft. 1st floor

27' 6" x 40'  
1100 sq. ft. 2nd floor

2200 total sq. ft.

Supreme Modular  
www.suprememodular.com  
856-652-2382



# BILLINGSLEY

# HAYLEY



www.suprememodular.com  
 Supreme Modular  
 856-652-2382

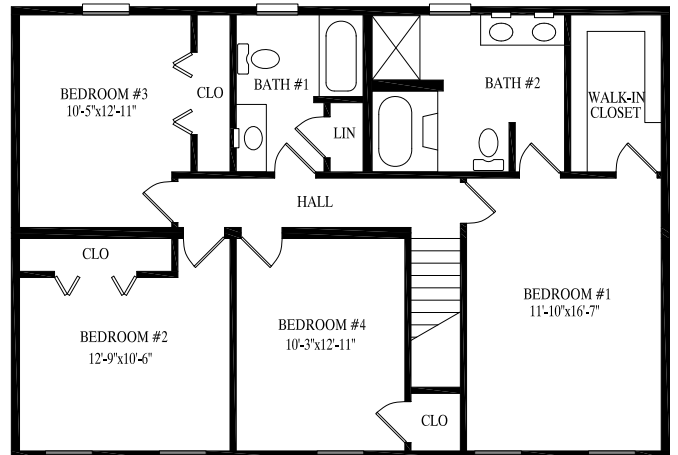
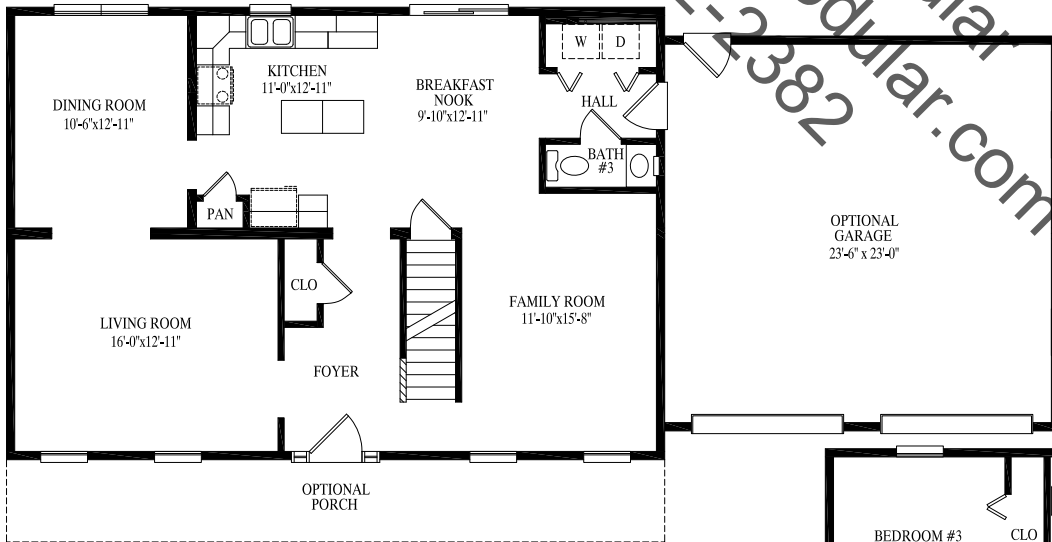


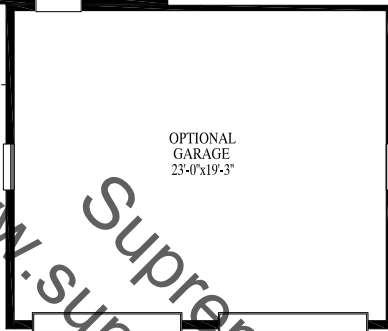
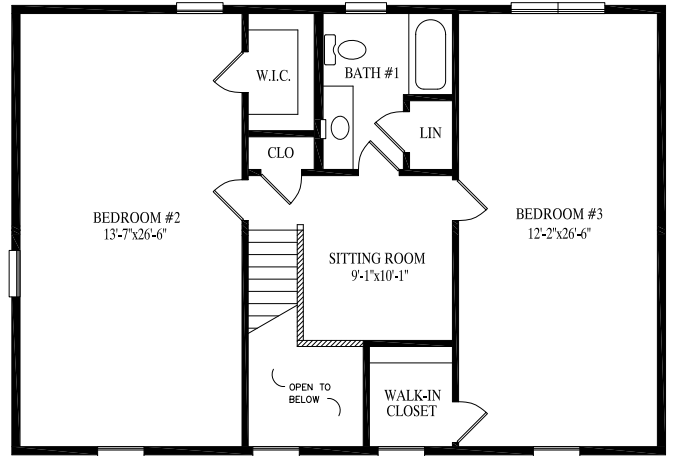
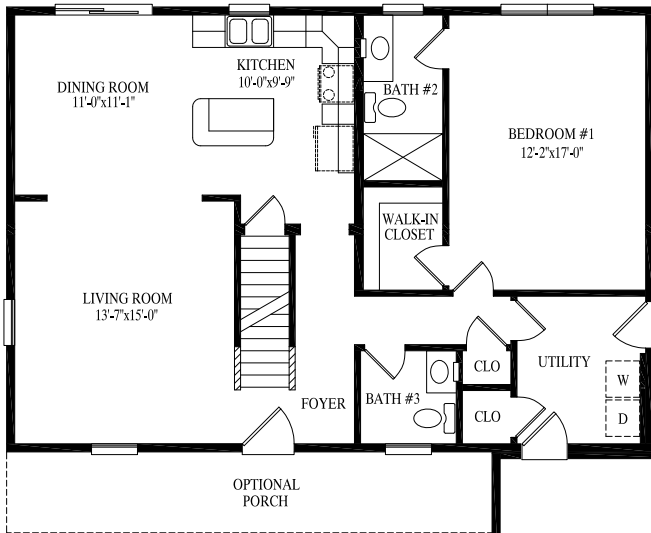
## Hayley

27' 6" x 40'  
 1100 sq. ft. 1st floor

27' 6" x 40'  
 1100 sq. ft. 2nd floor

2200 total sq. ft.





### Sonoma

27' 6" x 40'  
 1100 sq. ft. 1st floor  
 27' 6" x 40'  
 1100 sq. ft. 2nd floor  
 2200 total sq. ft.

www.suprememodular.com  
 Supreme Modular  
 856-652-2382



# SONOMA

# HELENA

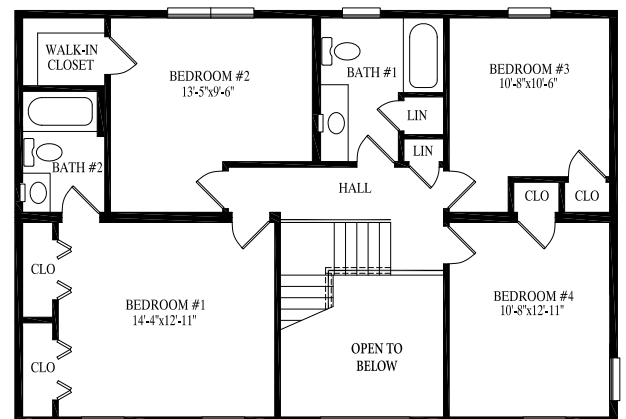
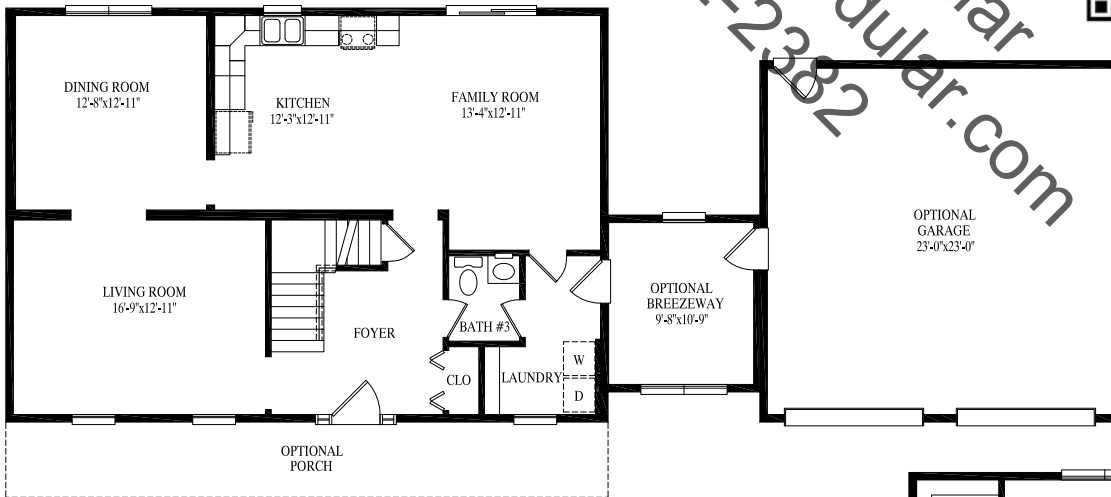


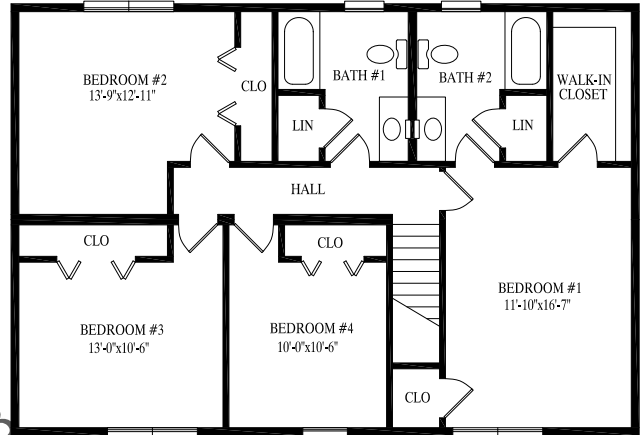
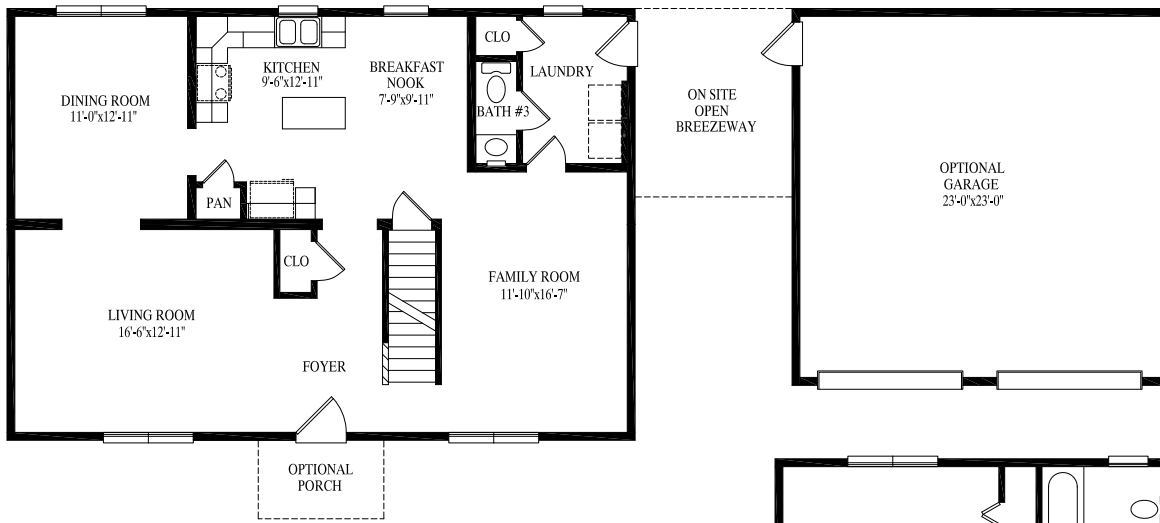
www.suprememodular.com  
 Supreme Modular  
 856-652-2382



## Helena

27' 6" x 40'  
 1100 sq. ft. 1st floor  
 27' 6" x 40'  
 1100 sq. ft. 2nd floor  
 2200 total sq. ft.





**Tuscany**

27' 6" x 40'  
1100 sq. ft. 1st floor

27' 6" x 40'  
1100 sq. ft. 2nd floor

2200 total sq. ft.

www.suprememodular.com  
856-652-2382  
Supreme Modular



**TUSCANY**

# NIAGARA

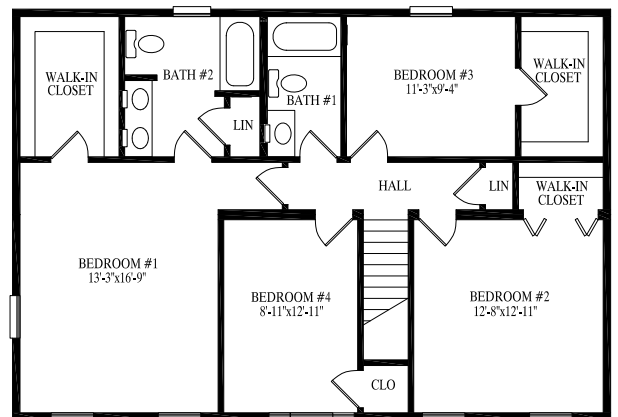
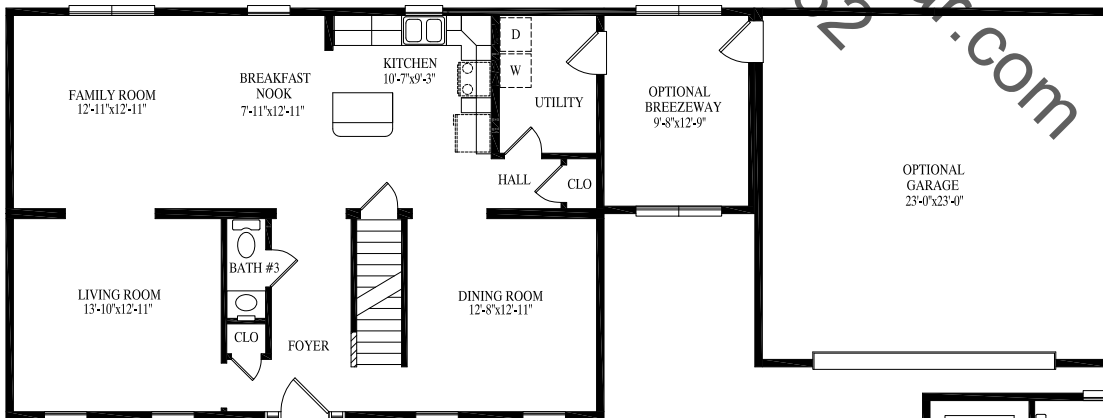


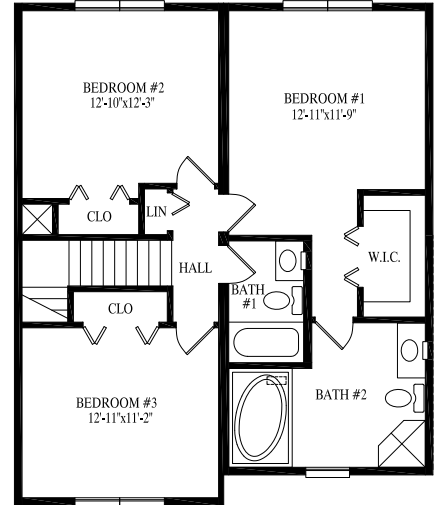
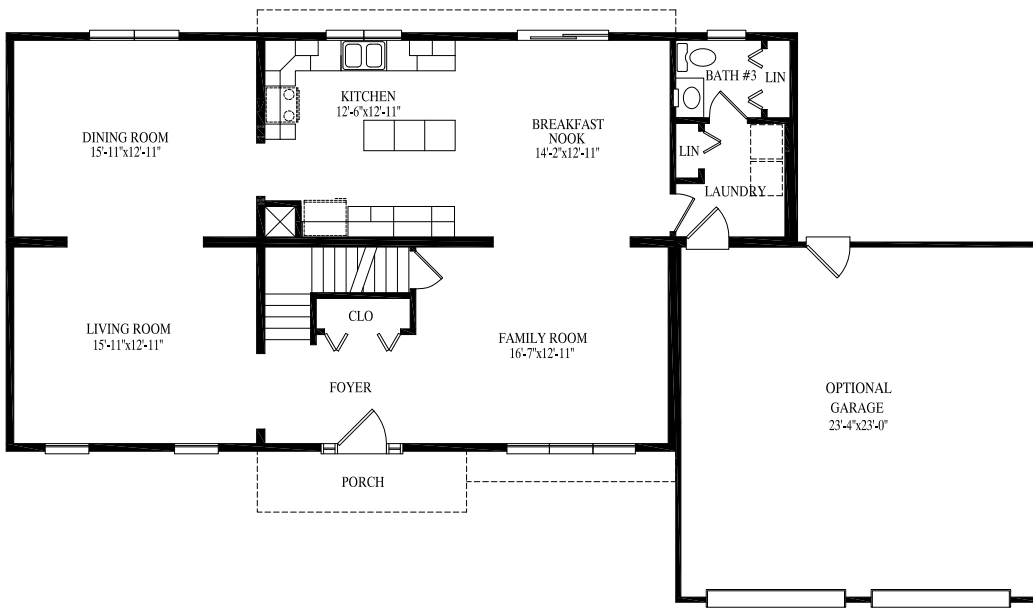
www.suprememodular.com  
 Supreme Modular  
 856-652-2382



## Niagara

27' 6" x 40'  
 1100 sq. ft. 1st floor  
 27' 6" x 40'  
 1100 sq. ft. 2nd floor  
 2200 total sq. ft.





### Schuylkill

27' 6" x 52'  
1326 sq. ft. 1st floor

27' 6" x 33'  
880 sq. ft. 2nd floor

2206 total sq. ft.

Supreme Modular  
[www.suprememodular.com](http://www.suprememodular.com)  
 856-652-2382



# SCHUYLKILL

# COVINGTON



www.suprememodular.com  
 Supreme Modular  
 856-652-2382

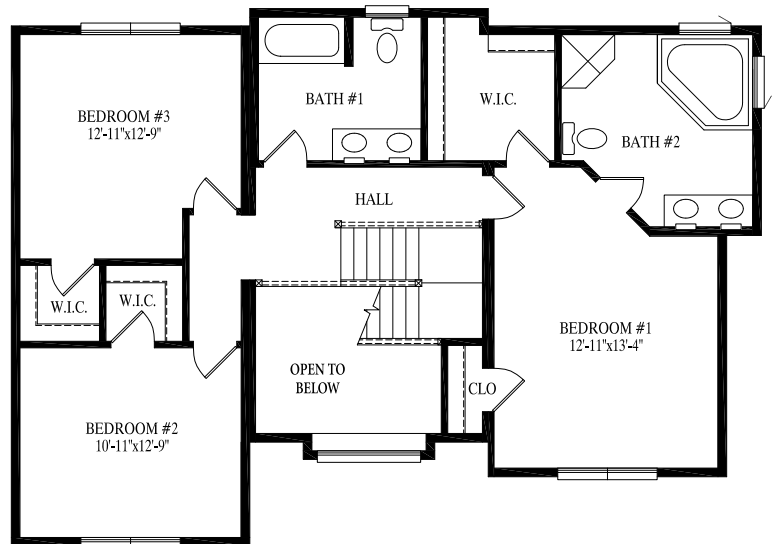
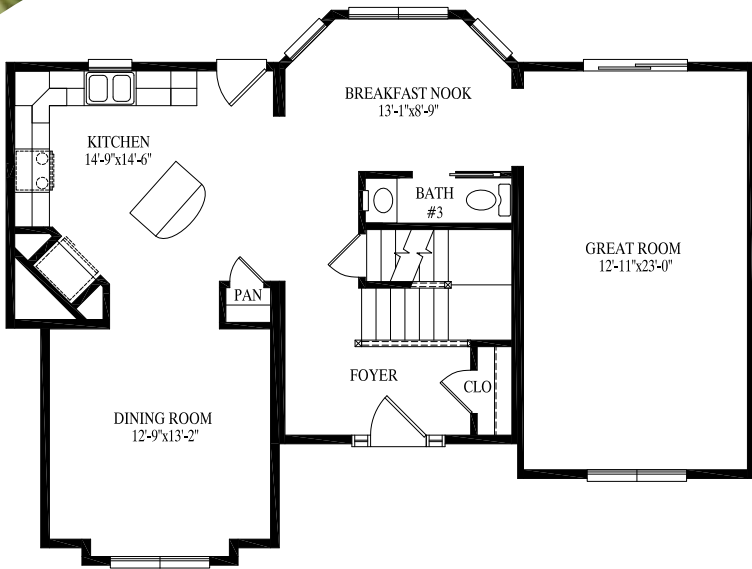


## Covington

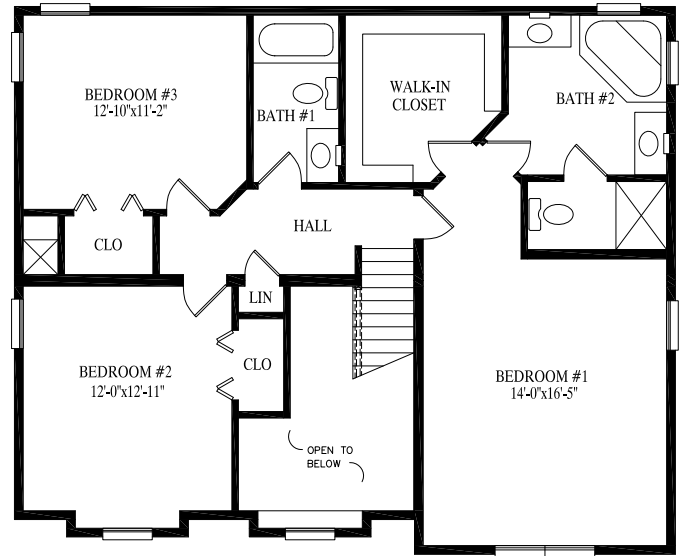
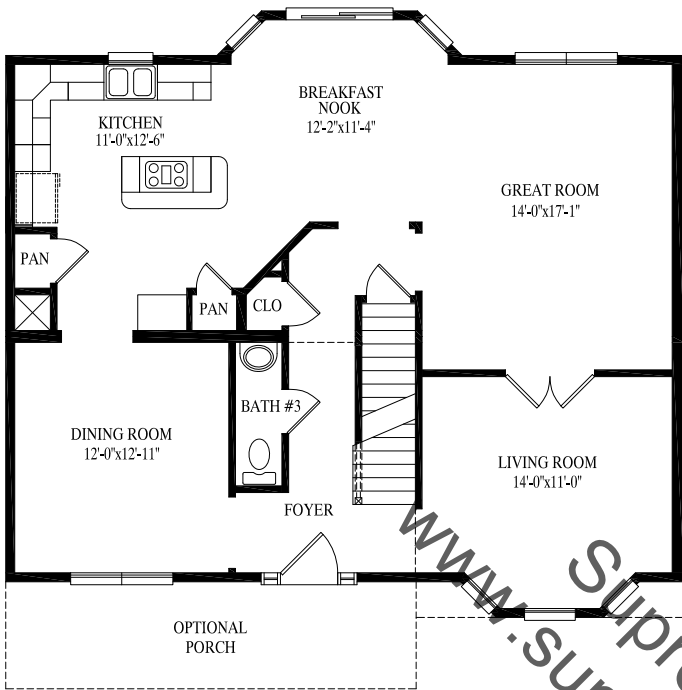
28' x 43' 3"  
 1090 sq. ft. 1st floor

30' x 43' 3"  
 1138 sq. ft. 2nd floor

2228 total sq. ft.







### Roosevelt

34' x 38'  
 1166 sq. ft. 1st floor  
 31' 6" x 38'  
 1165 sq. ft. 2nd floor  
 2331 total sq. ft.



# ROOSEVELT

# STONEFIELD



www.suprememodular.com  
 Supreme Modular  
 856-652-2382

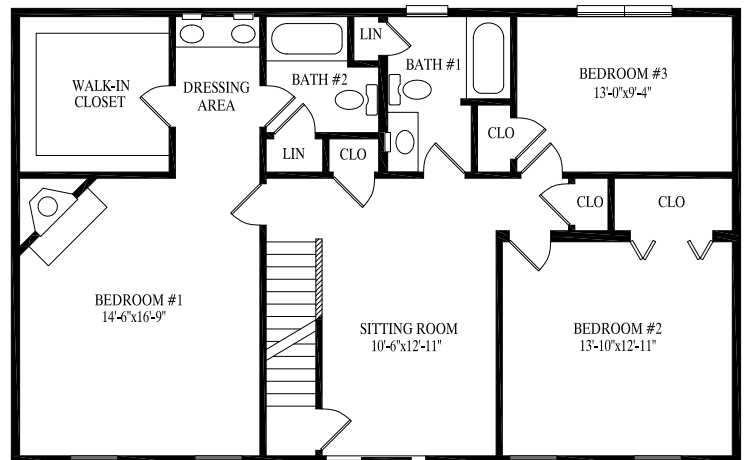
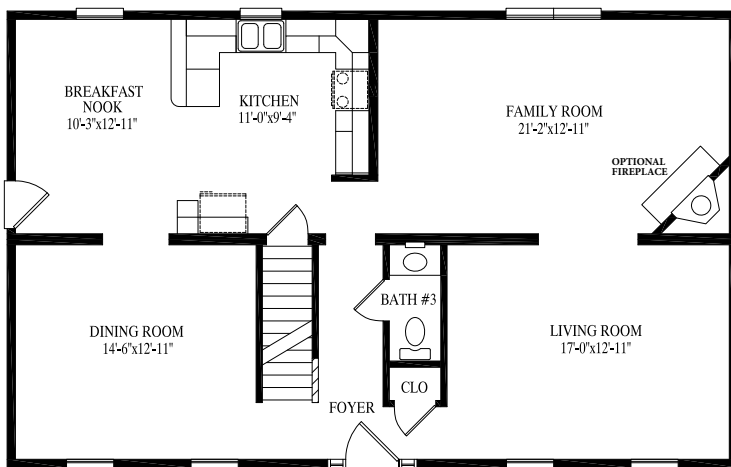


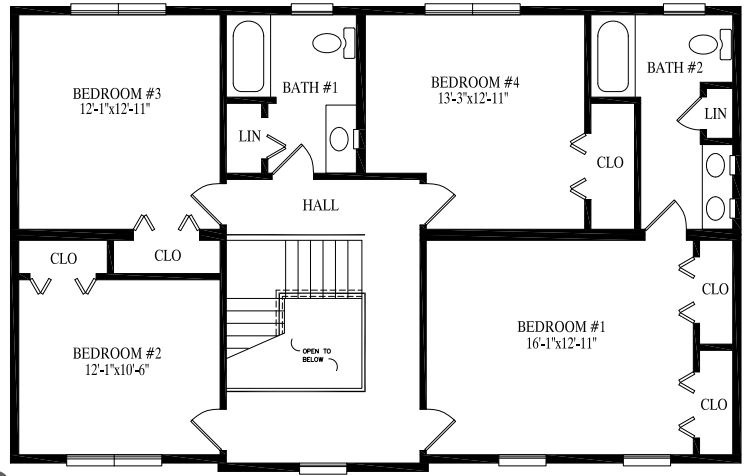
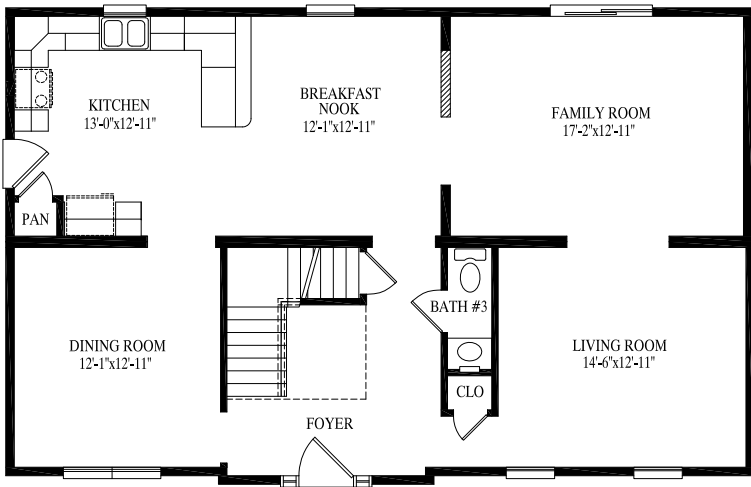
## Stonefield

27' 6" x 44'  
 1210 sq. ft. 1st floor

27' 6" x 44'  
 1210 sq. ft. 2nd floor

2420 total sq. ft.





**Tidwell**

27' 6" x 44'  
 1217 sq. ft. 1st floor  
 27' 6" x 44'  
 1217 sq. ft. 2nd floor  
 2434 total sq. ft.

www.suprememodular.com  
 Supreme Modular  
 856-652-2382



**TIDWELL**

# MONROE



www.suprememodular.com  
856-652-2382

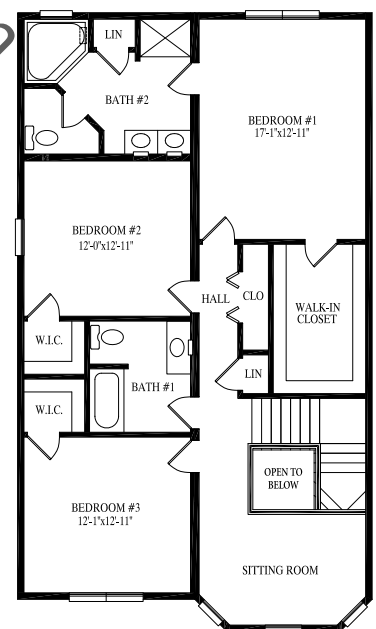
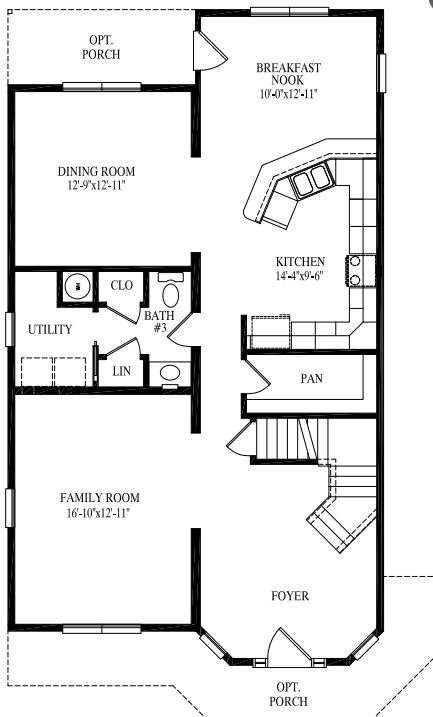


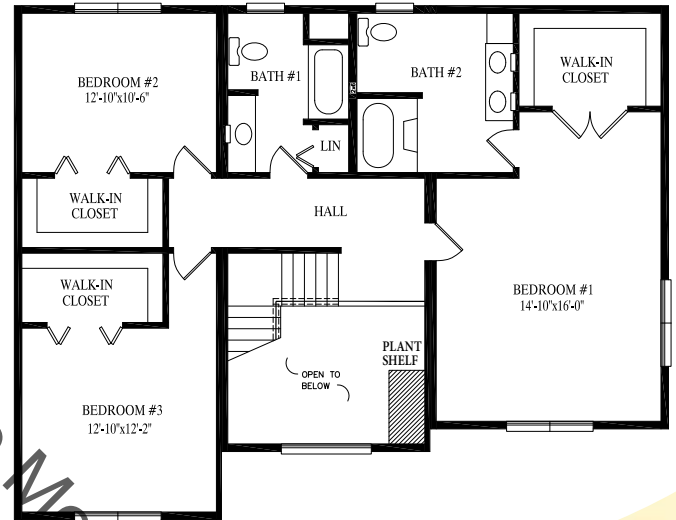
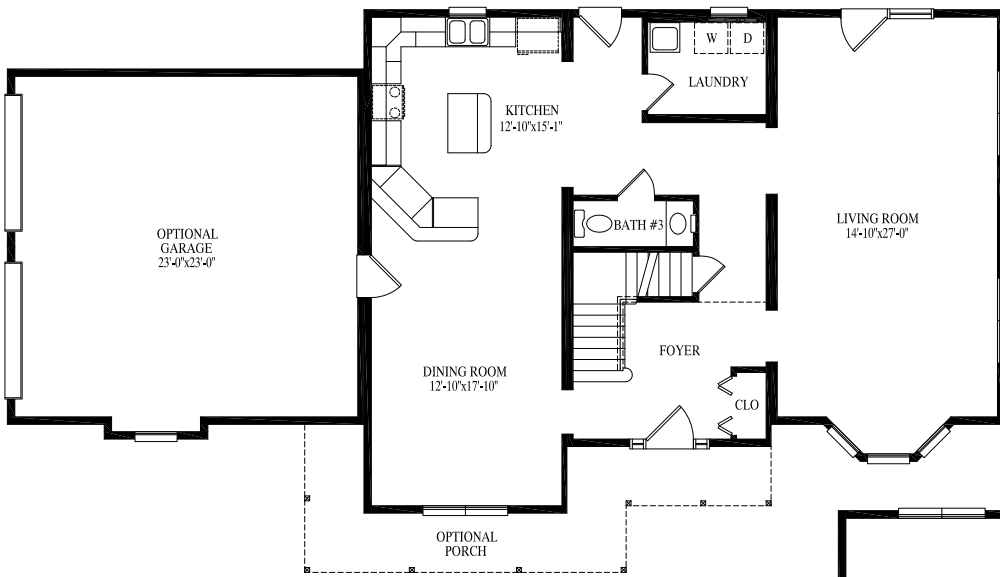
## Monroe

27' 6" x 40' / 48'  
1204 sq. ft. 1st floor

27' 6" x 45' 6" / 48'  
1280 sq. ft. 2nd floor

2484 total sq. ft.





## Berkshire

34' x 43' 3"  
1331 sq. ft. 1st floor

34' x 43' 3"  
1315 sq. ft. 2nd floor

2646 total sq. ft.

www.suprememodular.com  
856-652-2382  
Supreme Modular



# BERKSHIRE

# BRIDGEPORT



www.suprememodular.com  
 Supreme Modular  
 856-652-2382

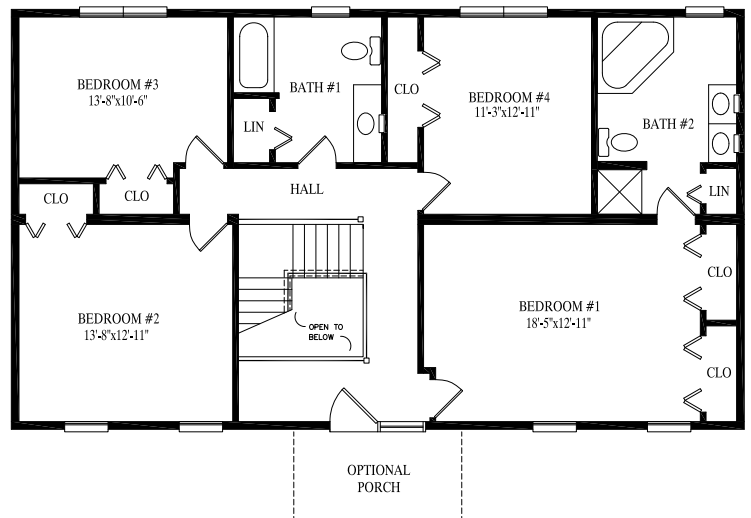
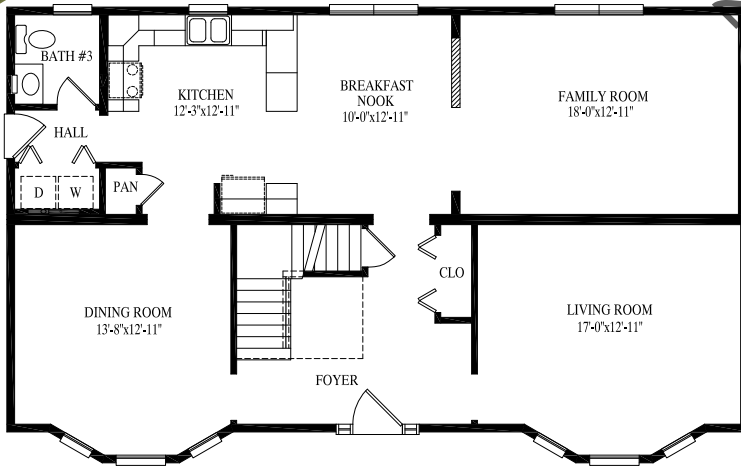


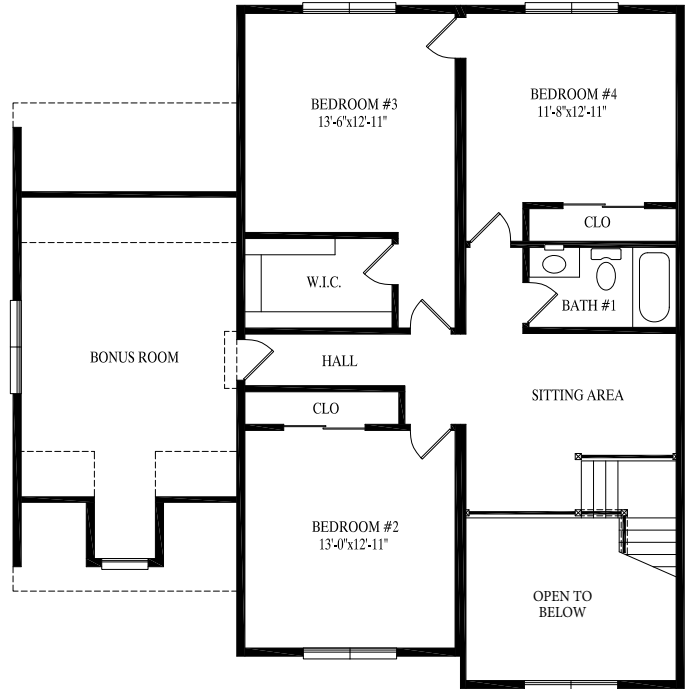
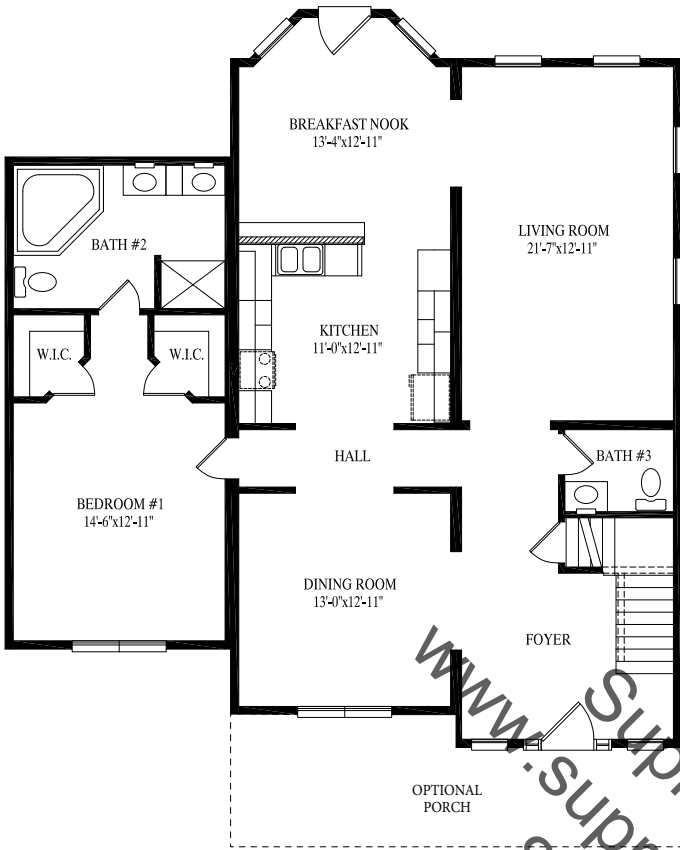
## Bridgeport

29' 6" x 48'  
 1357 sq. ft. 1st floor

27' 6" x 48'  
 1320 sq. ft. 2nd floor

2677 total sq. ft.





**Hilshire**

45' x 41' 3"  
1566 sq. ft. 1st floor

42' x 41' 3"  
1128 sq. ft. 2nd floor

2694 total sq. ft.

www.suprememodular.com  
856-652-2382  
Supreme Modular



**HILSHIRE**

# KENSINGTON



www.suprememodular.com  
 856-652-2382  
 Supreme Modular

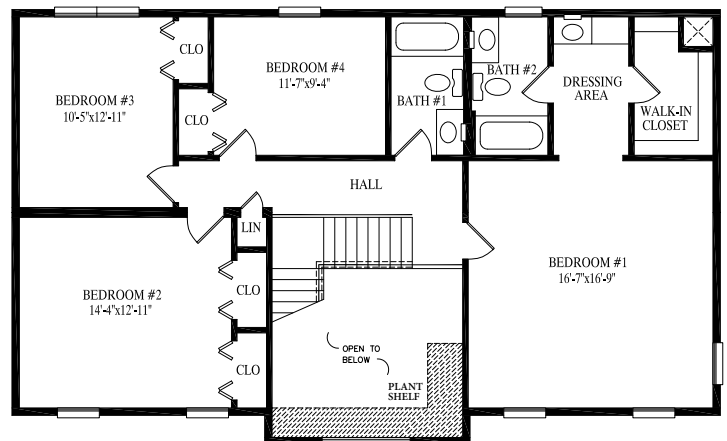
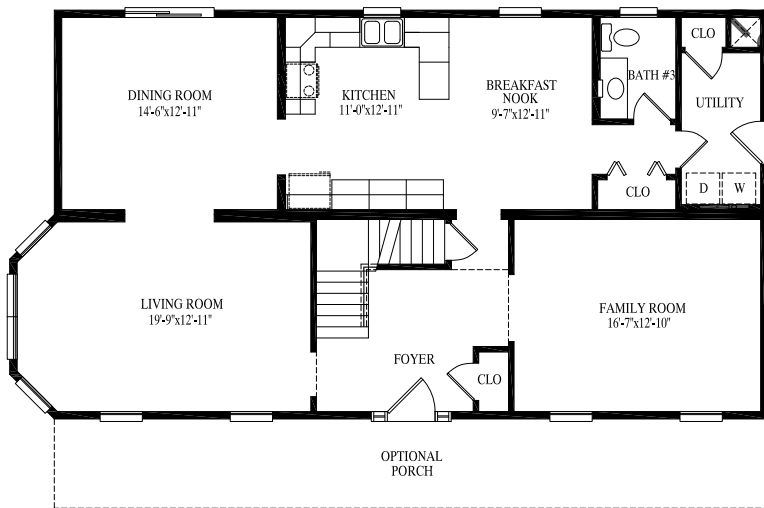


## Kensington

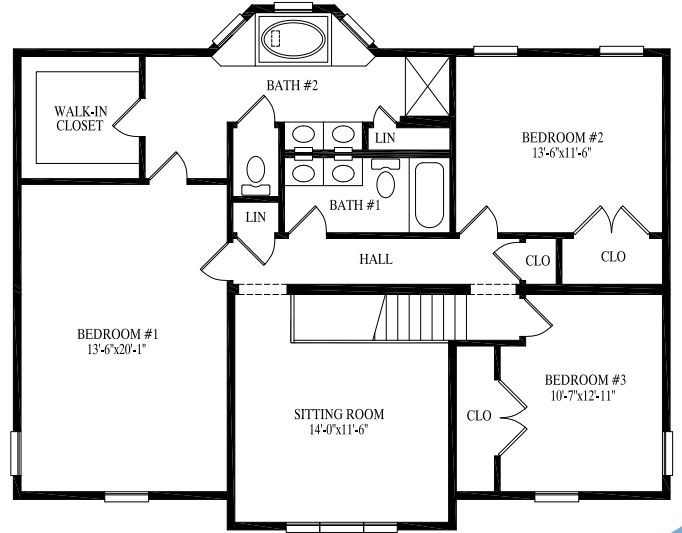
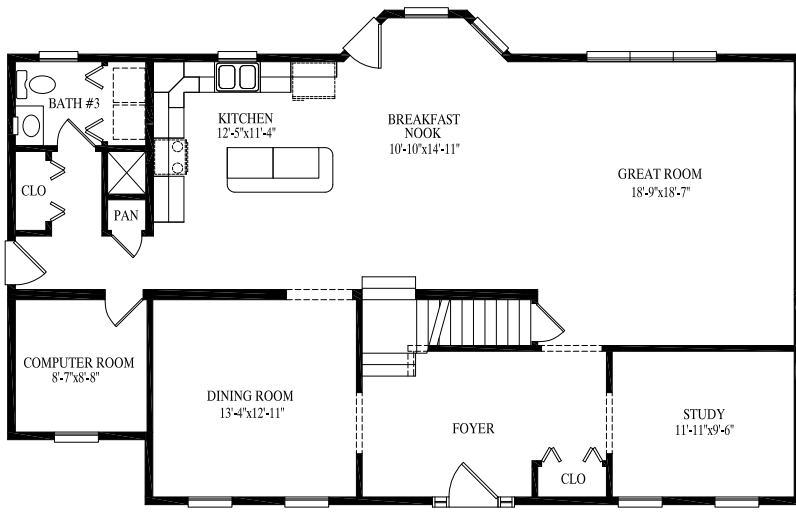
27' 6" x 51'  
 1353 sq. ft. 1st floor

29' 6" x 48'  
 1348 sq. ft. 2nd floor

2701 total sq. ft.







### Fayette

32' 4 1/2" x 52'  
1520 sq. ft. 1st floor

34' 4 1/2" x 43'  
1323 sq. ft. 2nd floor

2843 total sq. ft.

www.suprememodular.com  
856-652-2382  
Supreme Modular

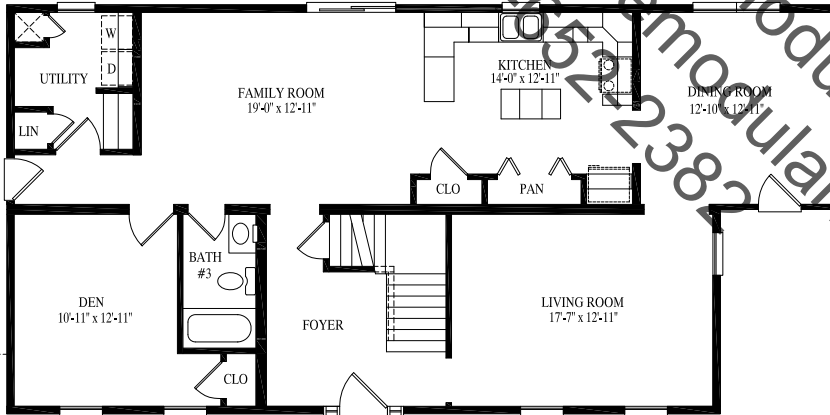


FAYETTE

# MONTGOMERY



www.suprememodular.com  
 856-652-2382  
 Supreme Modular

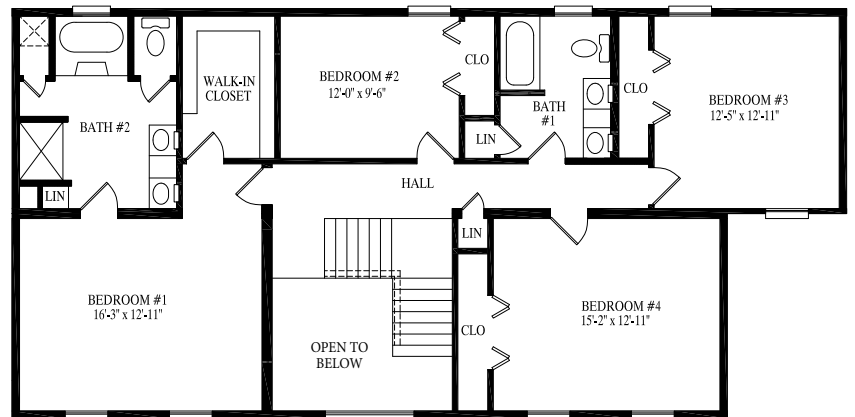


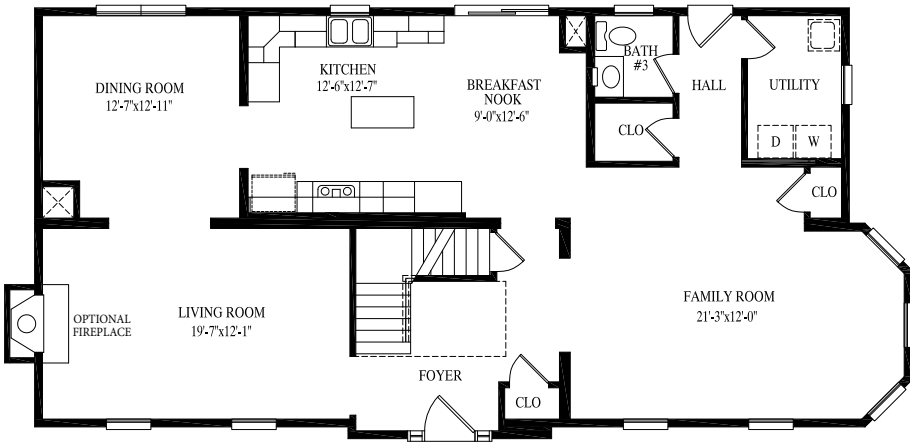
## Montgomery

27' 6" x 56'  
 1430 sq. ft. 1st floor

27' 6" x 56'  
 1430 sq. ft. 2nd floor

2860 total sq. ft.



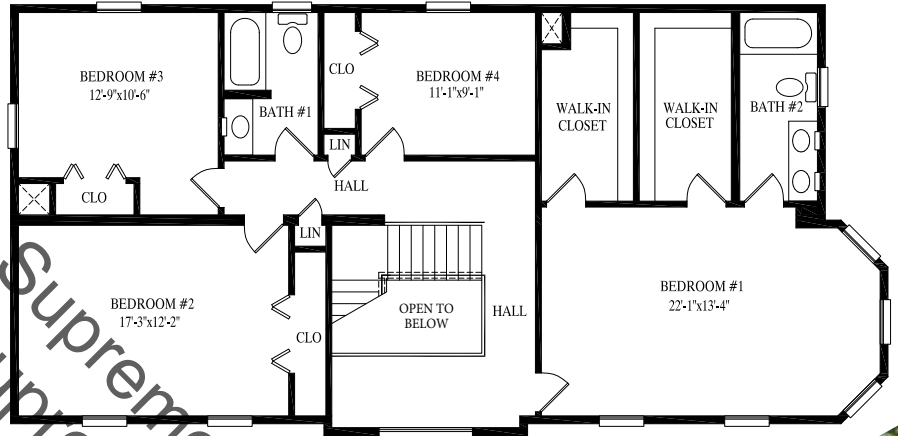


## Magnolia

27' 6" x 56'  
1444 sq. ft. 1st floor

27' 6" x 56'  
1444 sq. ft. 2nd floor

2888 total sq. ft.



www.suprememodular.com  
856-652-2382  
Supreme Modular

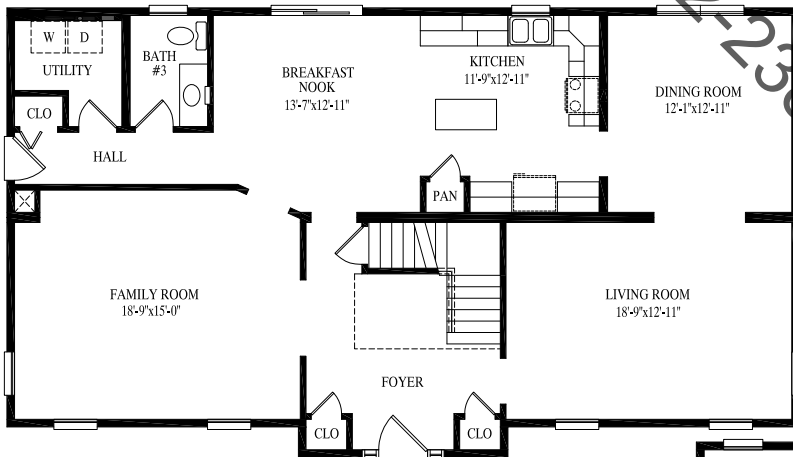


# MAGNOLIA

# SIERRA



www.suprememodular.com  
 Supreme Modular  
 856-652-2382

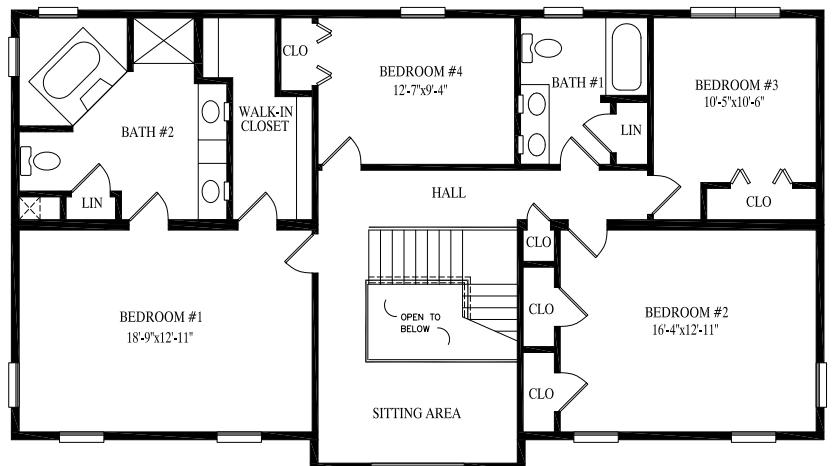


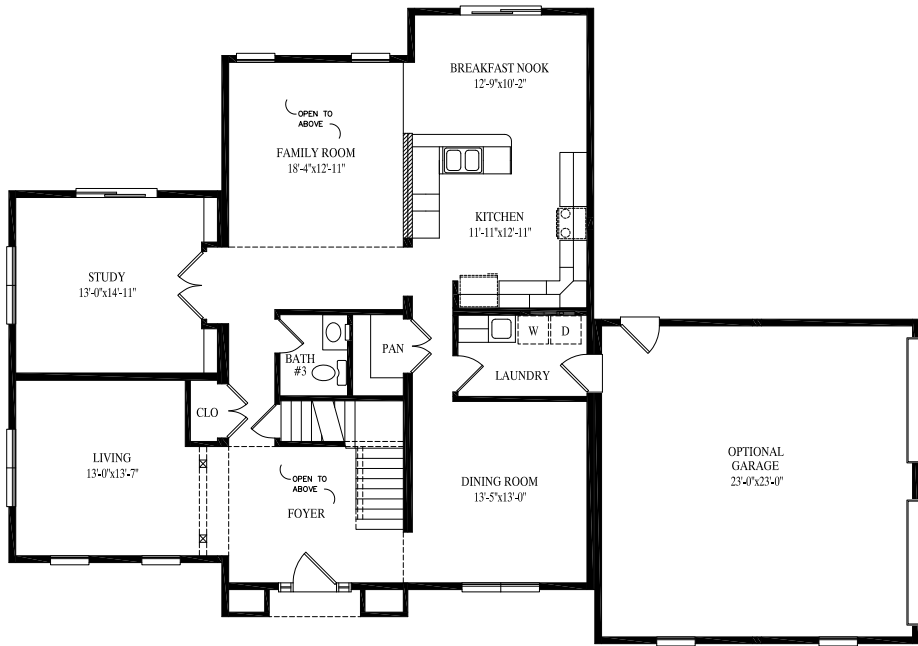
## Sierra

29' 6" x 52'  
 1459 sq. ft. 1st floor

29' 6" x 52'  
 1459 sq. ft. 2nd floor

2918 total sq. ft.





## Springfield

45' x 43' 3"  
1582 sq. ft. 1st floor

45' x 43' 3"  
1582 sq. ft. 2nd floor

3164 total sq. ft.



Supreme Modular  
www.suprememodular.com  
856-652-2382



# SPRINGFIELD

# BROOKMERE



www.suprememodular.com  
 Supreme Modular  
 856-652-2382

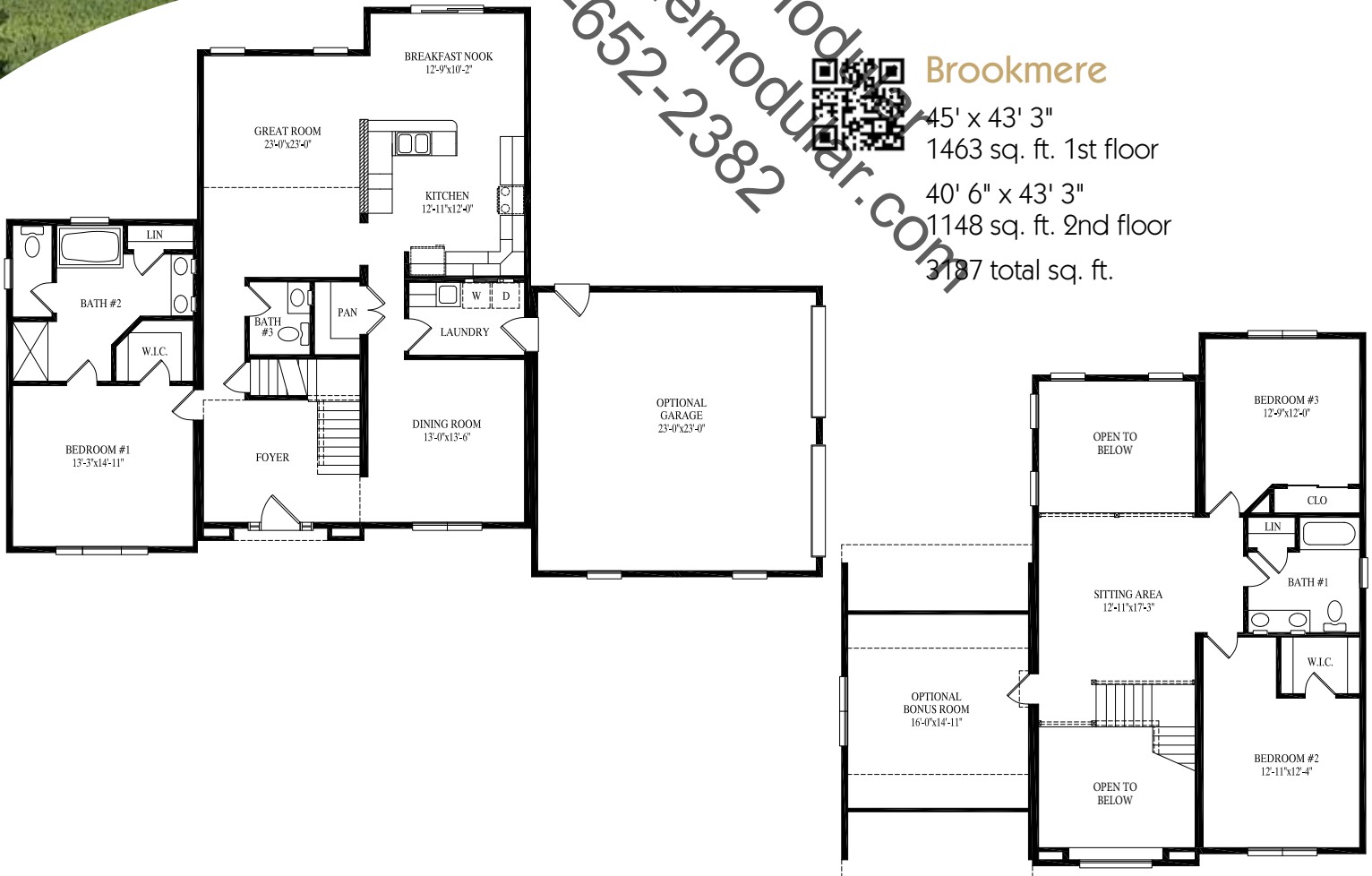


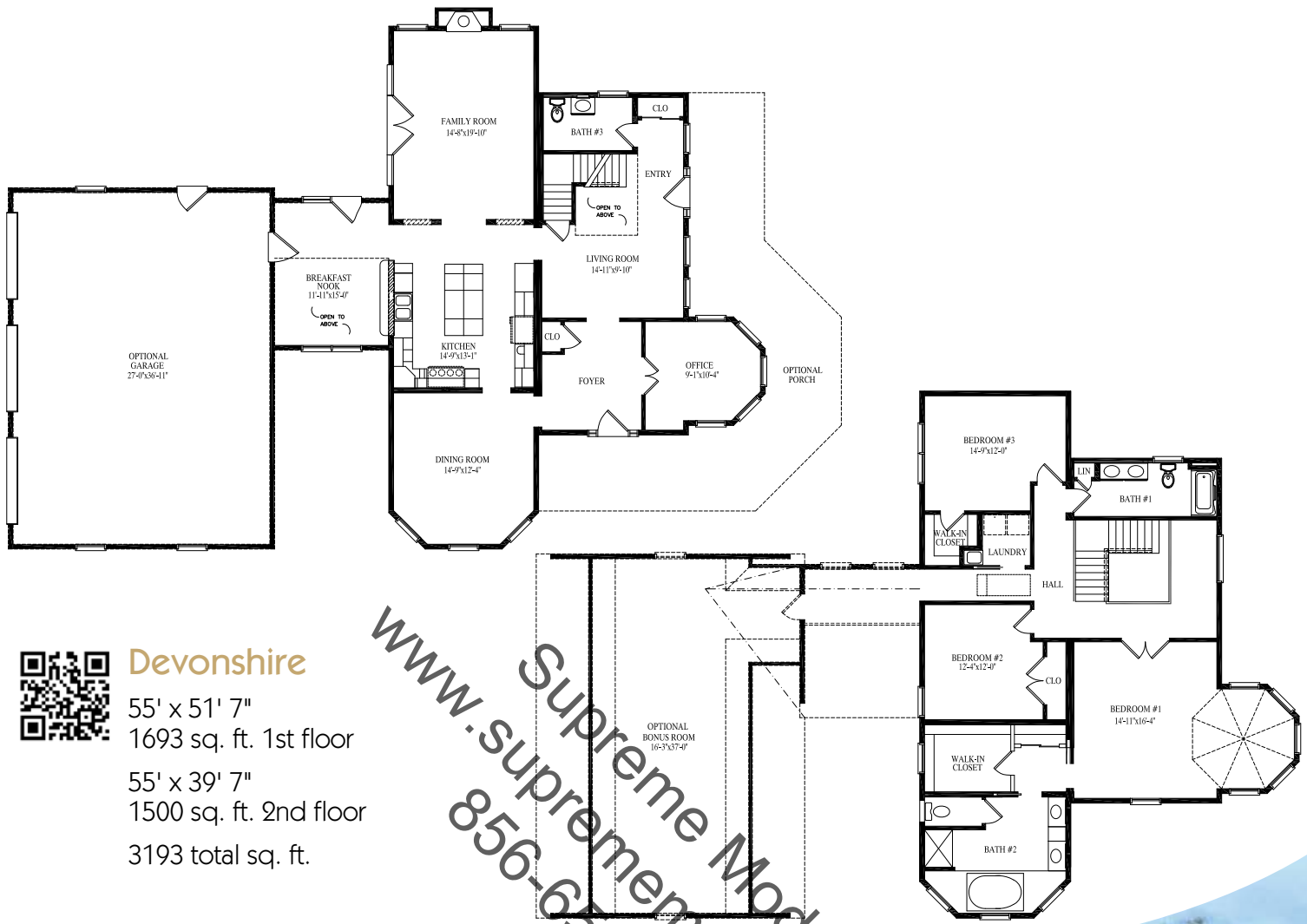
## Brookmere

45' x 43' 3"  
 1463 sq. ft. 1st floor

40' 6" x 43' 3"  
 1148 sq. ft. 2nd floor

3187 total sq. ft.





## Devonshire

55' x 51' 7"  
1693 sq. ft. 1st floor

55' x 39' 7"  
1500 sq. ft. 2nd floor

3193 total sq. ft.

[www.suprememodular.com](http://www.suprememodular.com)  
 Supreme Modular  
 856-652-2382



# DEVONSHIRE

# MEADOWVIEW

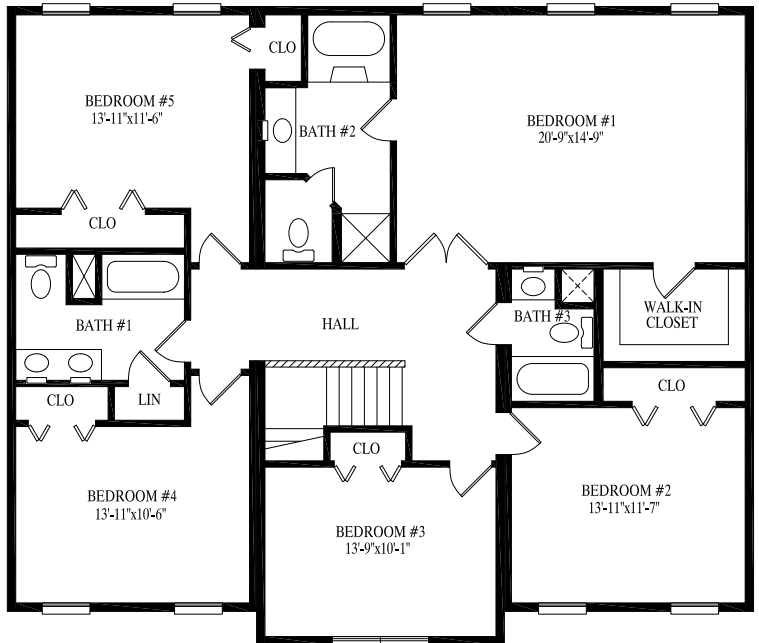
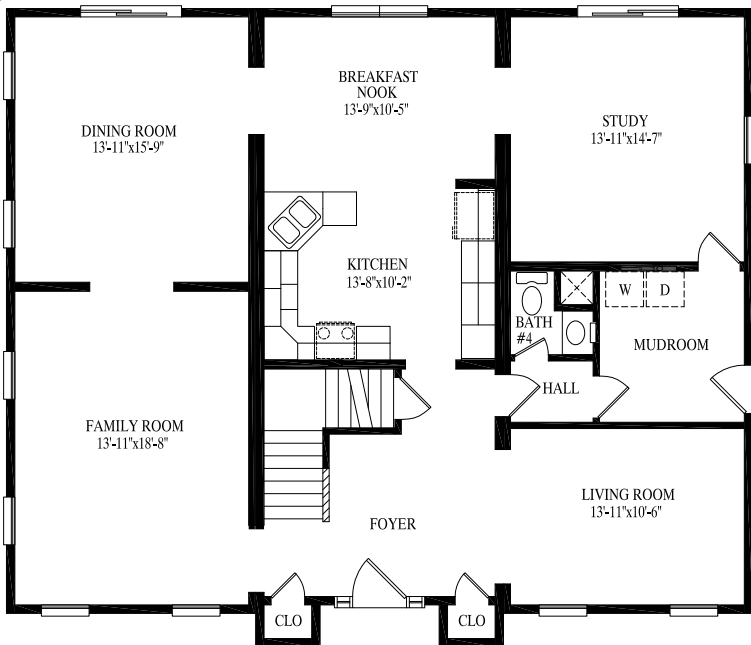


www.suprememodular.com  
 856-652-2382  
 Supreme Modular

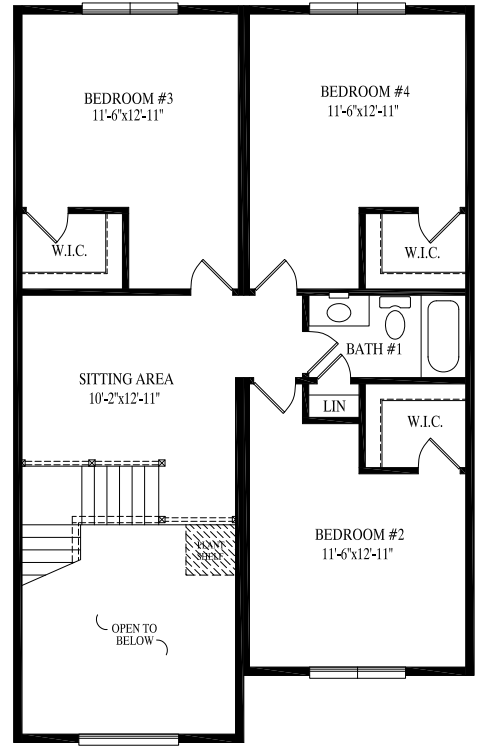
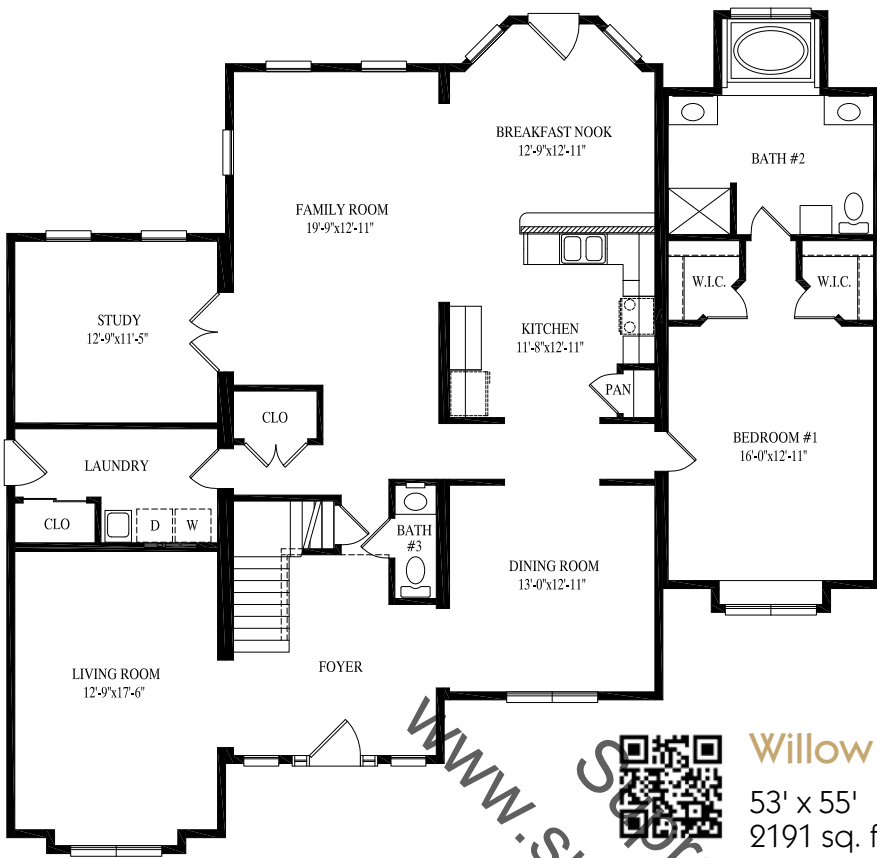


## Meadowview

33' x 44' 5"  
 1611 sq. ft. 1st floor  
 33' x 44' 5"  
 1629 sq. ft. 2nd floor  
 3240 total sq. ft.







**Willow**

53' x 55'  
2191 sq. ft. 1st floor

44' x 27' 6"  
1155 sq. ft. 2nd floor

3346 total sq. ft.

www.suprememodular.com  
856-652-2382  
Supreme Modular



*WILLOW*

# WESTMORELAND

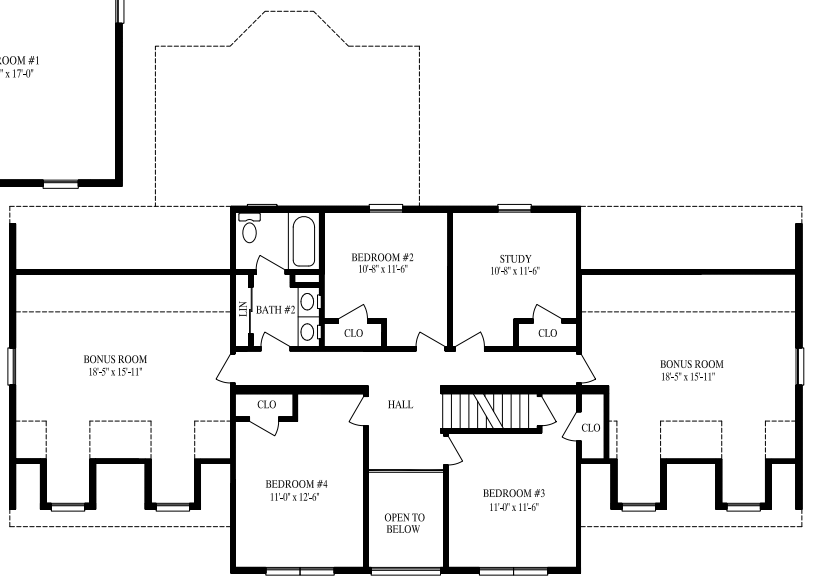


www.suprememodular.com  
 Supreme Modular  
 856-652-2382



## Westmoreland

48' 3" x 68'  
 2323 sq. ft. 1st floor  
 31' 6" x 68'  
 1650 sq. ft. 2nd floor  
 3973 total sq. ft.



# Popular Exterior Options...



Single Unit Extension



Bump Out



Reverse Gable



Reverse Gable w/Extension



Dormers



Set Back



Decorative Shingle Return



Shed Dormer



Porch Roof

Great Homes Start With Quality Products...



NOTE: All renderings are artist's concepts only and may vary from actual home.



Supreme Modular  
3040 White Horse Pike  
Hammonton, NJ 08037  
[www.suprememodular.com](http://www.suprememodular.com)

Supreme Modular  
3040 White Horse Pike  
Hammonton, NJ 08037  
[www.suprememodular.com](http://www.suprememodular.com)  
856-652-2382