

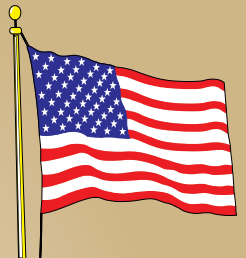
Building  
**AMERICA'S**  
Future... Today!



Supreme Modular  
[www.suprememodular.com](http://www.suprememodular.com)  
856-652-2382

Supreme Modular  
3040 White Horse Pike  
Hammonton, NJ 08037

**Ranch**

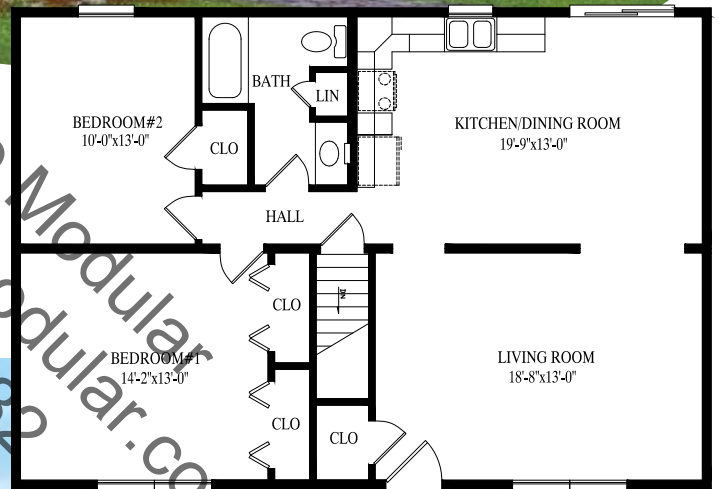


Made in USA

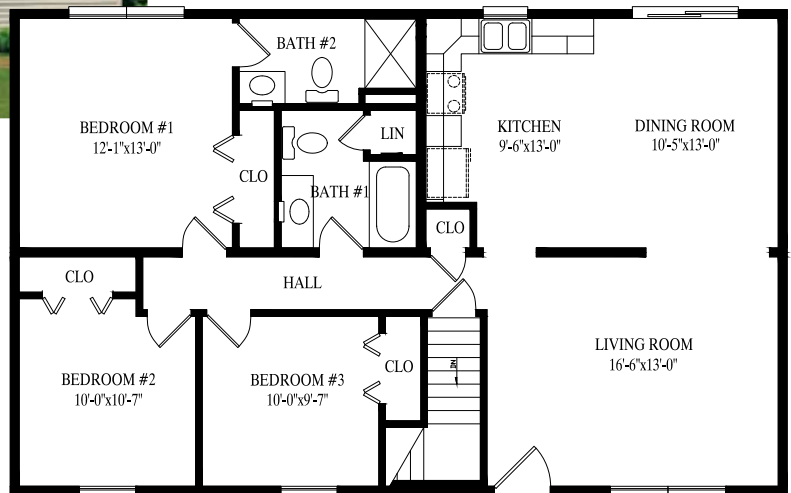
# OAKWOOD



**Oakwood**  
27' 6" x 40' Ranch  
1100 sq. ft.



**Breezewood**  
27' 6" x 44' Ranch  
1210 sq. ft.



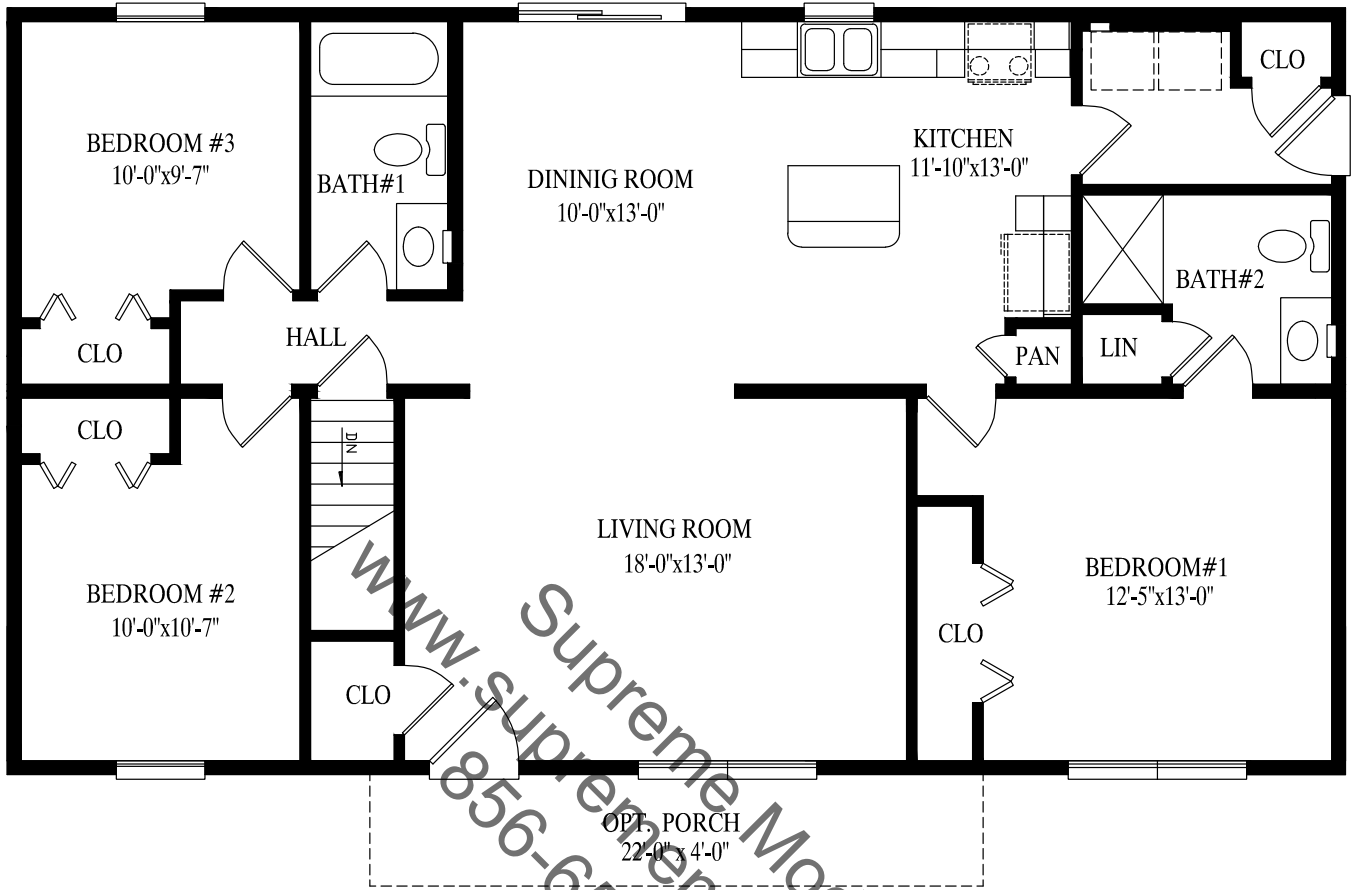
# BREEZEWOOD



# Wheatfield

27' 6" x 48' Ranch

1320 sq. ft.



# WHEATFIELD

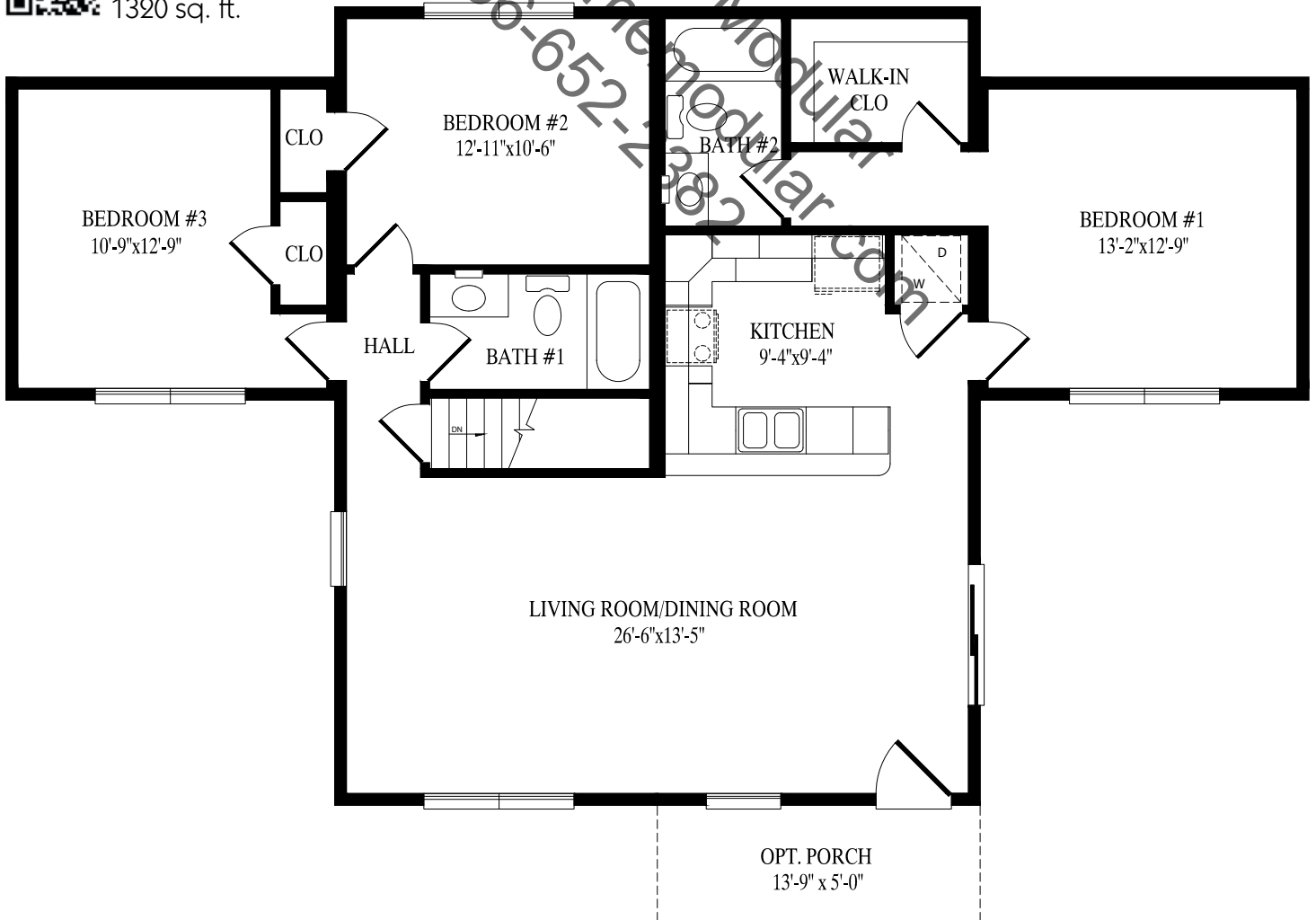
# FERN HOLLOW



## Fern Hollow

34' x 55' 6" Ranch

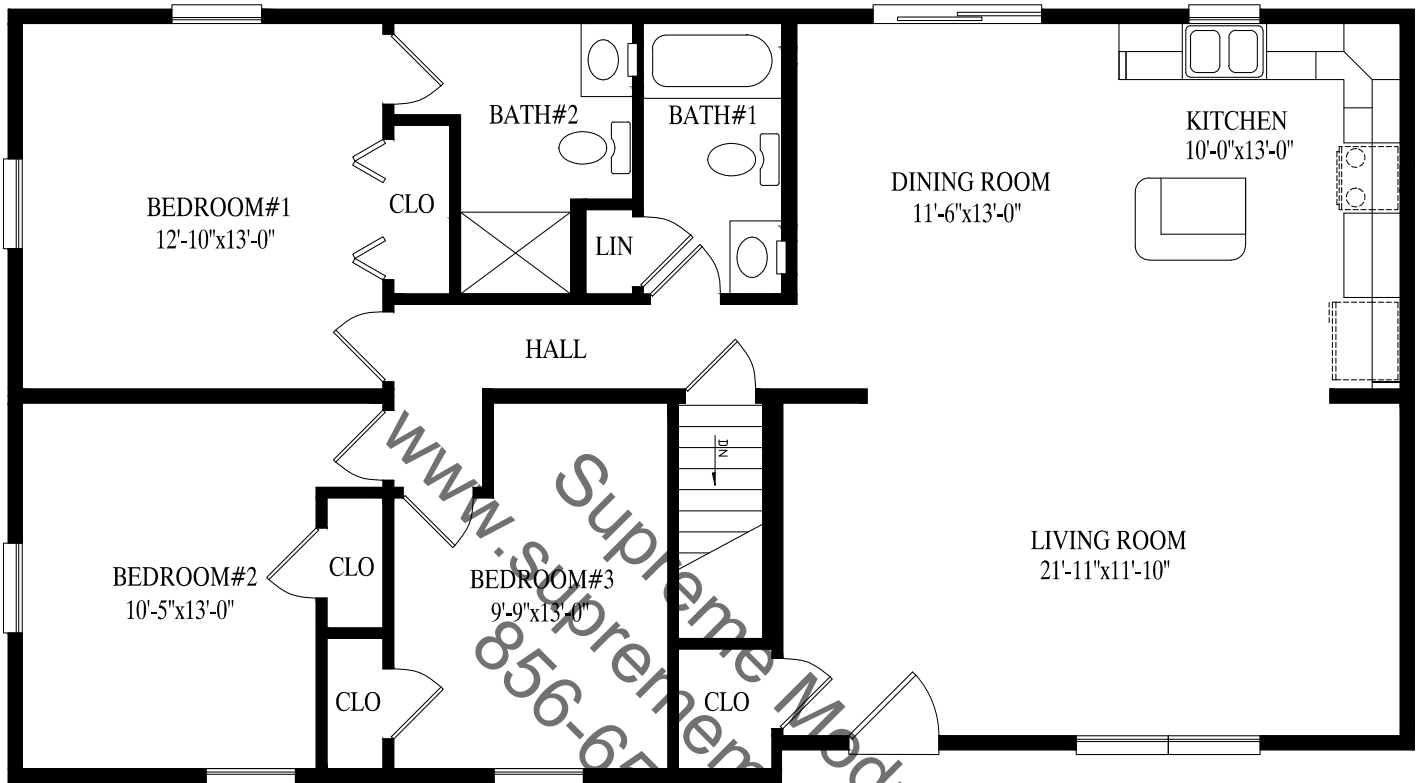
1320 sq. ft.





## Wolf Run

27' 6" x 50' Ranch  
1348 sq. ft.



# WOLF RUN

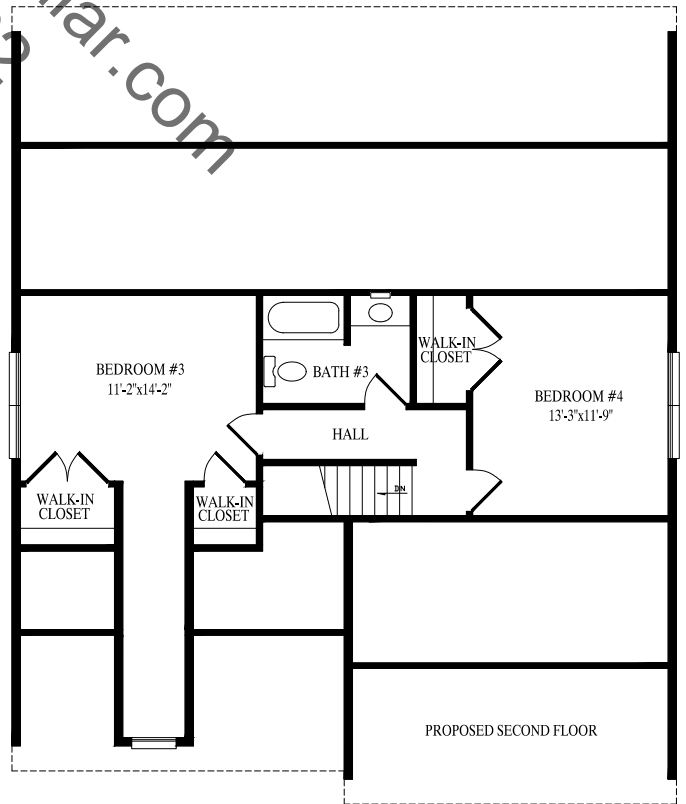
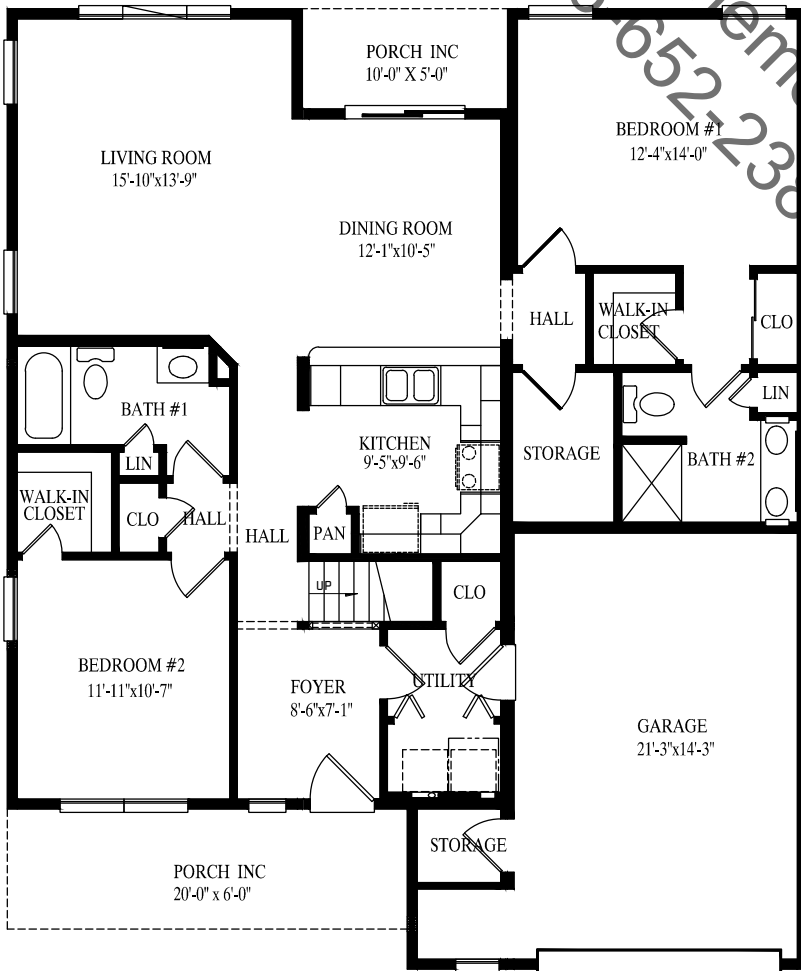
# HEMLOCK HILL



Supreme Modular  
856-652-2382  
suprememodular.com



**Hemlock Hill**  
48' x 40' Ranch  
1370 sq. ft. first floor  
2010 sq. ft. first & second floors

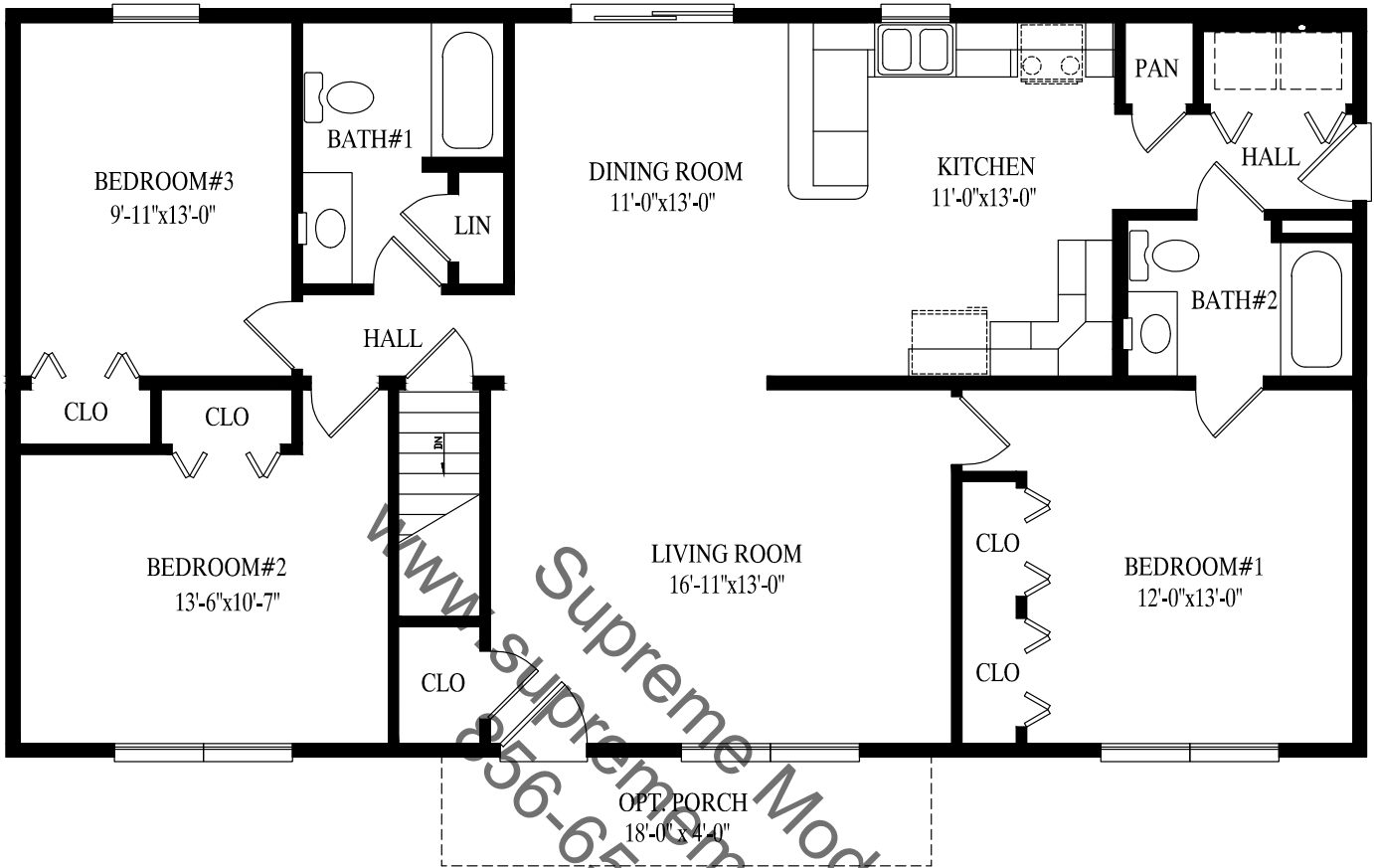




# Briar Ridge

27' 6" x 50' Ranch

1375 sq. ft.



# BRIAR RIDGE

# STONE RIDGE

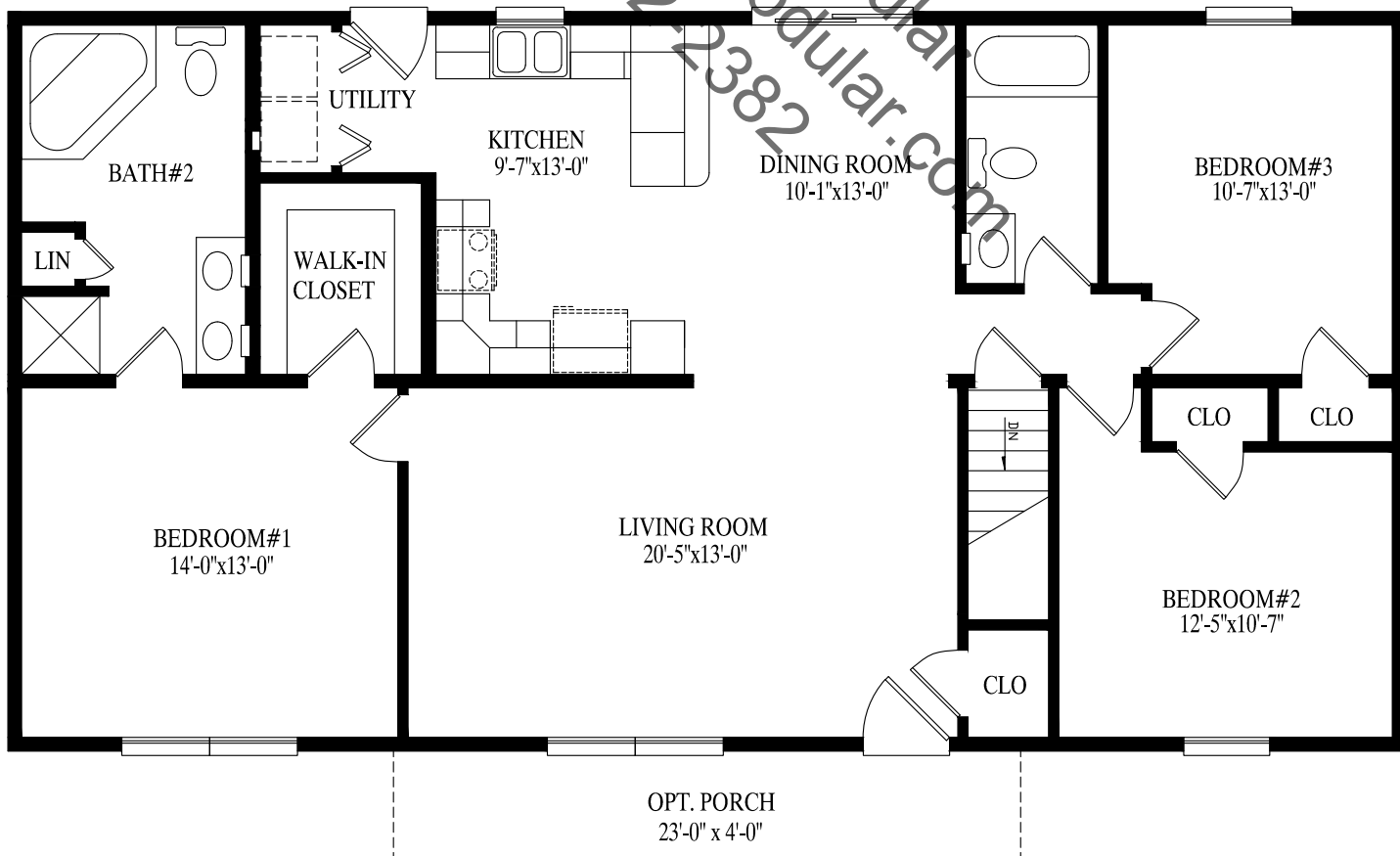


## Stone Ridge

27' 6" x 52' Ranch

1430 sq. ft.

www.suprememodular.com  
856-652-2382  
Supreme Modular



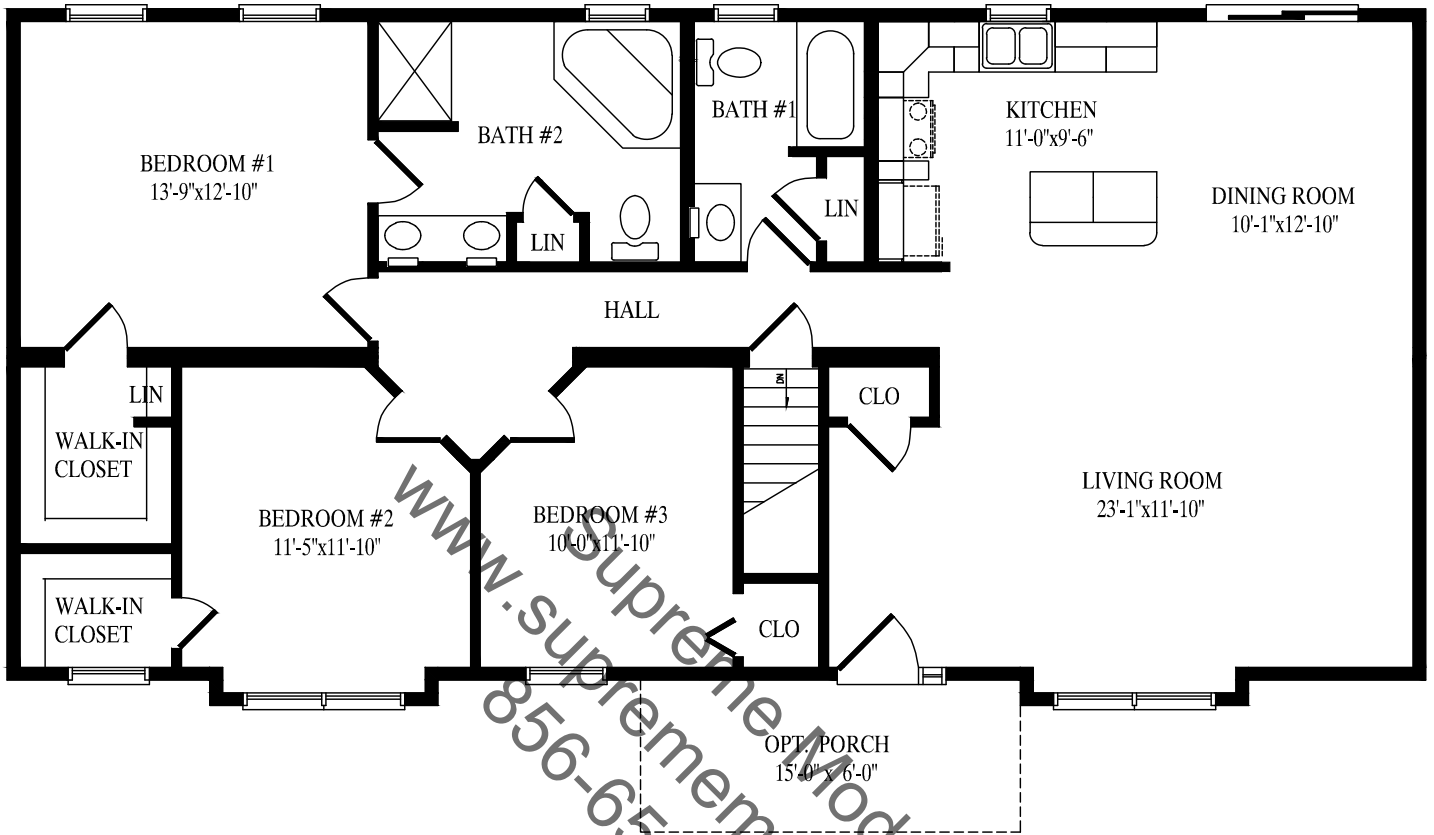




# Timber Ridge

27' 6" x 56' Ranch

1503 sq. ft.



# TIMBER RIDGE

# LAUREL HILL

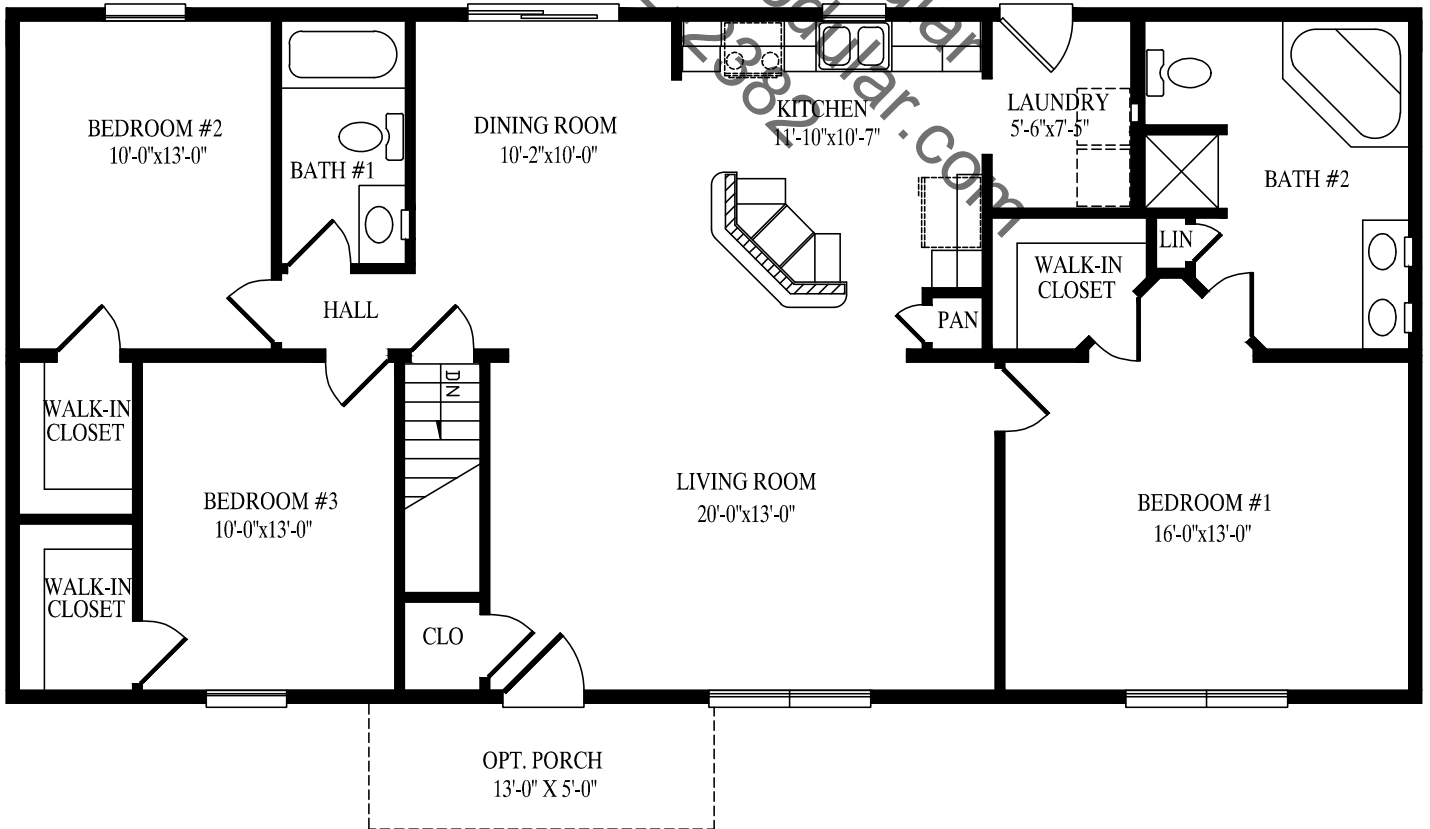


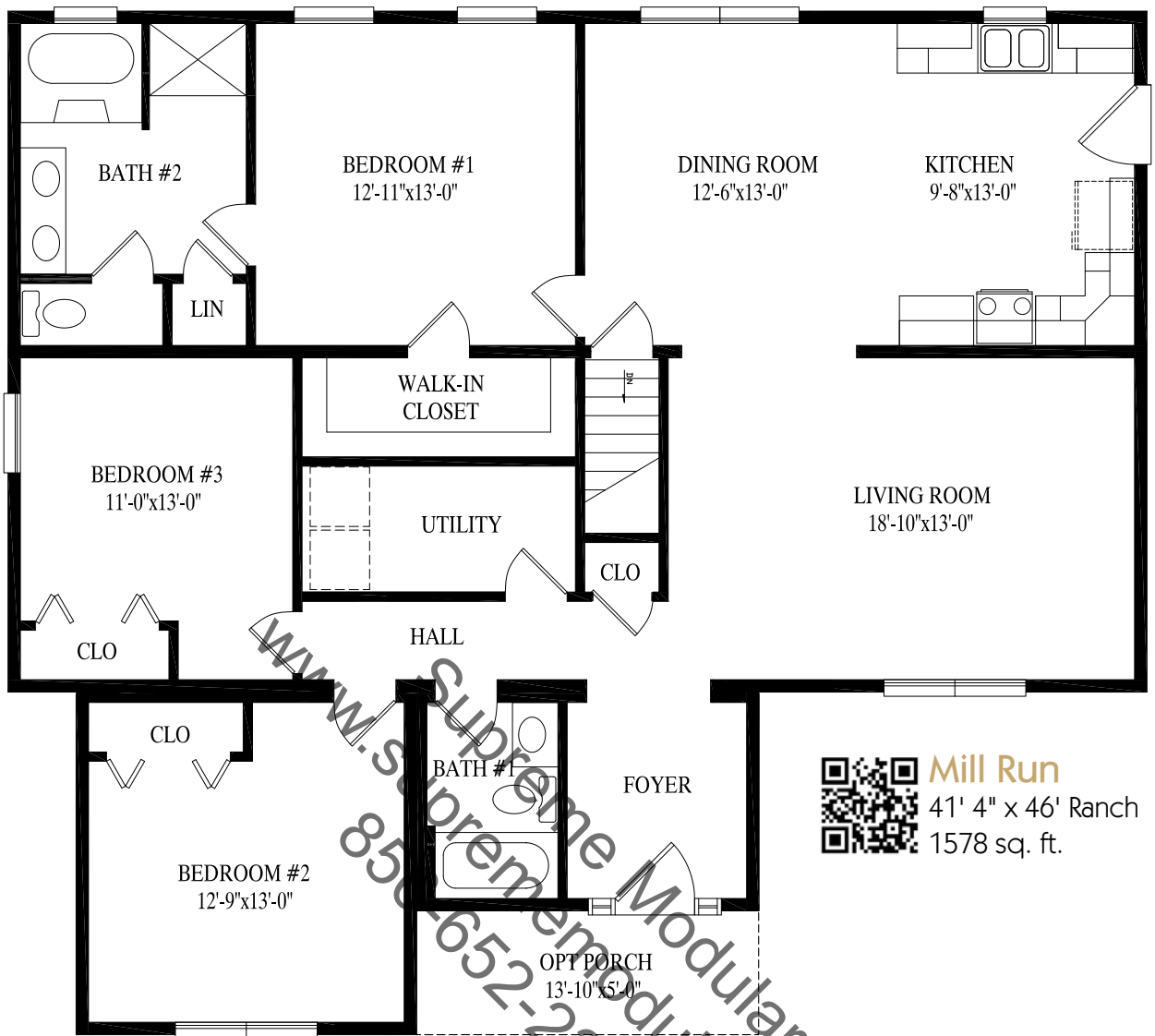
## Laurel Hill

27' 6" x 56' Ranch

1540 sq. ft.

Supreme Modular  
www.suprememodular.com  
856-652-4382





MILL RUN

# MONTOUR

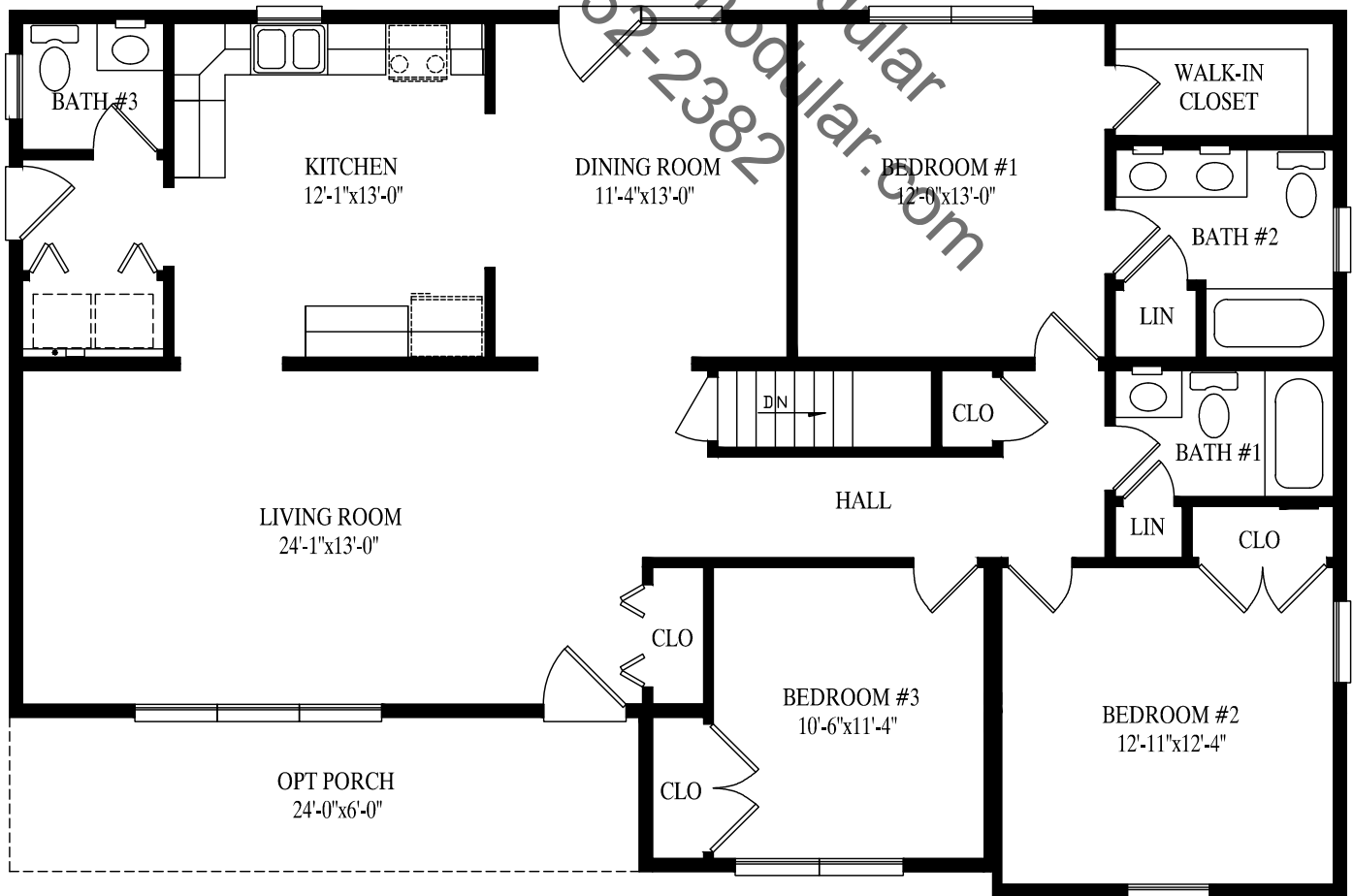


## Montour

34' 6" x 52' Ranch

1608 sq. ft.

Supreme Modular  
www.suprememodular.com  
856-654-2382





# Pebble Creek

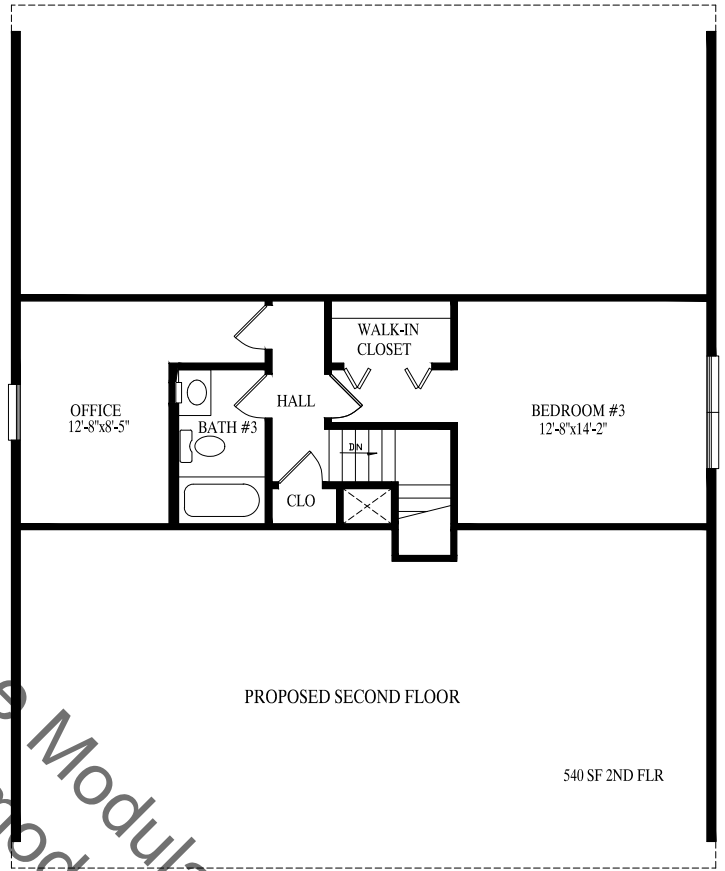
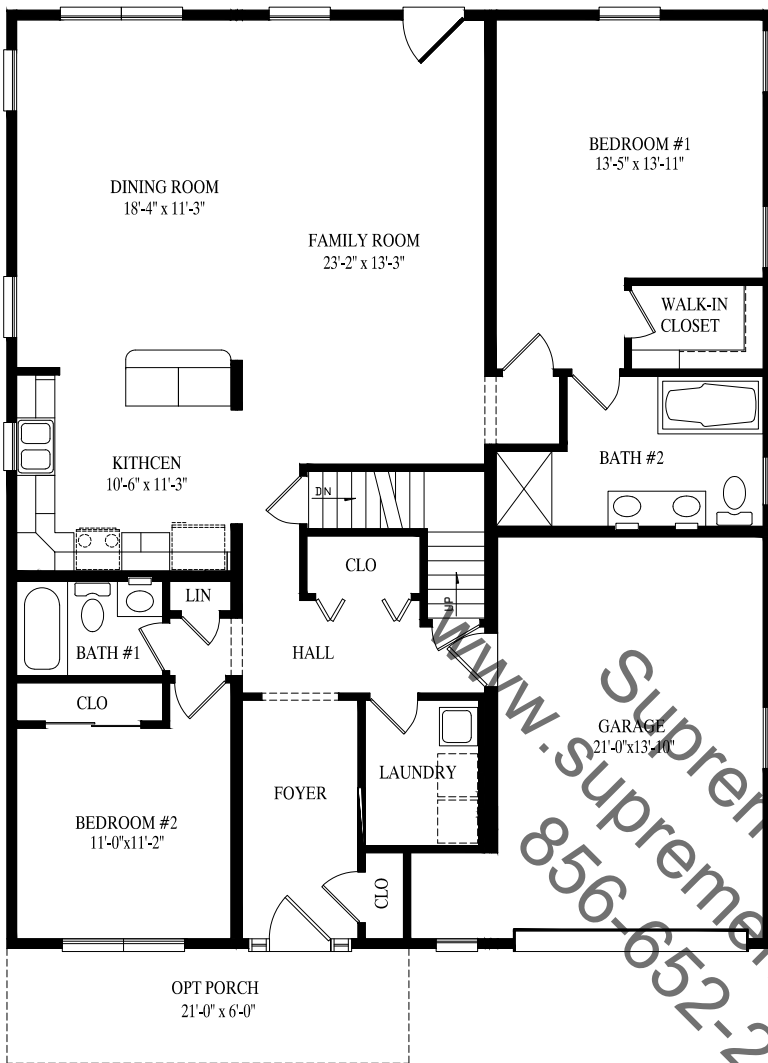
49' x 40' Ranch

1628 living sq. ft. first floor

1960 total sq. ft. first floor

2168 total living sq. ft. first & second floors

2500 total sq. ft. first & second floors



# PEBBLE CREEK

# MEADOW BROOK

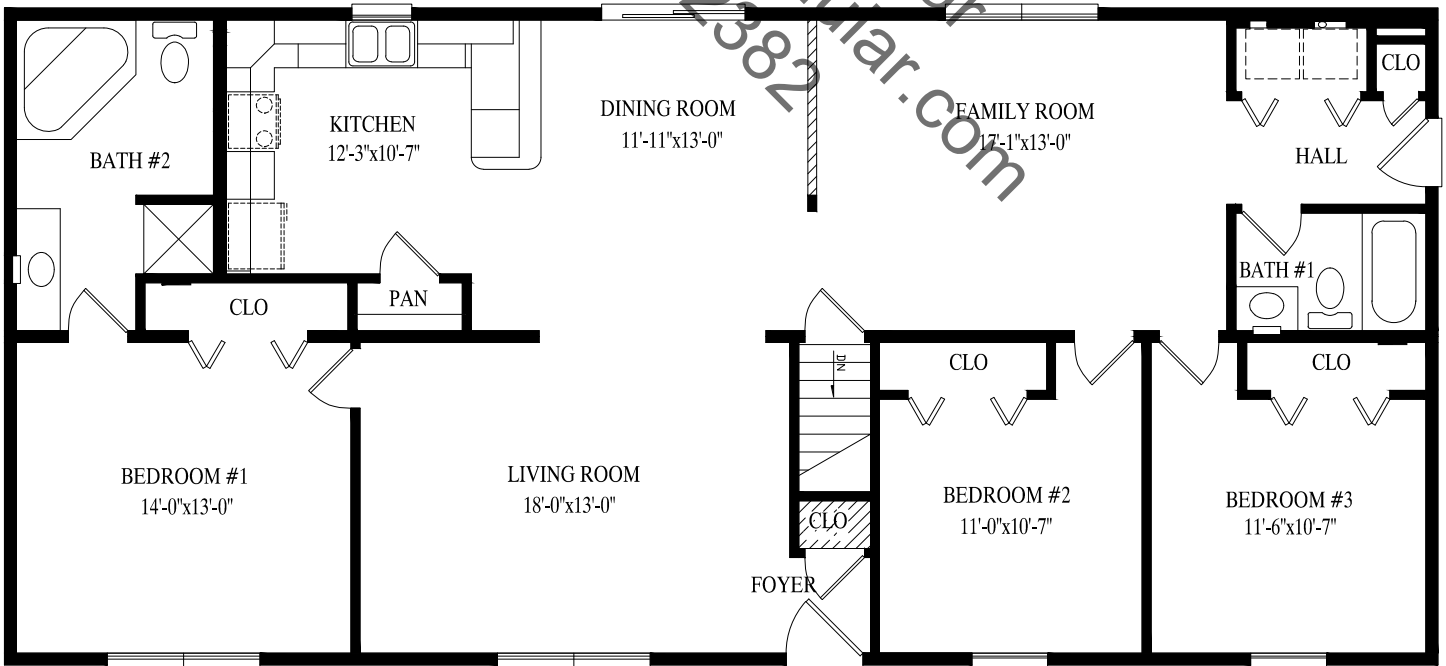


## Meadow Brook

27' 6" x 60' Ranch

1650 sq. ft.

Supreme Modular  
www.suprememodular.com  
856-652-2382

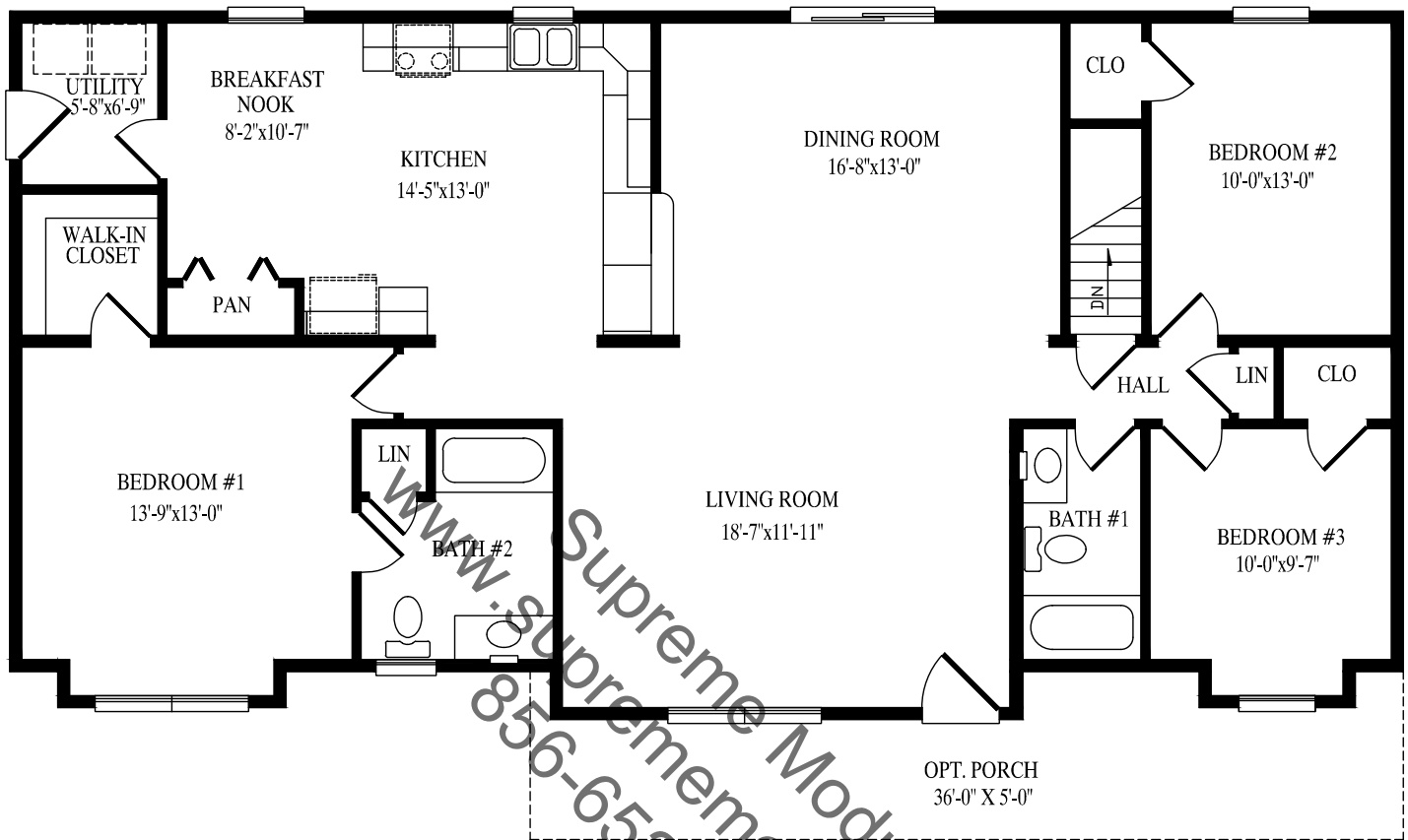




## Cedar Knoll

27' 6" x 58' Ranch

1658 sq. ft.



# CEDAR KNOLL

# MILL BROOK

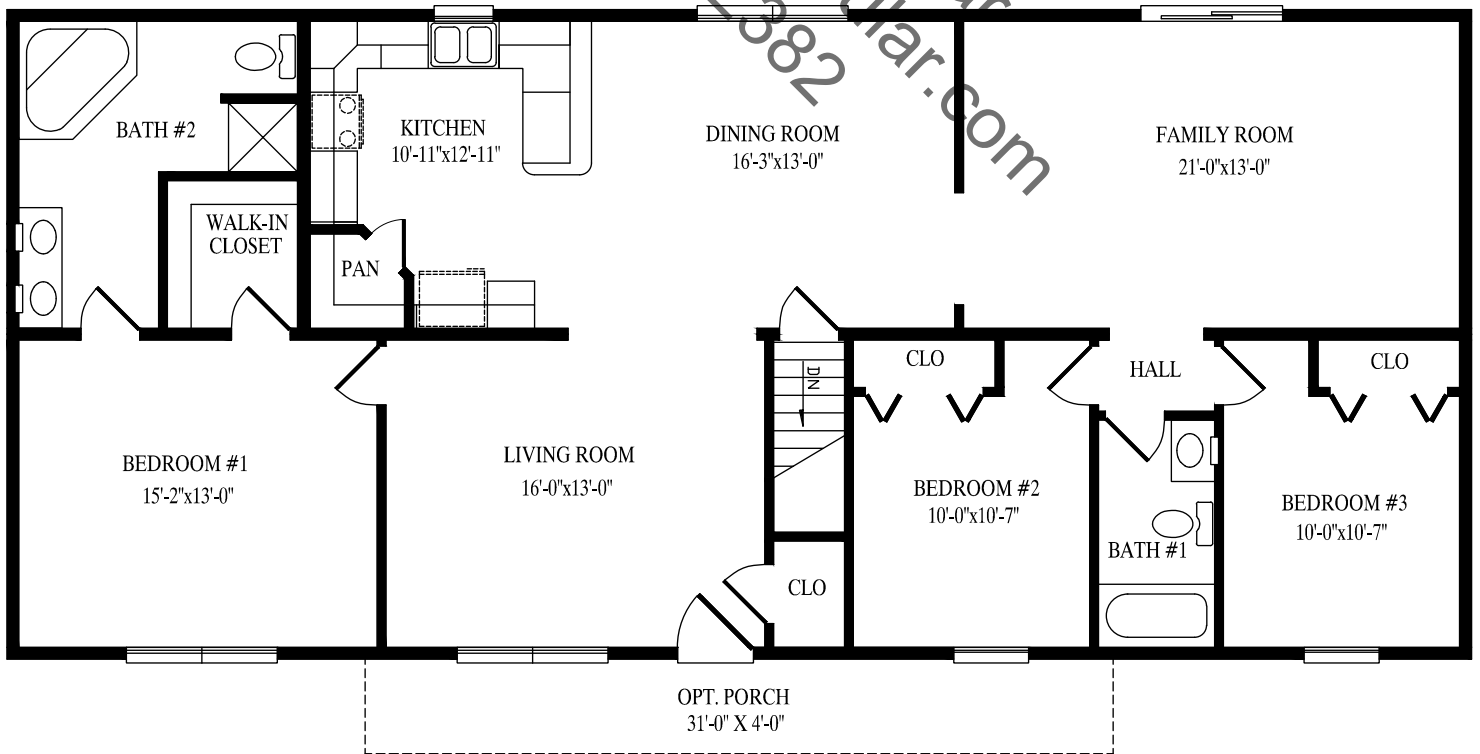


## Mill Brook

27' 6" x 62' Ranch

1705 sq. ft.

Supreme Modular  
www.suprememodular.com  
856-652-2882

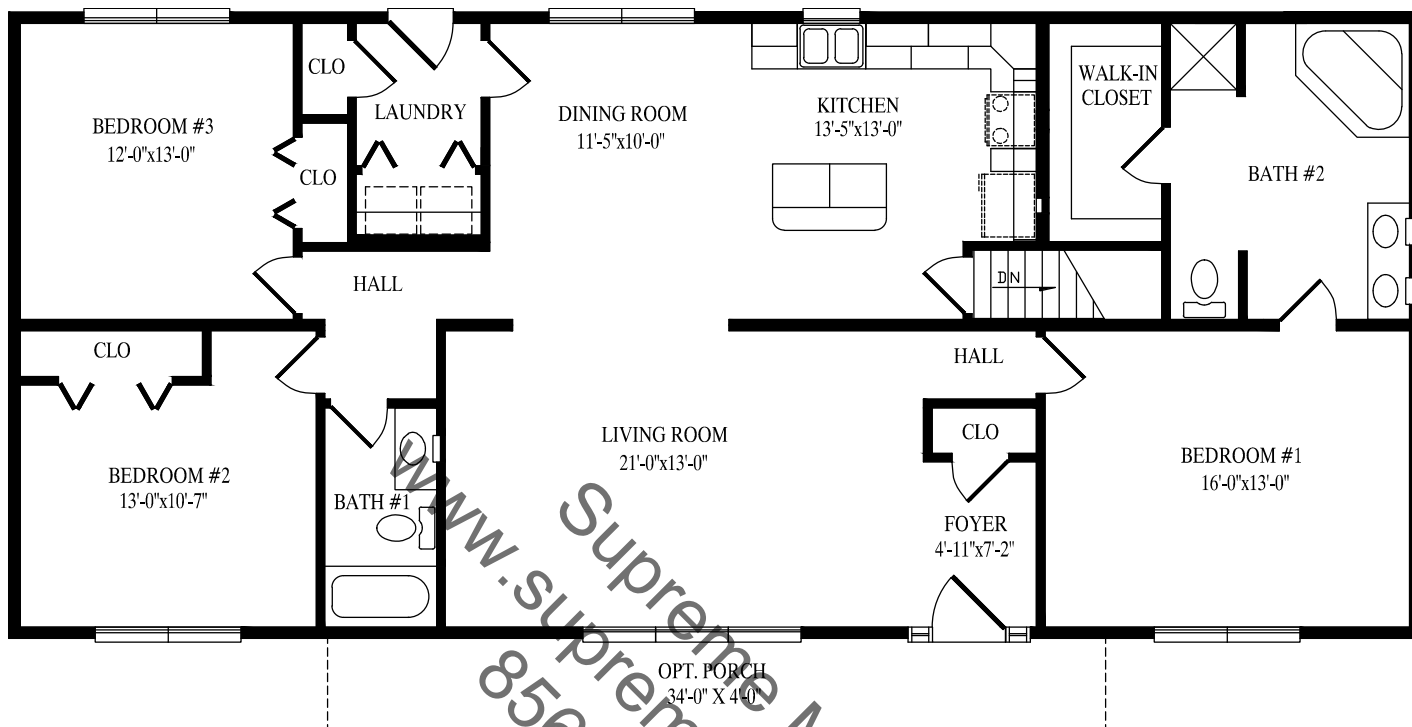




 **Pine Run**

27' 6" x 62' Ranch

1705 sq. ft.



www.suprememodular.com  
856-652-2382  
Supreme Modular



**PINE RUN**

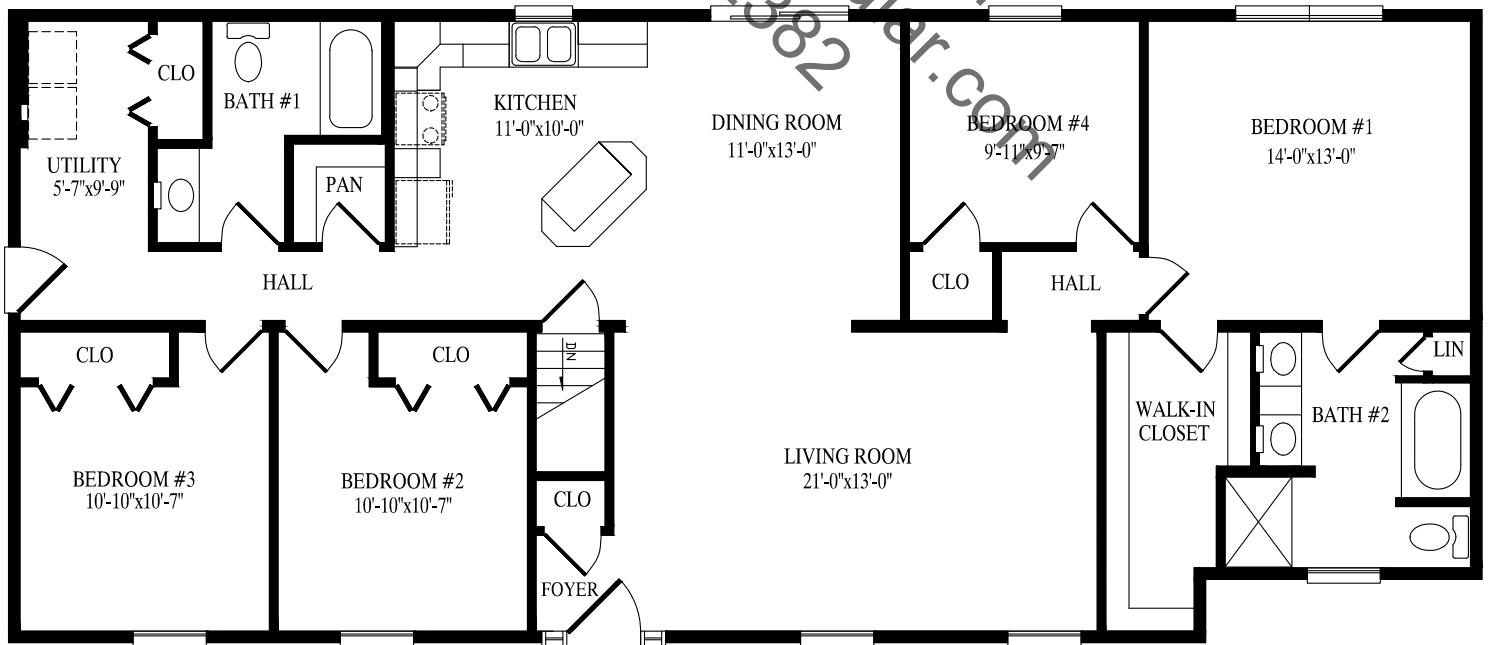
# BROOK PARK

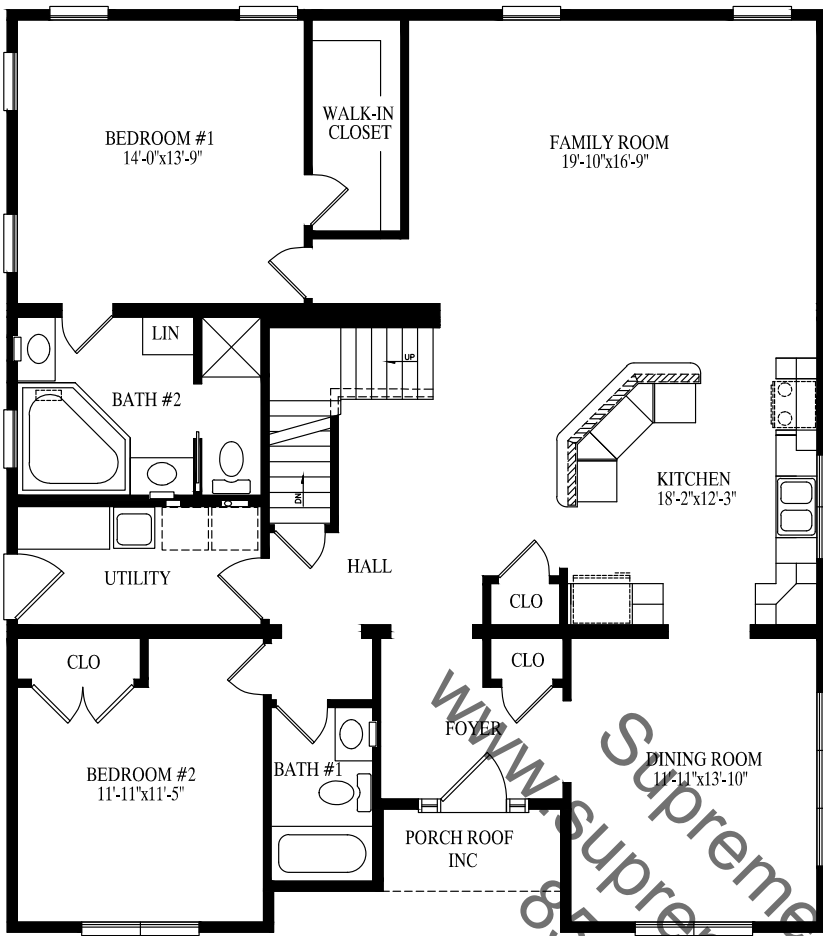


## Brook Park

27' 6" x 64' Ranch  
1727 sq. ft.

Supreme Modular  
www.suprememodular.com  
856-652-2382



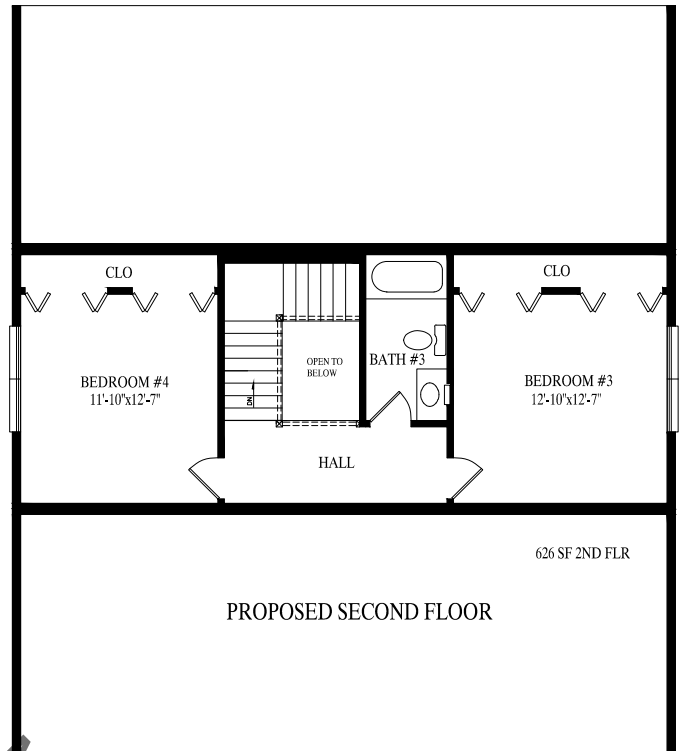


## Spring Grove

45' x 40' Ranch

1737 sq. ft. first floor

2363 sq. ft. first & second floors




www.suprememodular.com  
 856-652-2382  
 Supreme Modular



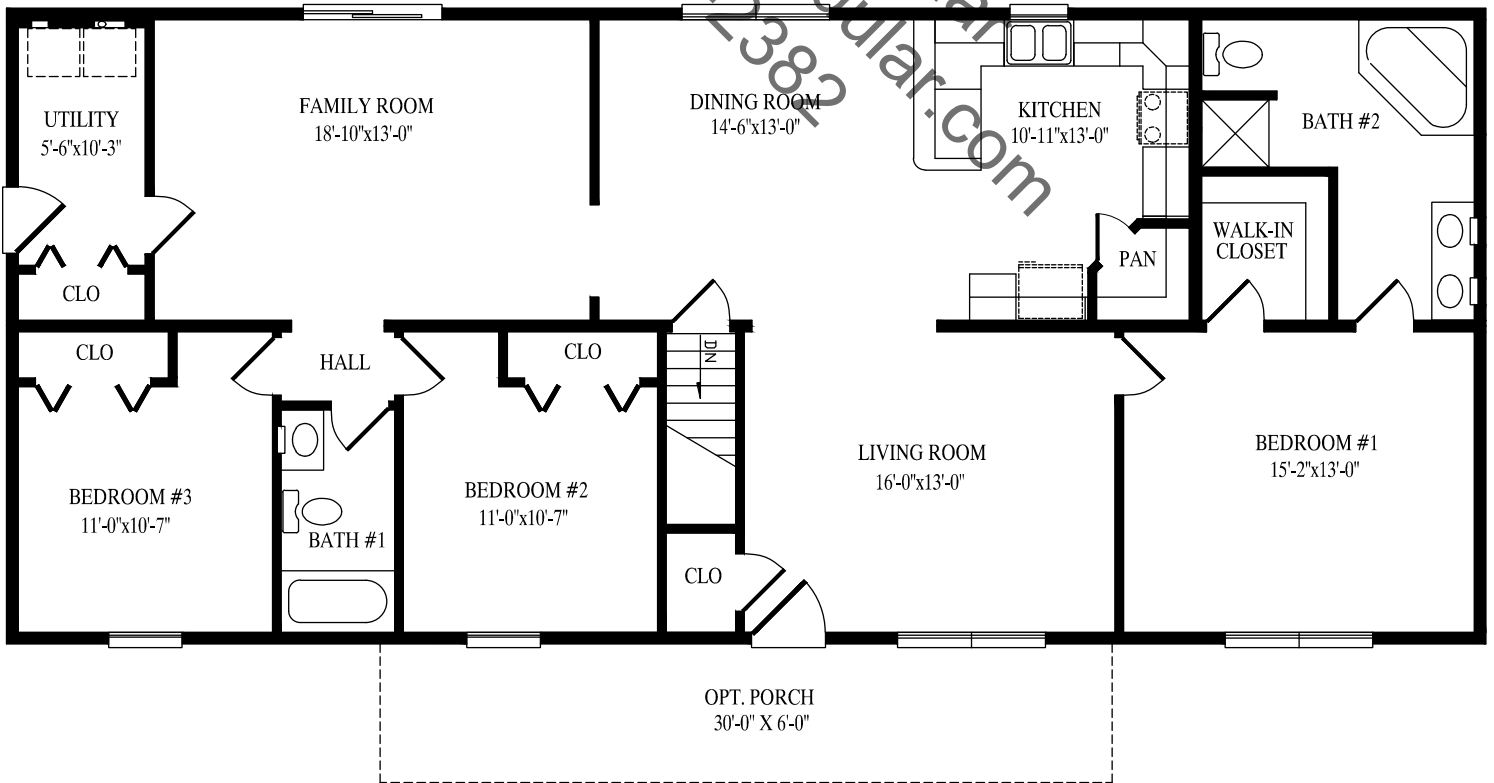
# SPRING GROVE

# WILLOW CREEK




**Willow Creek**  
 27' 6" x 64' Ranch  
 1760 sq. ft.

[www.suprememodular.com](http://www.suprememodular.com)  
 Supreme Modular  
 856-652-2382

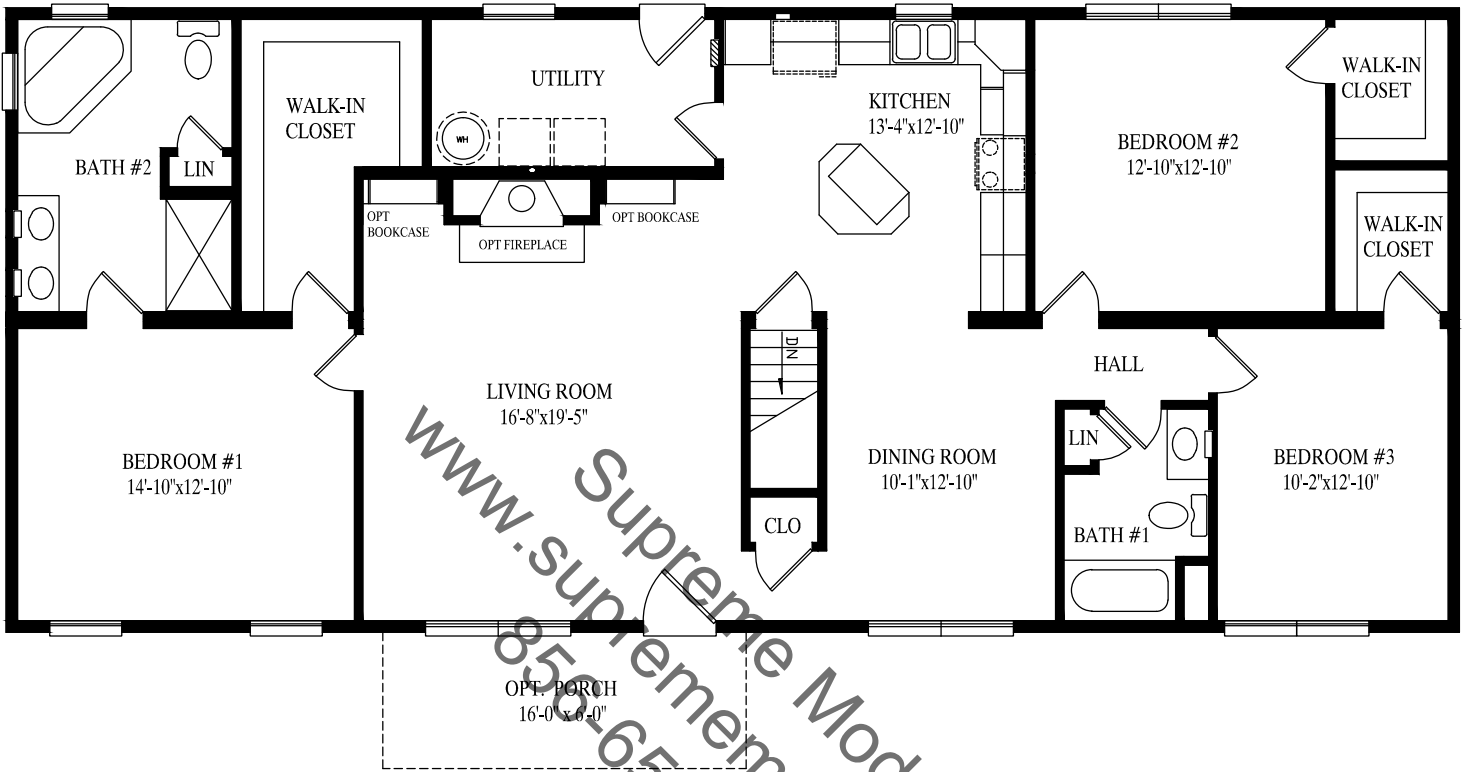




# Walnut Creek

27' 6" x 64' Ranch

1760 sq. ft.



www.suprememodular.com  
 Supreme Modular  
 856-652-2382



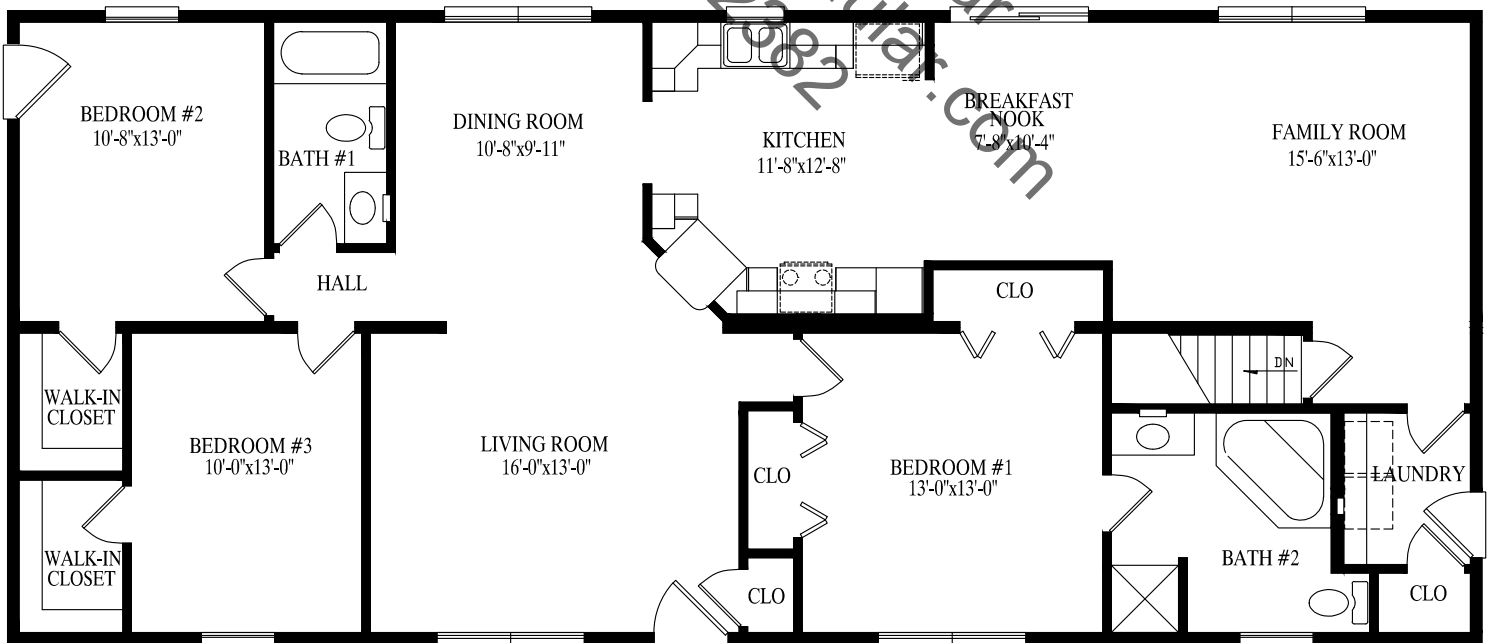
WALNUT CREEK

# ORCHARD HILL



**Orchard Hill**  
27' 6" x 64' Ranch  
1760 sq. ft.

Supreme Modular  
www.suprememodular.com  
856-652-2382

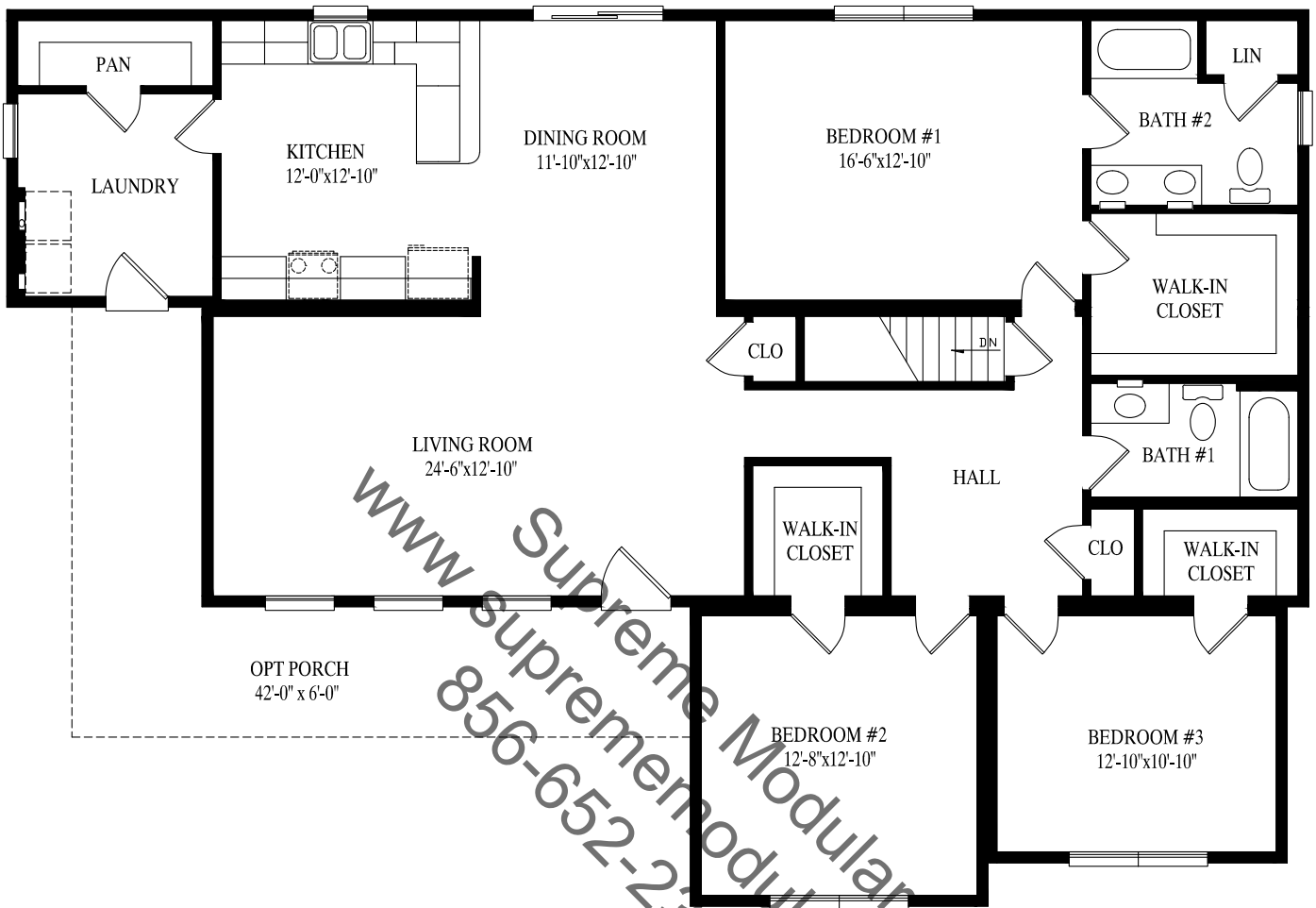




# Boones Creek

41' 4" x 60' Ranch

1870 sq. ft.



# BOONES CREEK

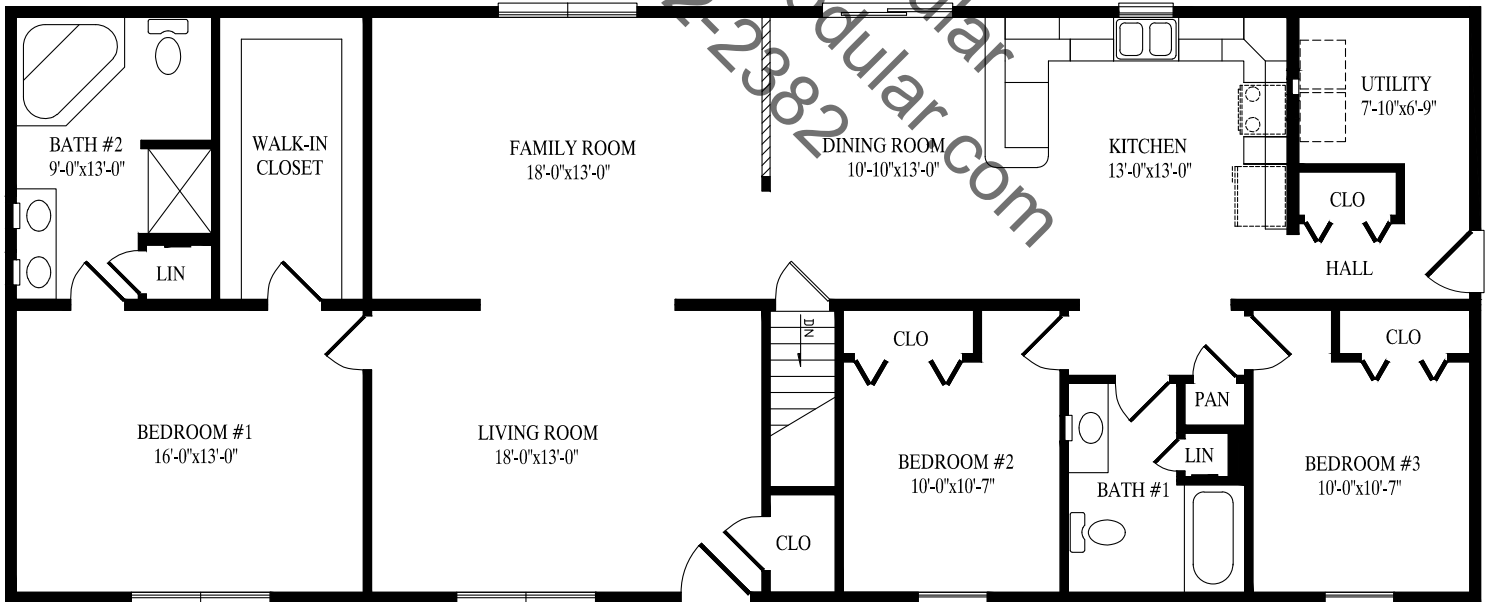
# FOX HILL



## Fox Hill

27' 6" x 68' Ranch  
1870 sq. ft.

Supreme Modular  
www.suprememodular.com  
856-652-2382



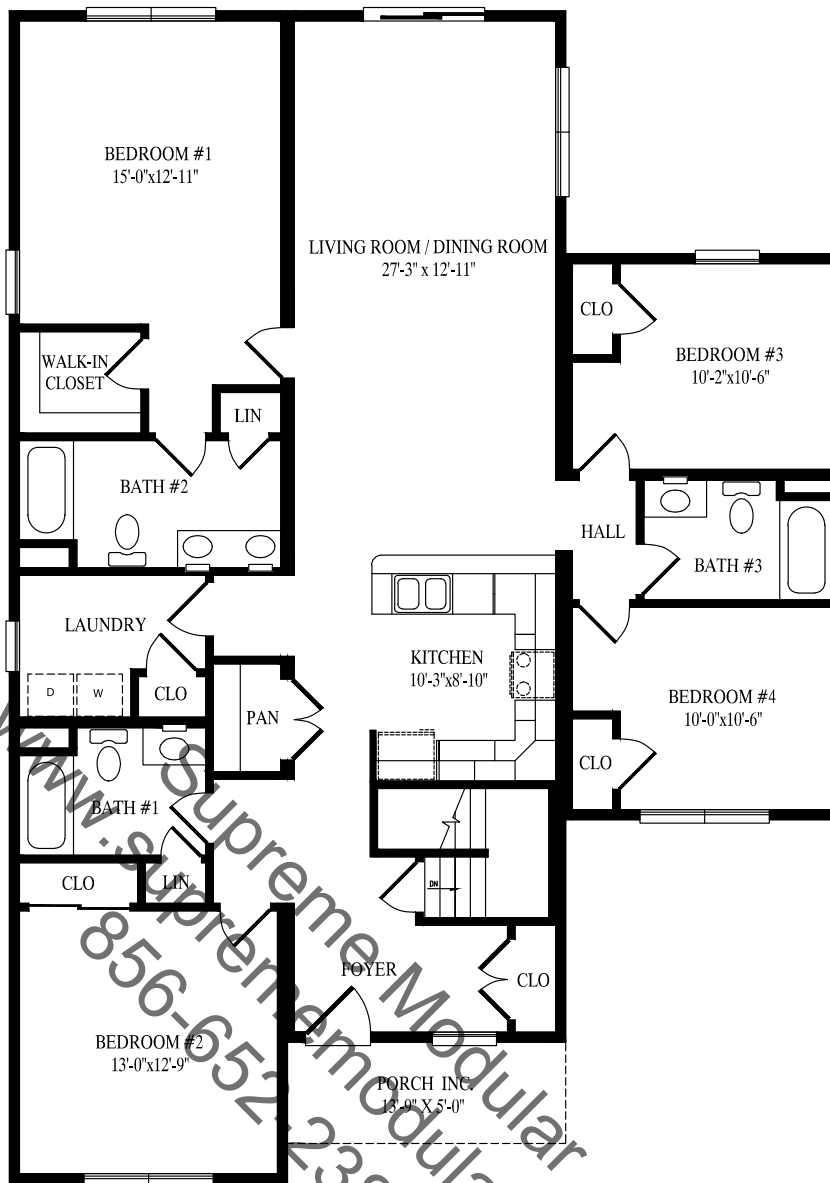




# Crystal Creek

58' x 41' Ranch

1885 sq. ft.



# CRYSTAL CREEK

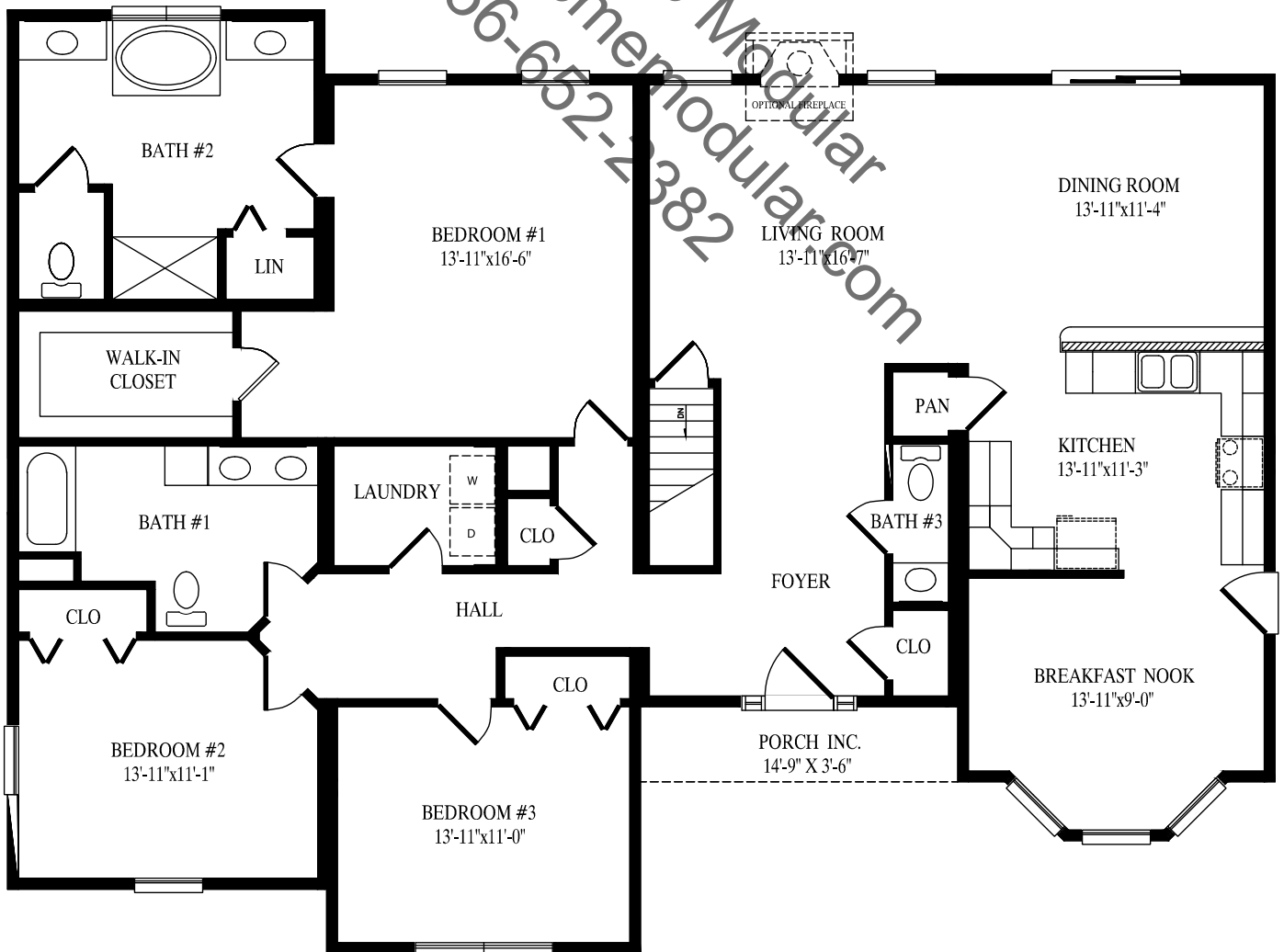
# SOUTH HILL



## South Hill

44' x 59' 1" Ranch  
2155 sq. ft.

www.suprememodular.com  
856-652-2382  
Supreme Modular



# Popular Exterior Options...



Single Unit Extension



Bump Out



Reverse Gable



Reverse Gable w/Extension



Dormers



Set Back



Decorative Shingle Return



Shed Dormer



Porch Roof

Great Homes Start With Quality Products...



NOTE: All renderings are artist's concepts only and may vary from actual home.



Supreme Modular  
3040 White Horse Pike  
Hammonton, NJ 08037  
[www.suprememodular.com](http://www.suprememodular.com)

Supreme Modular  
3040 White Horse Pike  
Hammonton, NJ 08037  
[www.suprememodular.com](http://www.suprememodular.com)  
856-652-2382