

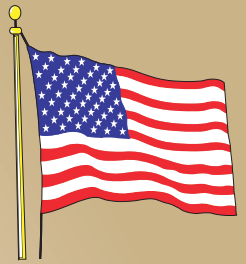
Building
AMERICA'S
Future... Today!



www.SupremeModular.com
856-652-2382

Supreme Modular
3040 White Horse Pike
Hammonton, NJ 08037

Vacation Homes

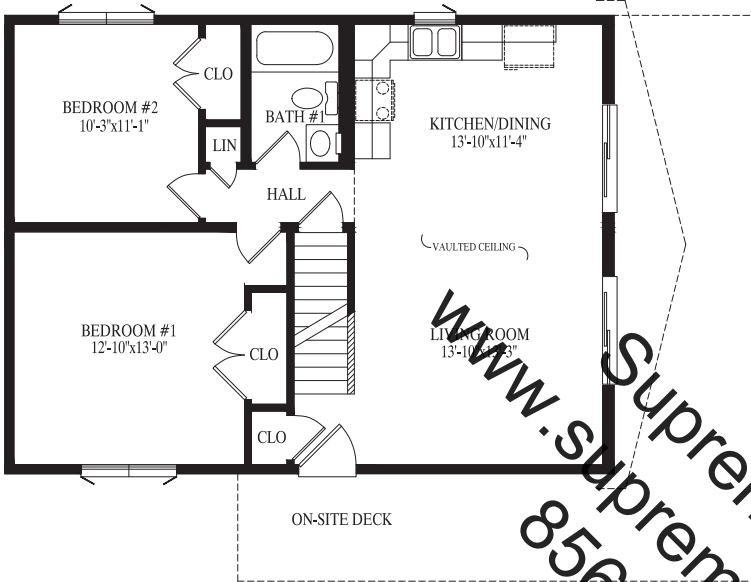


Made in USA

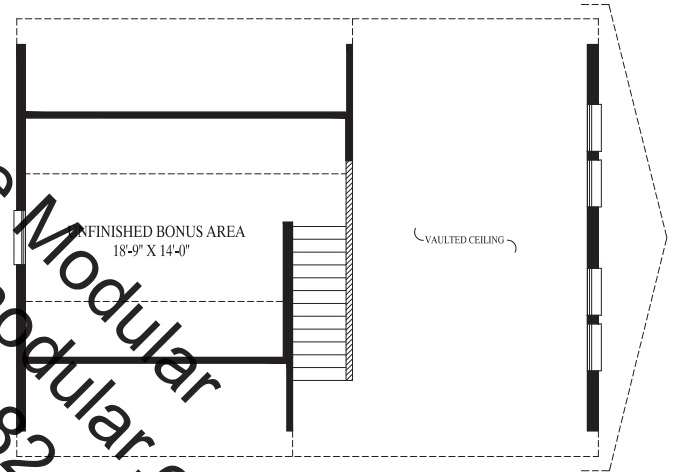
SOMERSET I



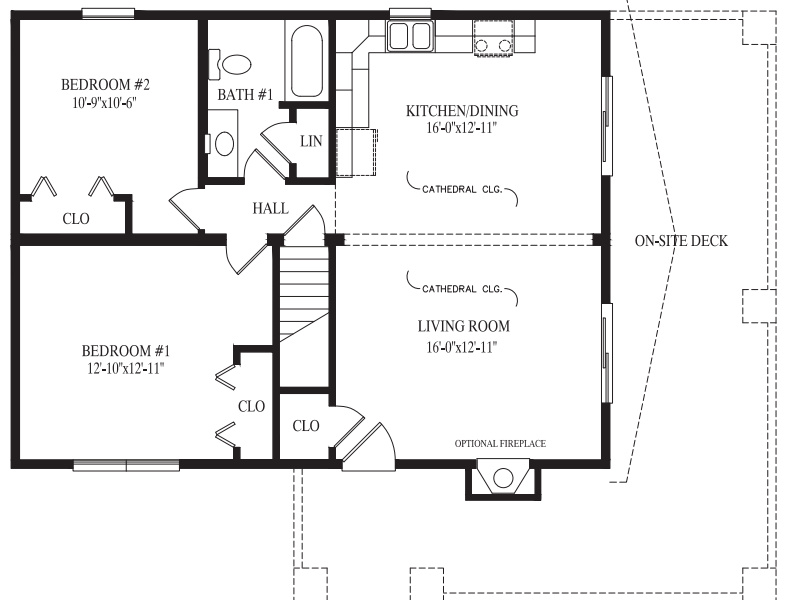
Somerset I
 25' 7" x 34'
 870 sq. ft. first floor
 287 sq. ft. unfinished
 second floor



Featured on the rear cover



Aspen
 27' 6" x 36'
 993 sq. ft.



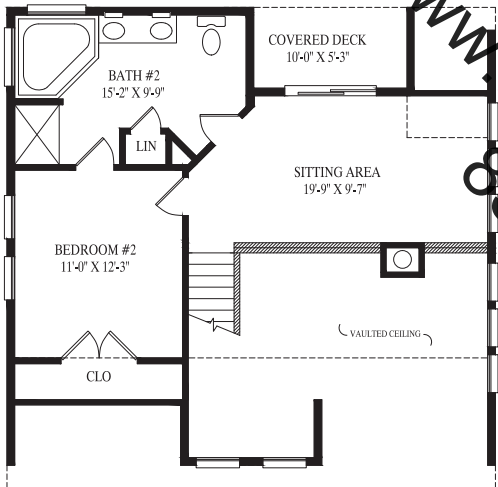
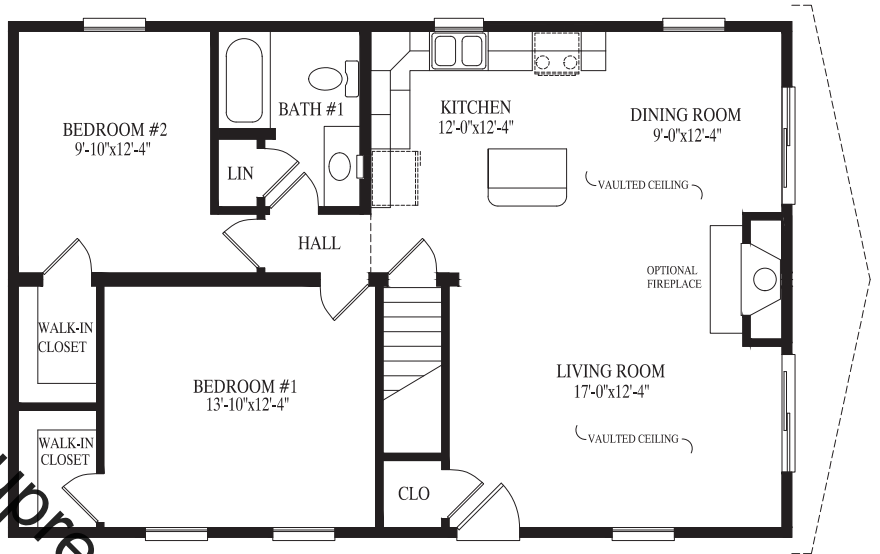
Supreme Modular
www.suprememodular.com
 856-652-2382
ASPEN



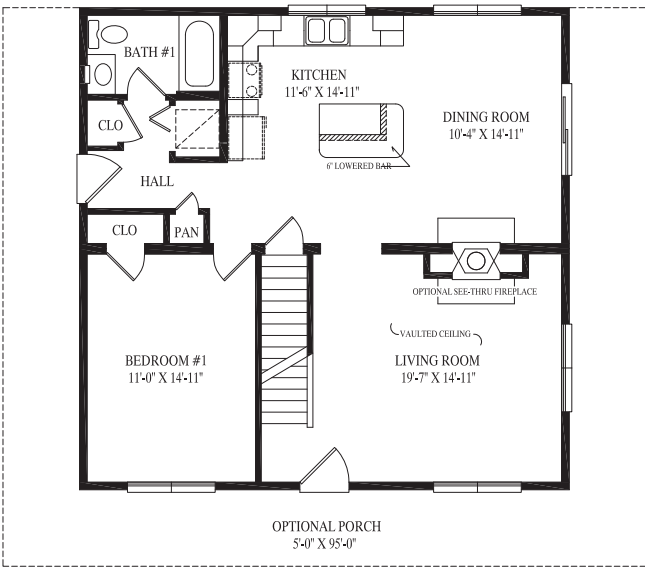
BRYCE



Bryce
 26' 4" x 40'
 1053 sq. ft.

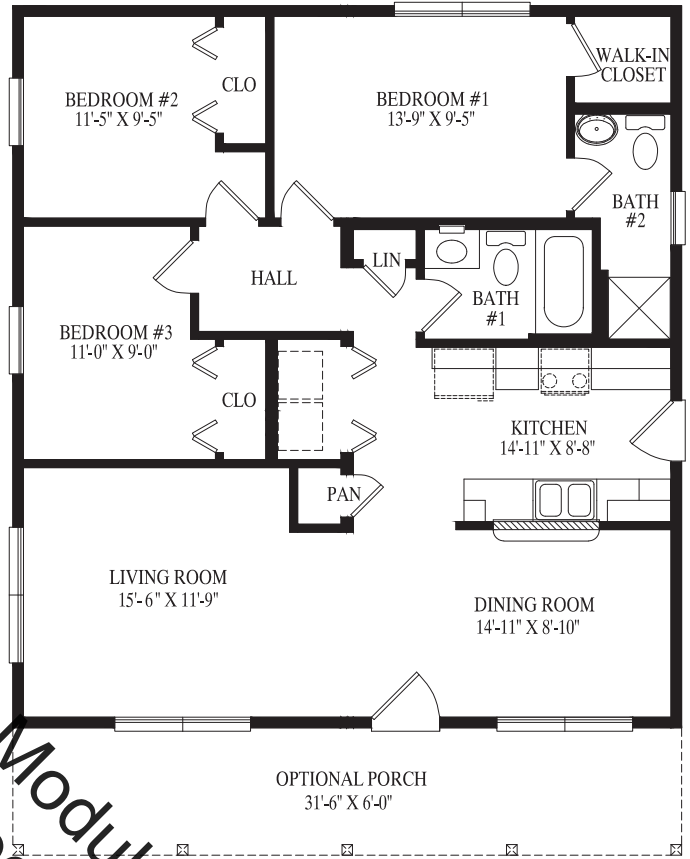


www.suprememodular.com
 856-654-2382
 Pike
 11'-6" x 39'
 1008 sq. ft. first floor
 330 sq. ft. proposed second floor
 1338 total sq. ft.



Featured on the front cover

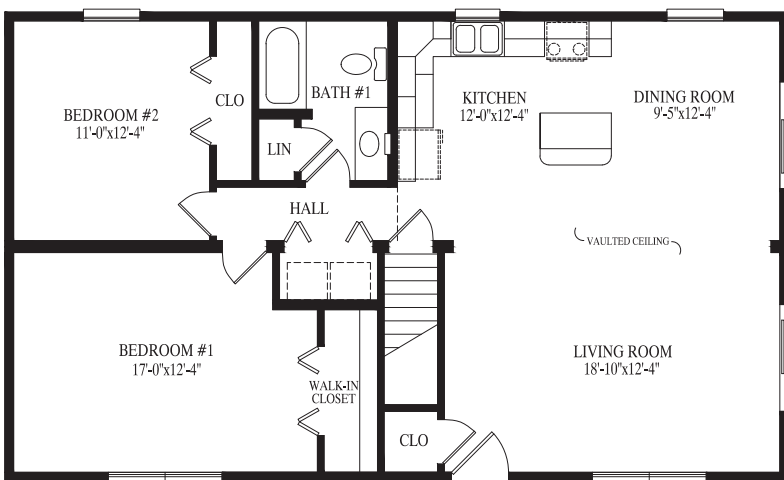
BRIDGETOWN



Bridgetown
 33'-6" x 34'-0"
 1074 sq. ft.

www.SupremeModular.com
 856-652-2382

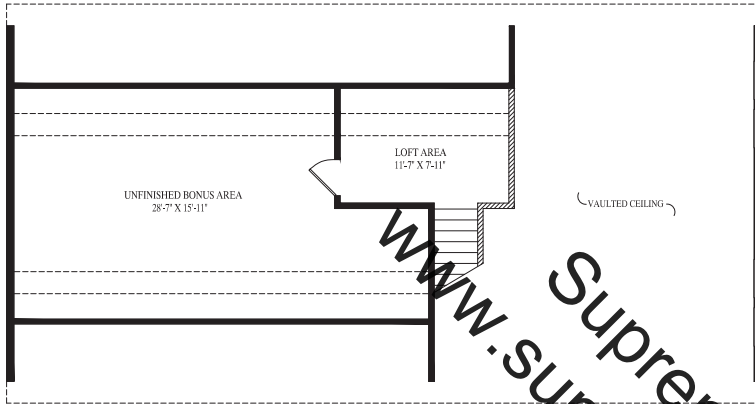
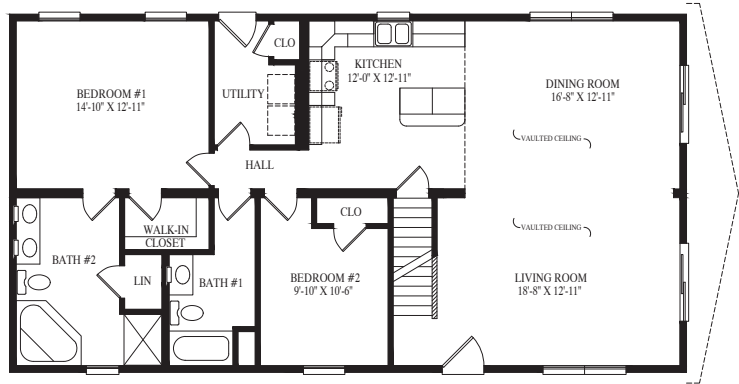
MAVERICK



Maverick
 26' 4" x 44'
 1158 sq. ft.



TISBURY



Tisbury

27' 6" x 52'

1430 sq. ft. first floor

501 sq. ft. unfinished second floor

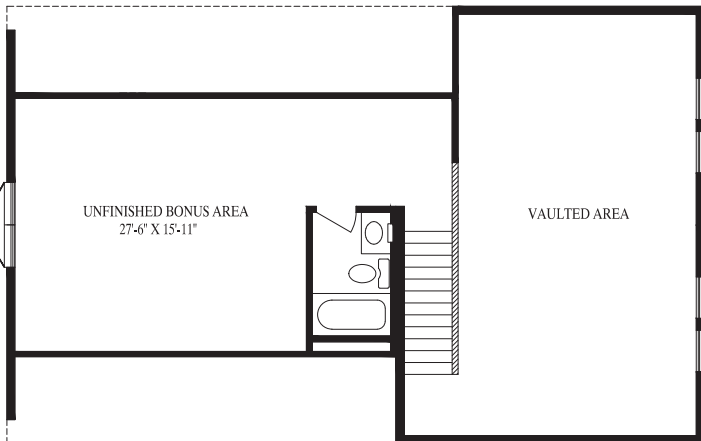
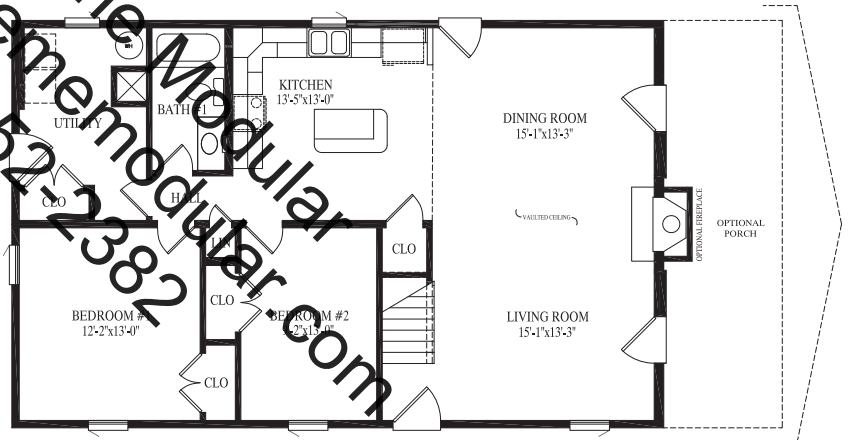


Somerset II

27' 6" x 44'

1210 sq. ft. first floor

440 sq. ft. unfinished second floor



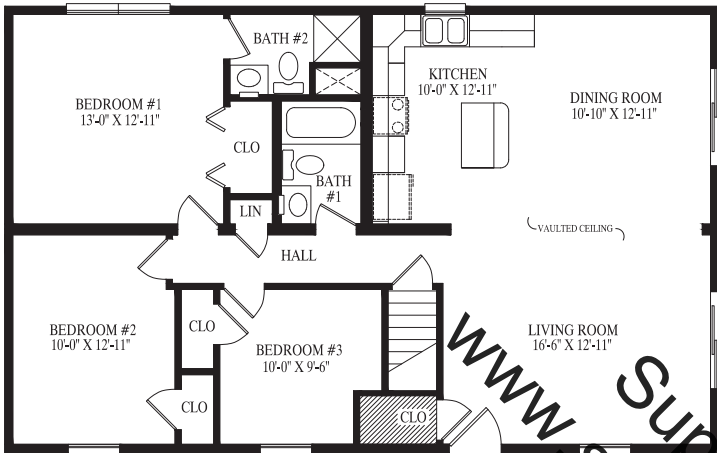
SOMERSET II

KENNEBUNK

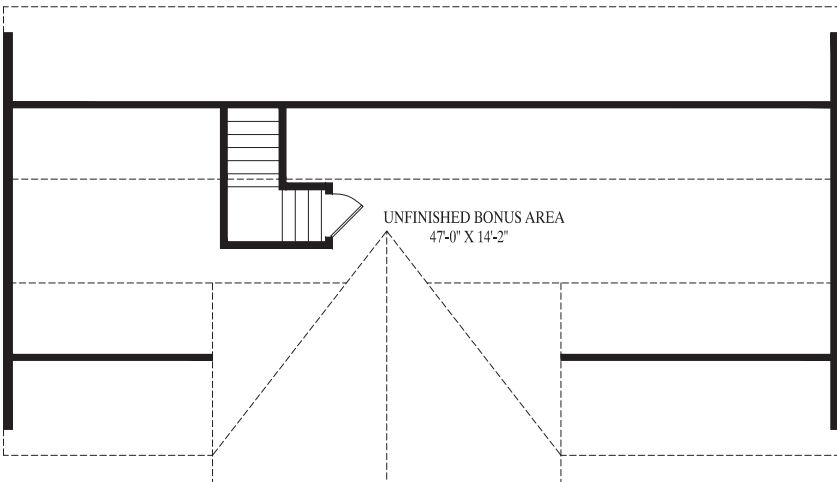
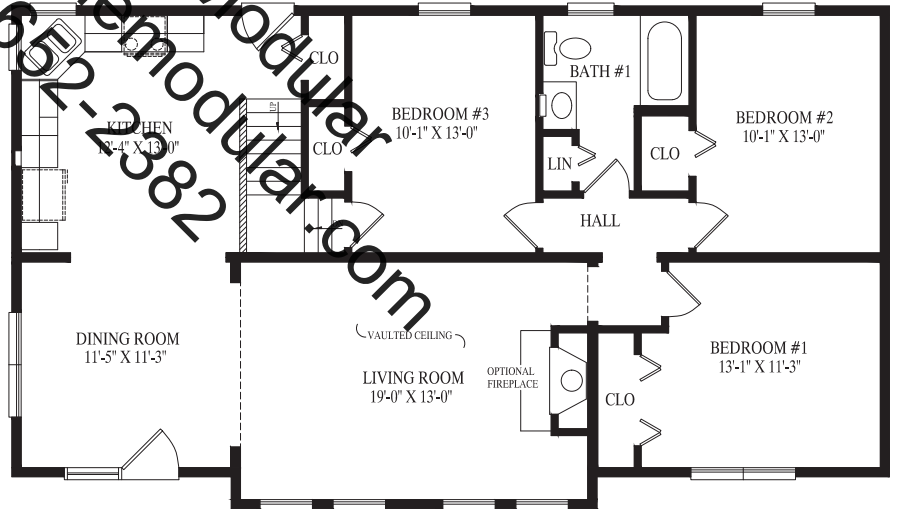


Kennebunk

27' 6" x 44'
1210 sq. ft.



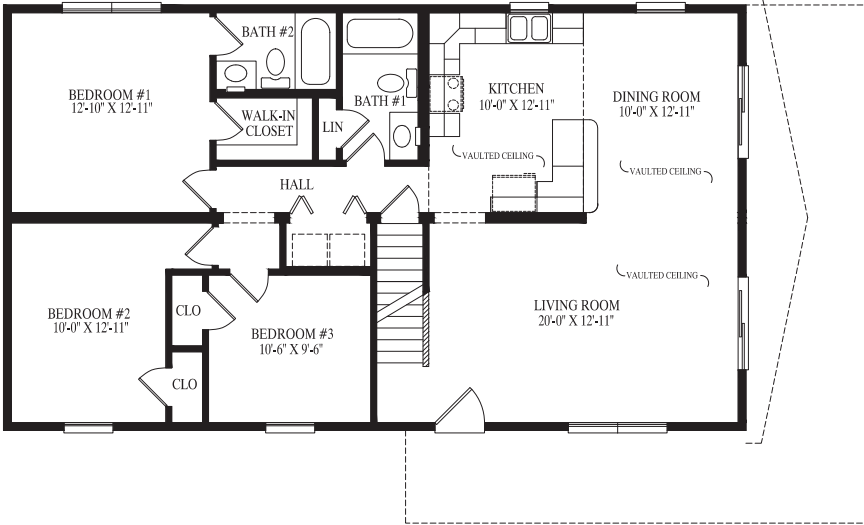
ADIRONDACK



Adirondack

27' 6" x 46'
1271 sq. ft. first floor
712 sq. ft. proposed second floor

BOOTH BAY



Booth Bay

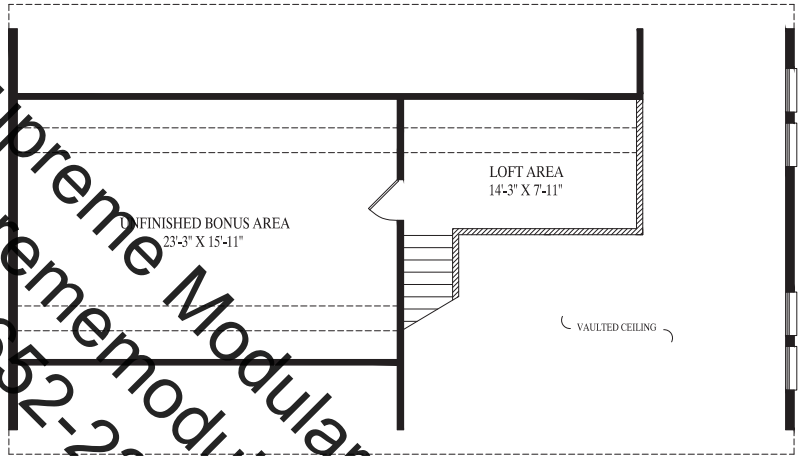
27' 6" x 48'

1320 sq. ft. first floor

526 sq. ft. unfinished second floor



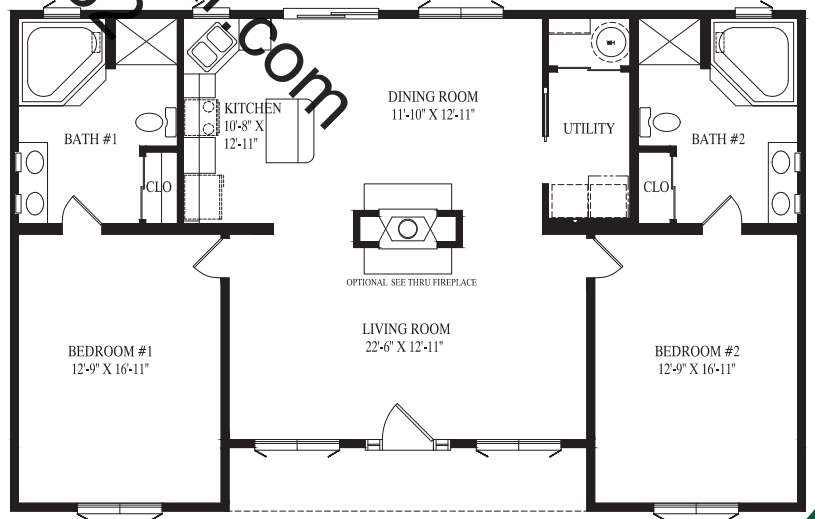
www.suprememodular.com
 856-652-2382
 Supreme Modular



Twin Peaks

31' 6" x 50'

1485 sq. ft.



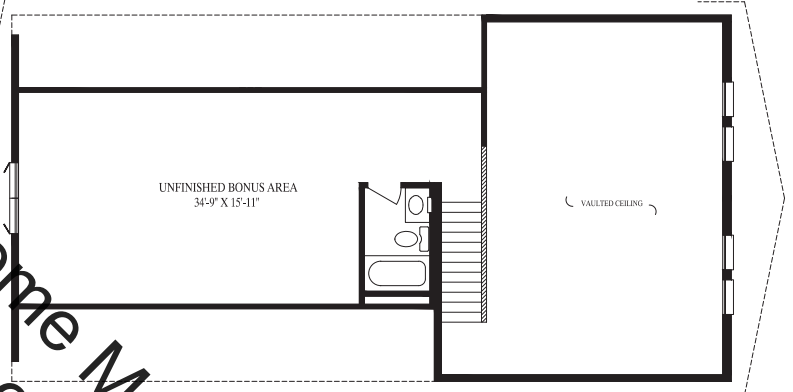
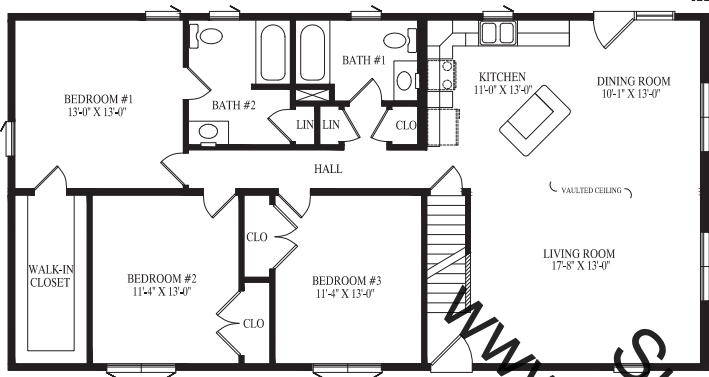
TWIN PEAKS

SOMERSET III

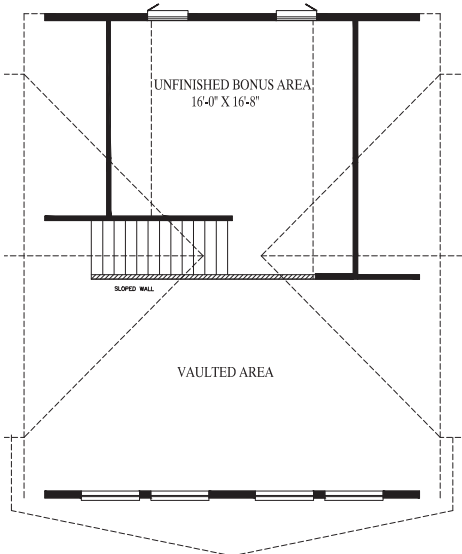
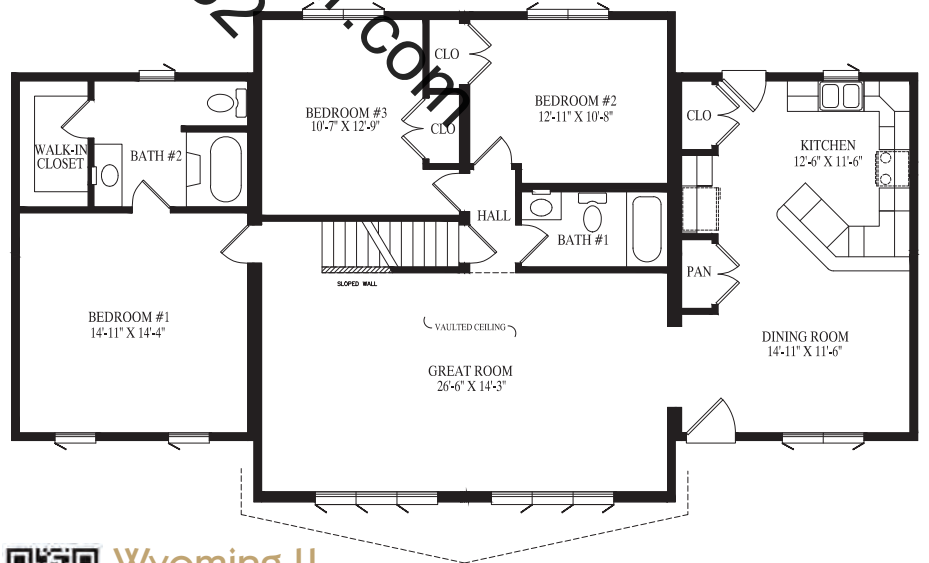


Somerset III

27' 6" x 54'
 1485 sq. ft. first floor
 590 sq. ft. proposed
 second floor



www.suprememodular.com
 856-652-2101
 Supreme Modular II
 Wyoming II

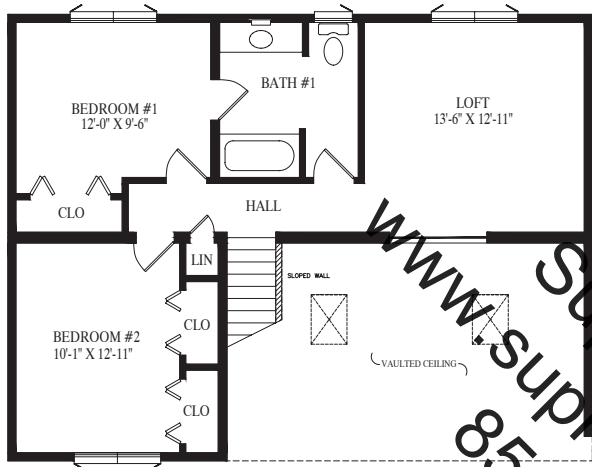
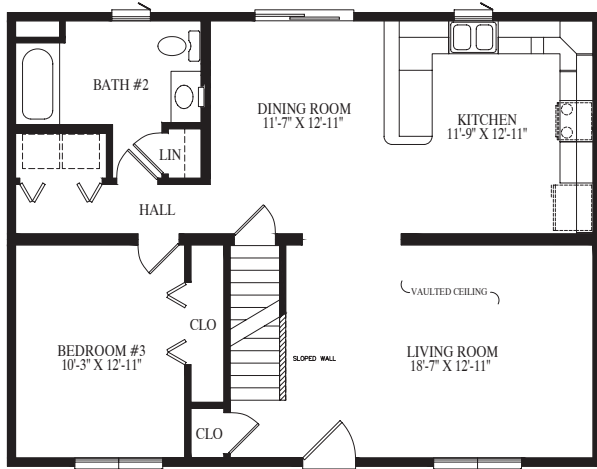


Wyoming II

32' x 59' 2"
 1641 sq. ft. first floor
 290 sq. ft. unfinished second floor



MONTEREY



Monterey

27' 6" x 36'

990 sq. ft. first floor

688 sq. ft. second floor

1678 sq. ft. total

www.suprememodular.com
856-652-2382

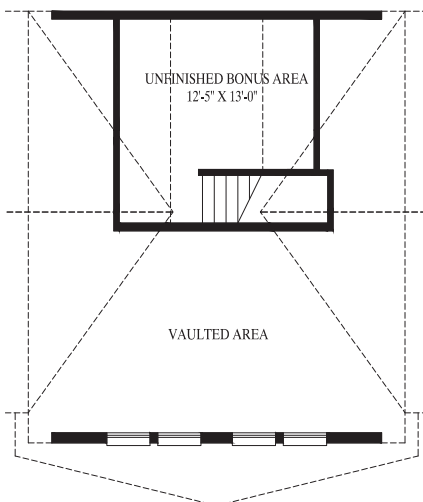
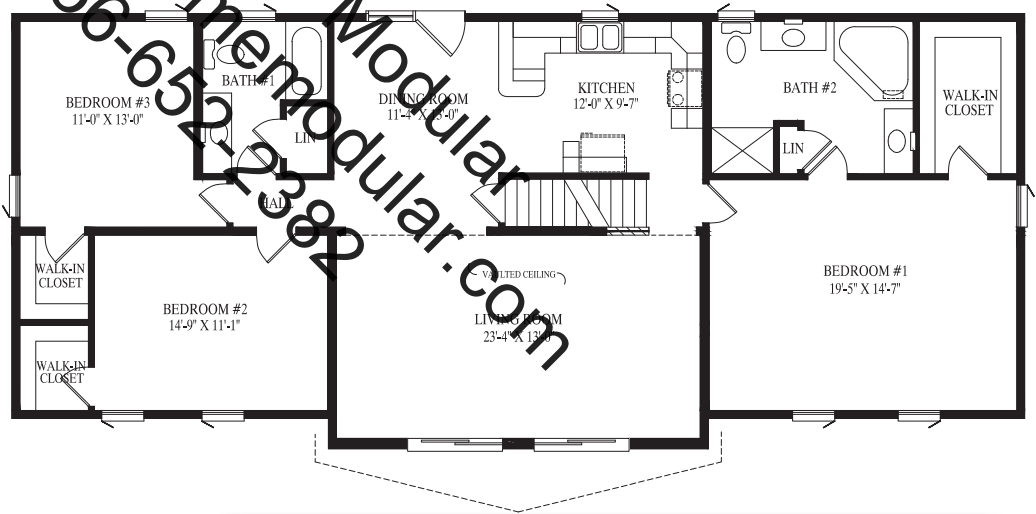


Wyoming I

27' 6" x 64'

1683 sq. ft. first floor

186 sq. ft. unfinished second floor



WYOMING I

WYOMING III

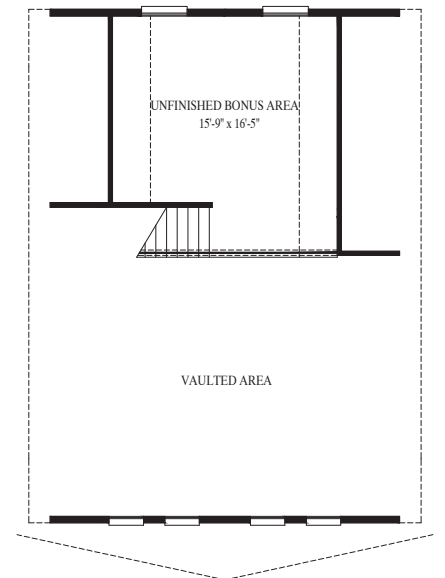
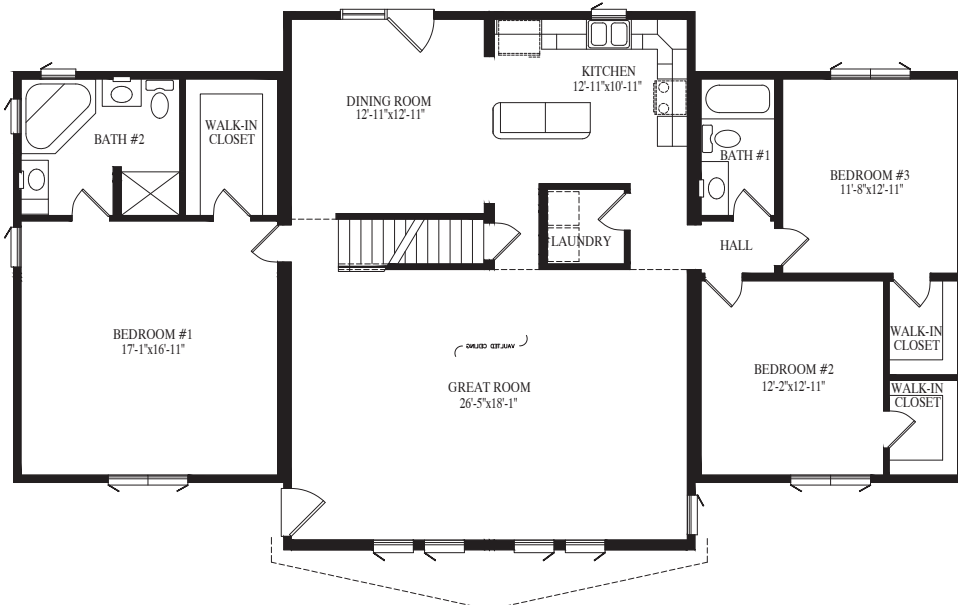


Wyoming III

32' x 63' 8"

1985 sq. ft. first floor

198 sq. ft. unfinished second floor



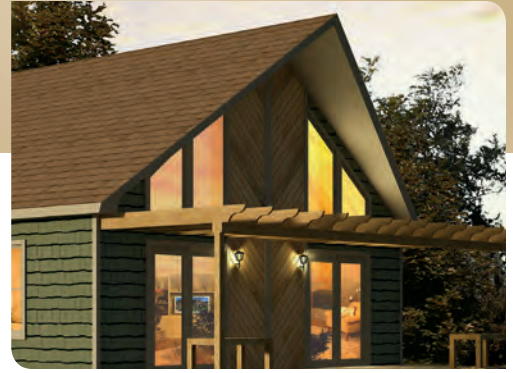
Popular Exterior Options...



7/12 Cathedral Ceiling with Trapezoid Windows



7/12 Vaulted Ceilings with Trapezoid Windows



9/12 Vaulted Ceiling with Trapezoid Windows and Sliding Glass Doors



9/12 Vaulted Ceiling with Custom Trapezoid Windows



12/12 Vaulted Ceiling with Trapezoid Windows over Windows



12/12 Vaulted Ceiling with Trapezoid Windows over Sliding Glass Doors



12/12 Vaulted Ceiling with Trapezoid Windows over Windows with Chimney



36" High Sloped Railing



36" High Sloped Wall

Great Homes Start With Quality Products...



NOTE: All renderings are artist's concepts only and may vary from actual home.



Supreme Modular
www.suprememodular.com
856-652-2382

Supreme Modular
3040 White Horse Pike
Hammonton, NJ 08037
www.suprememodular.com

Supreme Modular
3040 White Horse Pike
Hammonton, NJ 08037
www.suprememodular.com
856-652-2382

